



HomeLife Property Rentals

Suite #1, 1920 152 Street
Surrey, BC V4A 4N6

Office: 604-531-1111
propertymanagement@teamhl.com
www.HomeLifePropertyRentals.ca

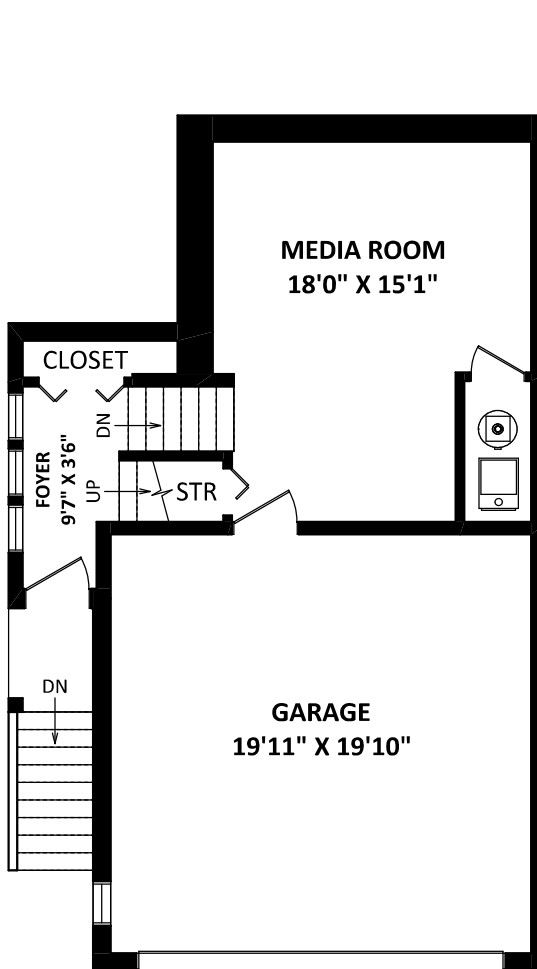
15151 34th Avenue,

Surrey, BC

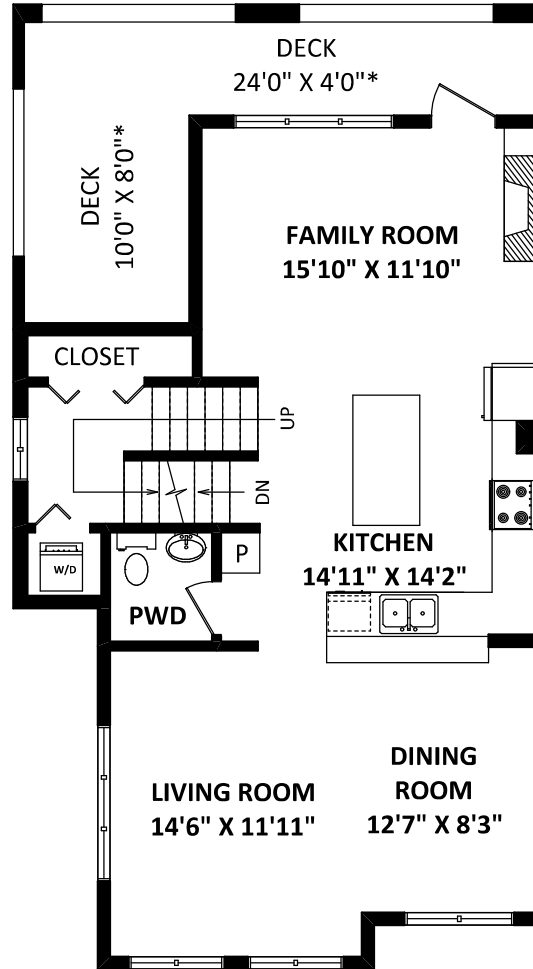
TOTAL FINISHED AREA: 2041 SQ.FT.

OTHER AREA(S)

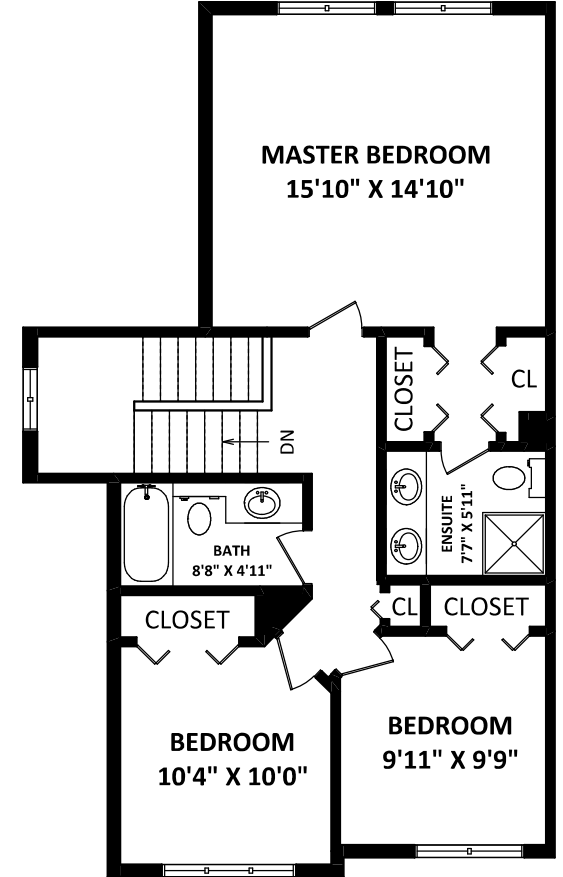
GARAGE: 418 SQ.FT.
DECKS: 200 SQ.FT.*



LOWER FLOOR: 407 SQ.FT.



MAIN FLOOR: 823 SQ.FT.



UPPER FLOOR: 809 SQ.FT.

FLOOR PLAN BY:

[JULY 4, 2020]



TEL: 604-575-1244

www.seevirtual360.com

DISCLAIMERS:

1. MEASUREMENTS ARE FOR PROMOTIONAL USE ONLY & ARE NOT INTENDED FOR CONSTRUCTION USE. ROOM DIMENSIONS ARE APPROXIMATE. MEASUREMENTS & CALCULATIONS FOR FINISHED AREAS ARE E&O INSURED.
 2. FINISHED AREAS ARE ENCLOSED AREAS IN A HOUSE THAT ARE SUITABLE FOR YEAR-ROUND USE, EMBODYING WALLS, FLOORS, AND CEILINGS THAT ARE SIMILAR TO THE REST OF THE HOUSE. (ANSI Z765-2013)
 3. THIS FLOOR PLAN MAY ONLY BE REPRODUCED WITH PERMISSION OF THE REALTOR(S) ON THIS FLOOR PLAN.
- * ANY MEASUREMENT WITH AN ASTERISK (*) OR (APPROX) ARE APPROXIMATE AND FOR ILLUSTRATION PURPOSES ONLY AND ARE NOT E&O INSURED.



SCALE: 0 2 5 10 FT