



KIM TAYLOR

Angell Hasman & Associates Realty

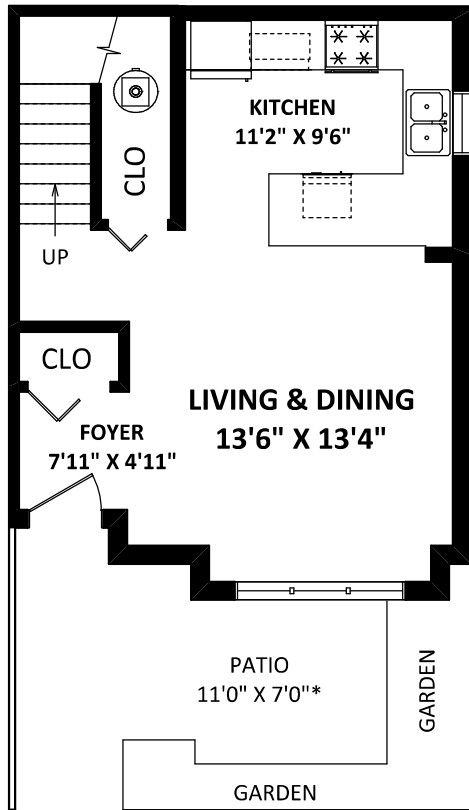
Cell: 604-315-2645
 kim@kimtaylorhomes.com
 www.kimtaylorhomes.com

**2759 Guelph Street,
 Vancouver, BC**

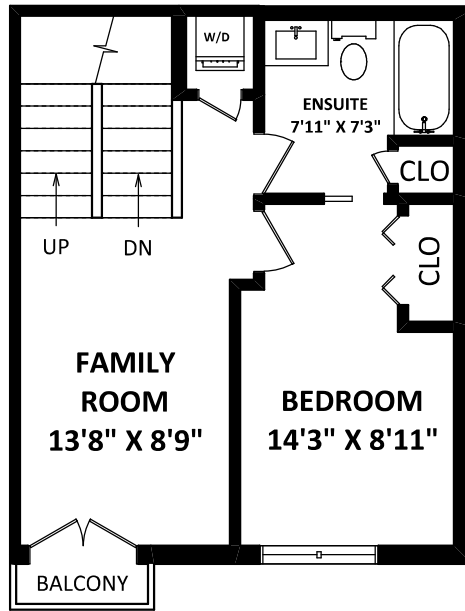
TOTAL FINISHED AREA: 1299 SQ.FT.

OTHER AREA(S)

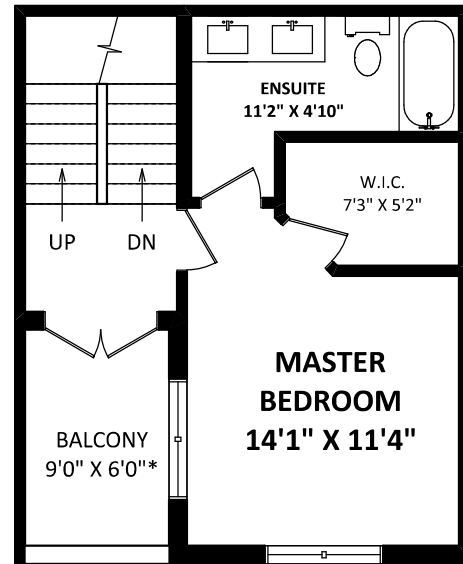
ROOF DECK: 290 SQ.FT.*
 PATIO: 185 SQ.FT.*
 BALCONIES: 70 SQ.FT.*



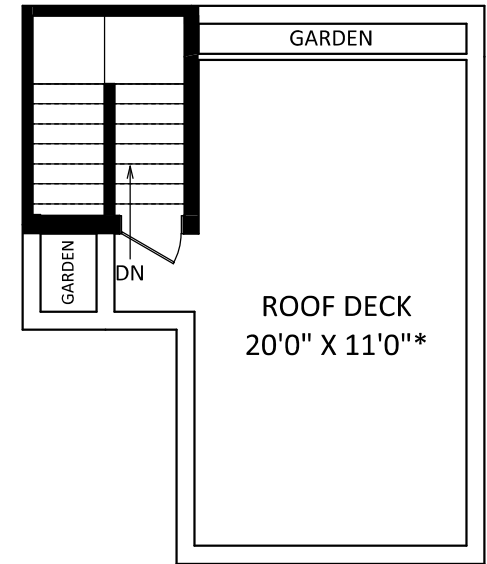
MAIN FLOOR: 437 SQ.FT.



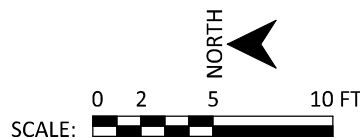
UPPER FLOOR: 432 SQ.FT.



MASTER FLOOR: 366 SQ.FT.



**TOP FLOOR: 64 SQ.FT.
 ROOF DECK: 290 SQ.FT.***



DISCLAIMERS:

1. MEASUREMENTS ARE FOR PROMOTIONAL USE ONLY & ARE NOT INTENDED FOR CONSTRUCTION USE. ROOM DIMENSIONS ARE APPROXIMATE. MEASUREMENTS & CALCULATIONS FOR FINISHED AREAS ARE E&O INSURED.
 2. FINISHED AREAS ARE ENCLOSED AREAS IN A HOUSE THAT ARE SUITABLE FOR YEAR-ROUND USE, EMBODYING WALLS, FLOORS, AND CEILINGS THAT ARE SIMILAR TO THE REST OF THE HOUSE. (ANSI Z765-2013)
 3. THIS FLOOR PLAN MAY ONLY BE REPRODUCED WITH PERMISSION OF THE REALTOR(S) ON THIS FLOOR PLAN.
- * ANY MEASUREMENT WITH AN ASTERISK (*) OR (APPROX) ARE APPROXIMATE AND FOR ILLUSTRATION PURPOSES ONLY AND ARE NOT E&O INSURED.

FLOOR PLAN BY:

[JULY 2, 2020]



TEL: 604-575-1244
 www.seevirtual360.com