

JILL WIERSMA



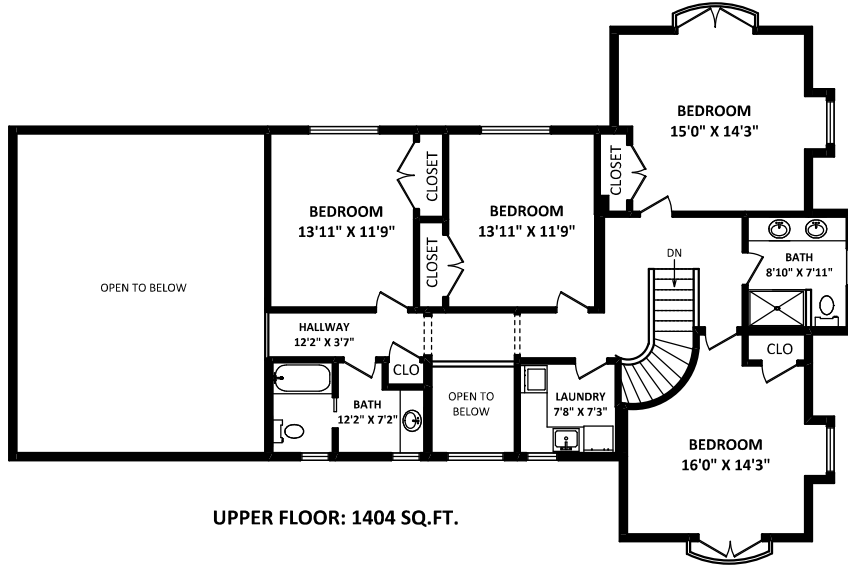
RE/MAX Masters Realty

Cell: 604-341-1411

jillw@telus.net

www.laurenandjill.com

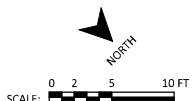
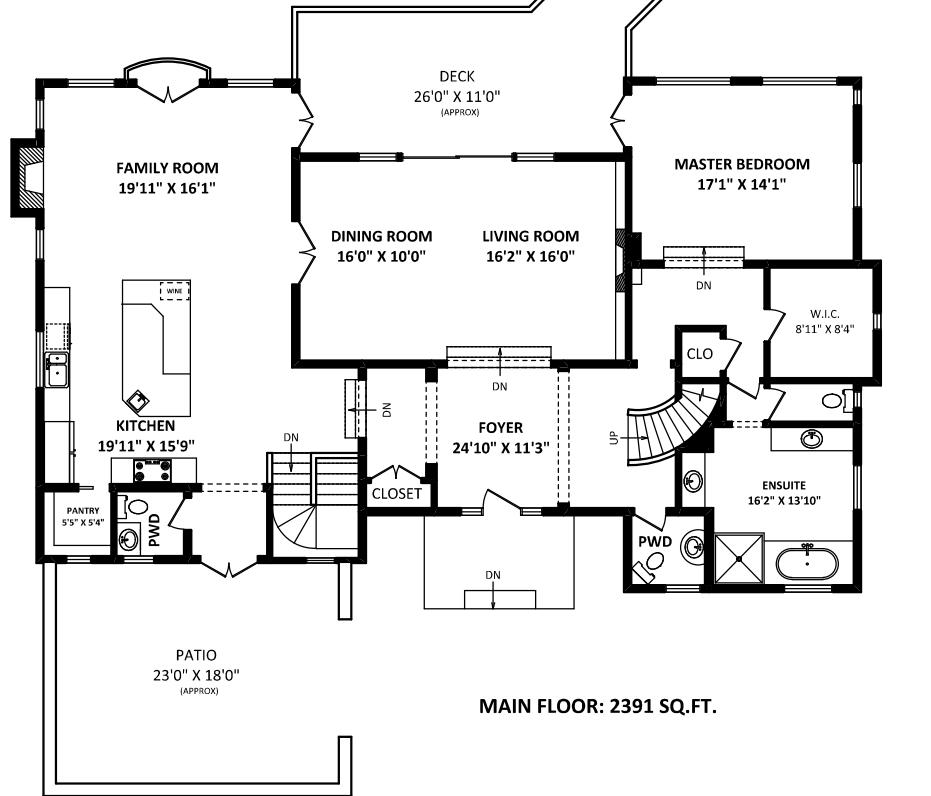
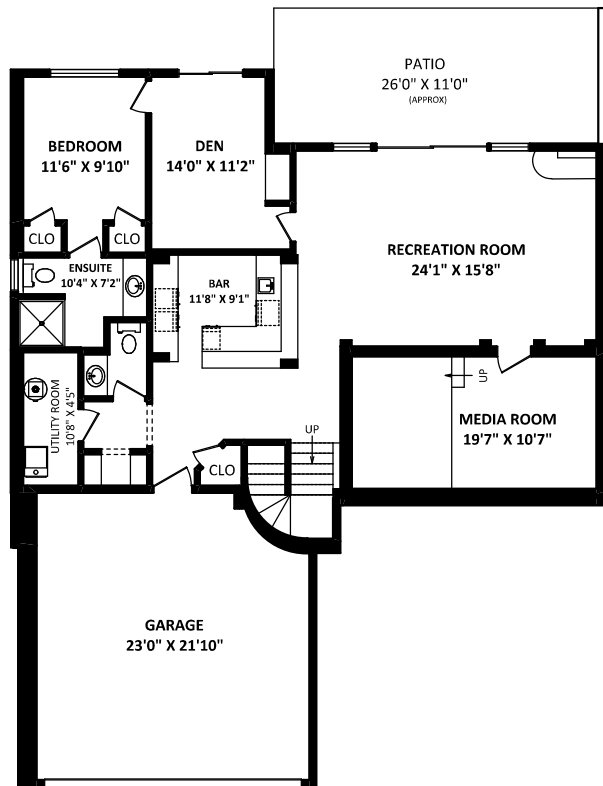
3914 Southridge Avenue,
West Vancouver, BC



TOTAL FINISHED AREA: 5308 SQ.FT.

OTHER AREA(S)

GARAGE: 541 SQ.FT.
DECK: 355 SQ.FT.*
PATIOS: 1130 SQ.FT.*



DISCLAIMERS:
1. MEASUREMENTS ARE FOR PROMOTIONAL USE ONLY & ARE NOT INTENDED FOR CONSTRUCTION USE. ROOM DIMENSIONS ARE APPROXIMATE. MEASUREMENTS & CALCULATIONS FOR FINISHED AREAS ARE E&O INSURED.
2. FINISHED AREAS ARE ENCLOSED AREAS IN A HOUSE THAT ARE SUITABLE FOR YEAR-ROUND USE.
3. THIS FLOOR PLAN MAY ONLY BE REPRODUCED WITH PERMISSION OF THE REALTOR(S) ON THIS FLOOR PLAN.
4. ANY MEASUREMENT WITH AN ASTERISK (*) OR (APPROX) ARE APPROXIMATE AND FOR ILLUSTRATION PURPOSES ONLY AND ARE NOT E&O INSURED.

FLOOR PLAN BY:
[JUNE 26, 2020]
SEE VIRTUAL
TEL: 604-575-1244
www.seevirtual360.com