

**46121 Clare Avenue,**  
Chilliwack, BC

**Mark Andersen's Home Masters Team**

RE/MAX  
Nyda Realty  
1-7300 Vedder Rd  
Chilliwack BC V5R 4G6  
604-858-7179

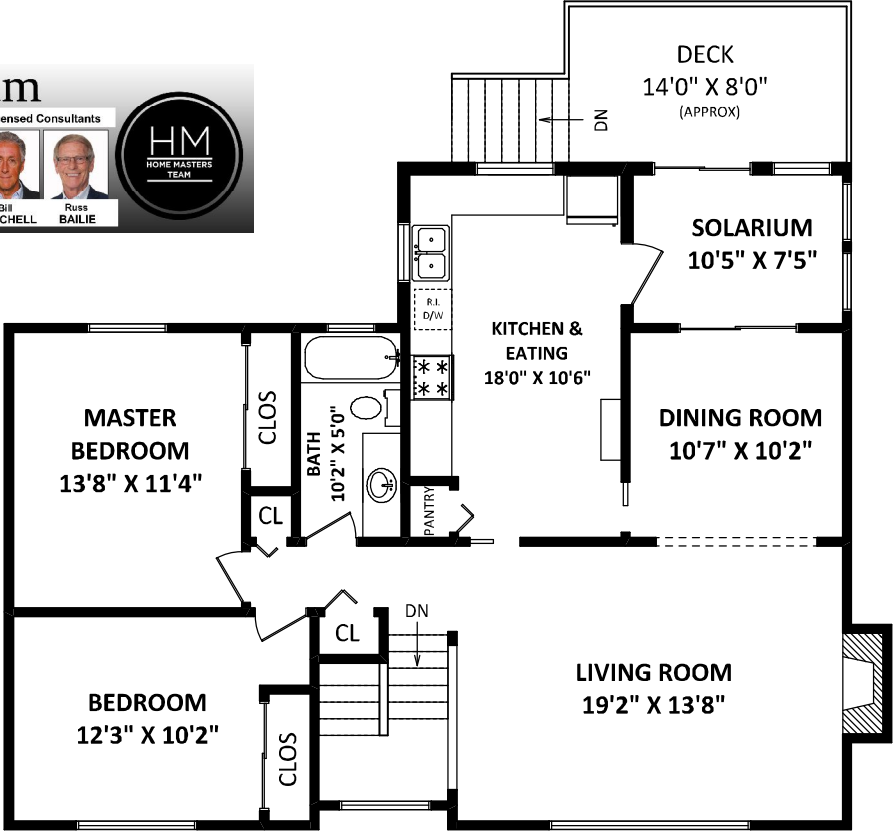
Unlicensed Consultants

Mark ANDERSEN, Janette JOINER, Wendy MILLER, Sophie GRENIER-PORCHER, Bill MITCHELL, Russ BAILIE

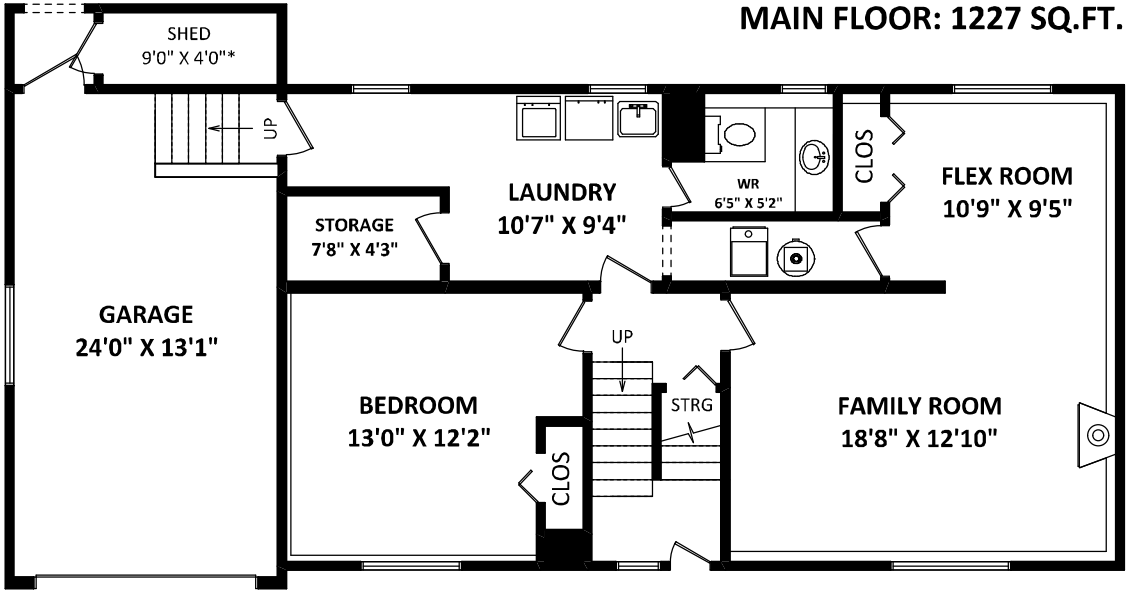
**TOTAL FINISHED AREA: 2239 SQ.FT.**

**OTHER AREA(S)**

GARAGE:	338 SQ.FT.
DECK:	115 SQ.FT.*
SHED:	40 SQ.FT.*



**MAIN FLOOR: 1227 SQ.FT.**



**LOWER FLOOR: 1012 SQ.FT.**

DISCLAIMERS:  
 1. MEASUREMENTS ARE FOR PROMOTIONAL USE ONLY & ARE NOT INTENDED FOR CONSTRUCTION USE. ROOM DIMENSIONS ARE APPROXIMATE. MEASUREMENTS & CALCULATIONS FOR FINISHED AREAS ARE E&O INSURED.  
 2. FINISHED AREAS ARE ENCLOSED AREAS IN A HOUSE THAT ARE SUITABLE FOR YEAR-ROUND USE, EMBODYING WALLS, FLOORS, AND CEILINGS THAT ARE SIMILAR TO THE REST OF THE HOUSE. (ANSI Z765-2013)  
 3. THIS FLOOR PLAN MAY ONLY BE REPRODUCED WITH PERMISSION OF THE REALTOR(S) ON THIS FLOOR PLAN.  
 \* ANY MEASUREMENT WITH AN ASTERISK (\*) OR [APPROX] ARE APPROXIMATE AND FOR ILLUSTRATION PURPOSES ONLY AND ARE NOT E&O INSURED.

FLOOR PLAN BY:  
 [JUNE 10, 2020]  
  
 TEL: 604-575-1244  
 www.seevirtual360.com

