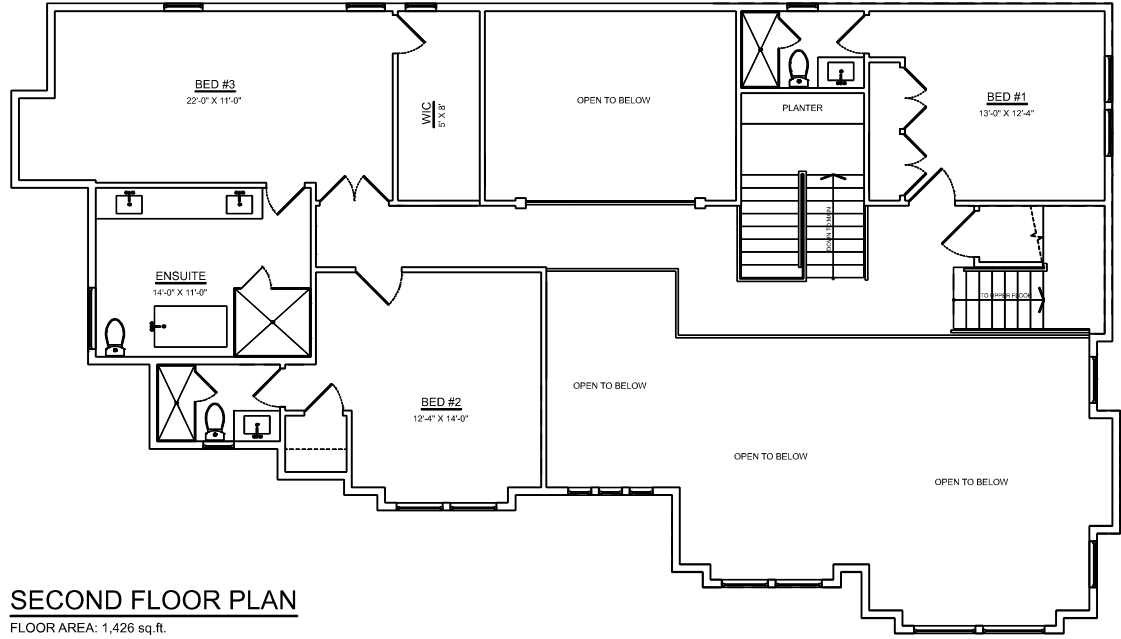
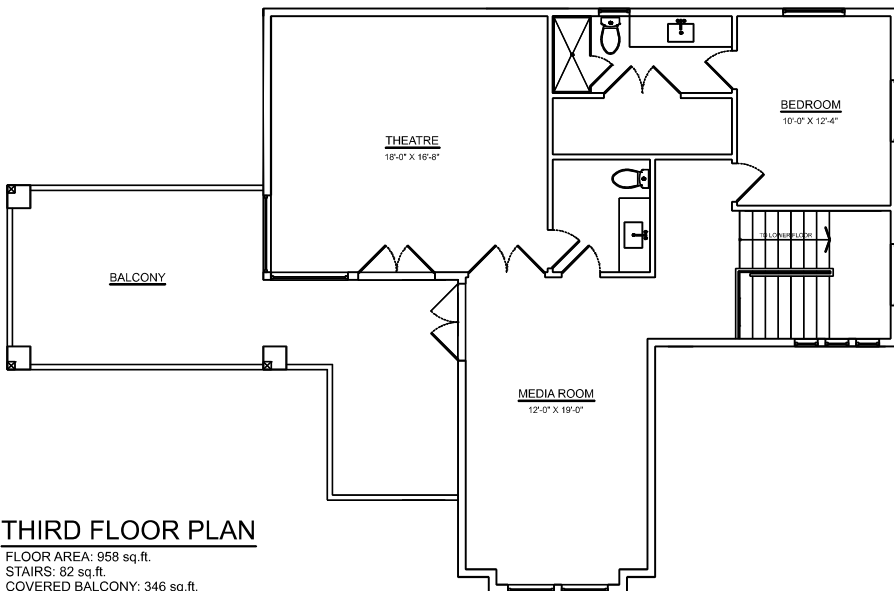
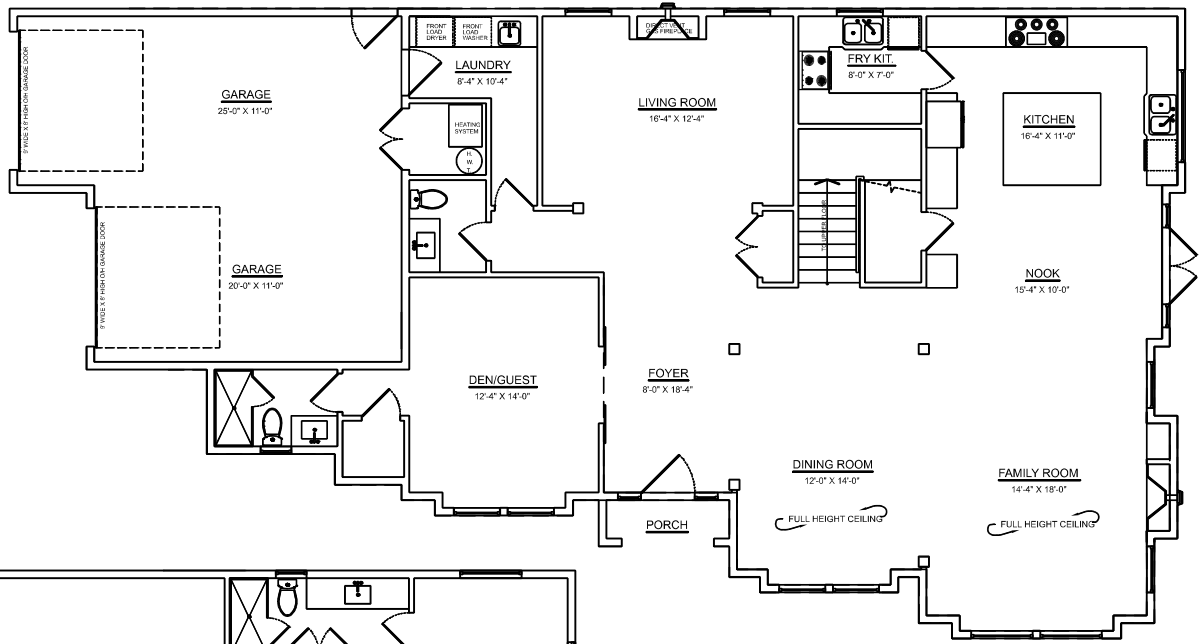


11540 Pelican Court,
Richmond, BC



TOTAL FLOOR AREA: 4384 SQ.FT.
FLOOR AREA: 4302 SQ.FT.
STAIRS: 82 SQ.FT.

OTHER AREA(S)
GARAGE: 535 SQ.FT.
COVERED BALCONY: 346 SQ.FT.
PORCH: 25 SQ.FT.



SCALE: 0 2 5 10 FT.



DISCLAIMERS:
 1. MEASUREMENTS ARE FOR PROMOTIONAL USE ONLY & ARE NOT INTENDED FOR CONSTRUCTION USE. ROOM DIMENSIONS ARE APPROXIMATE. FLOOR PLAN IS DRAWN FROM CONSTRUCTION DRAWING. MEASUREMENTS AND SQFT ARE TAKEN FROM CONSTRUCTION DRAWING AND ARE NOT E&O INSURED.
 2. THIS FLOOR PLAN MAY ONLY BE REPRODUCED WITH PERMISSION OF THE REALTOR(S) ON THIS FLOOR PLAN.

FLOOR PLAN BY: **SEEVIRTUAL**
 [MAY 25, 2020]
 TEL: 604-575-1244
 www.seevirtual360.com