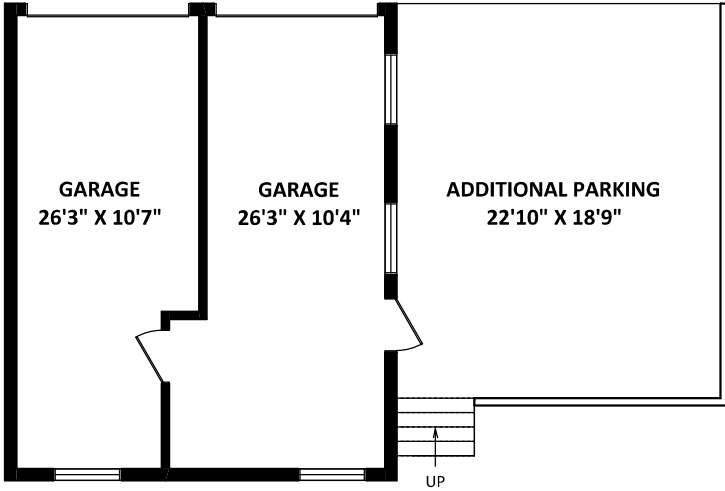


**GREGORY HEYES**  
Personal Real Estate Corporation

**GREGORYHEYES**  
PERSONAL REAL ESTATE CORPORATION

**RE/MAX Crest Realty**  
North Vancouver  
Cell: 604-720-8107  
Office: 604-988-8000  
greg@gregheyes.com  
www.gregheyes.com

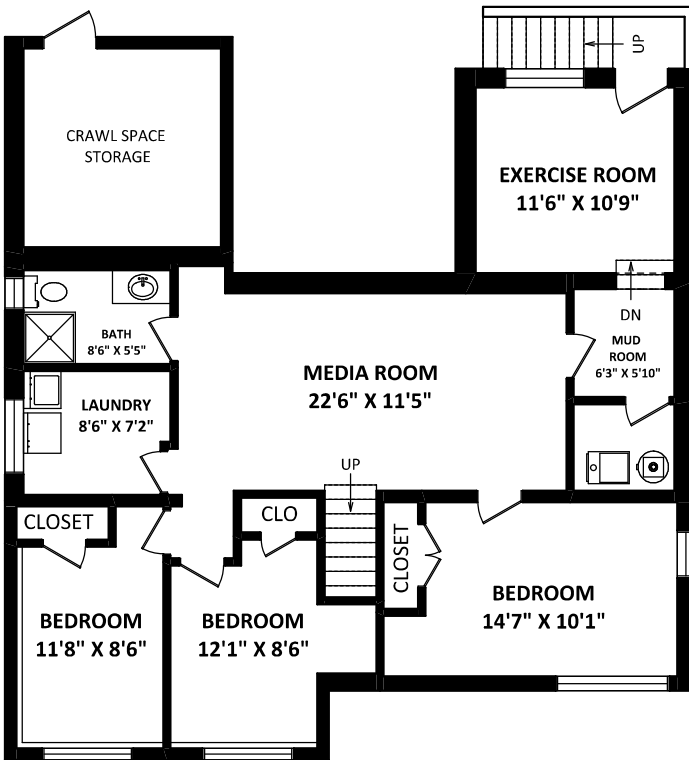
**250 26th E Street,**  
North Vancouver, BC



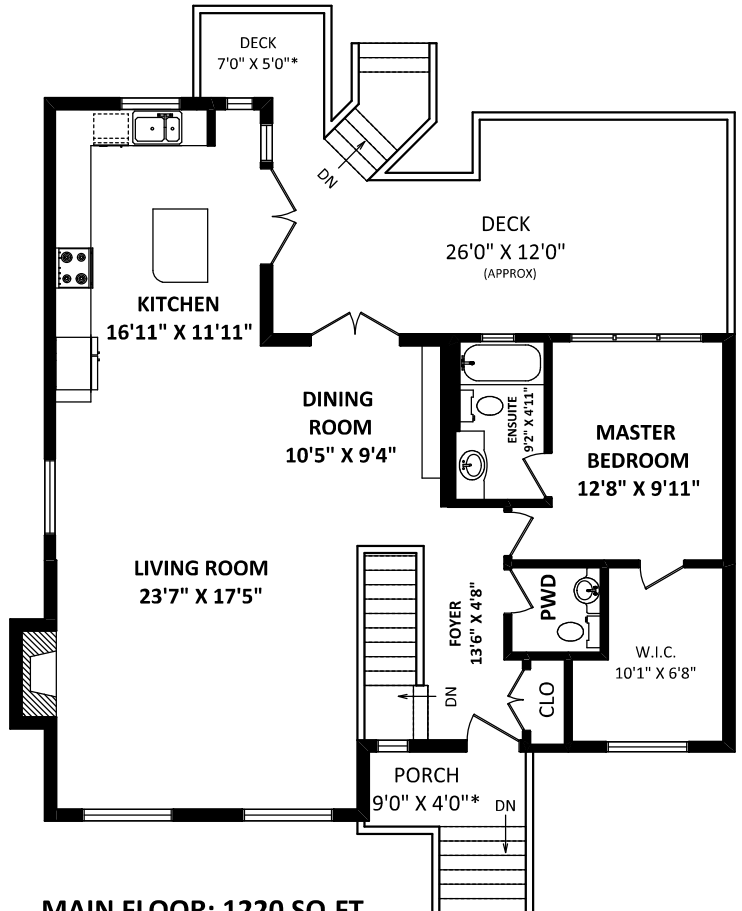
**TOTAL FINISHED AREA: 2443 SQ.FT.**

*OTHER AREA(S)*

GARAGE:	625 SQ.FT.
ADDITIONAL PARKING:	445 SQ.FT.
DECKS:	360 SQ.FT.*
PORCH:	45 SQ.FT.*
CRAWL SPACE:	160 SQ.FT.*



**LOWER FLOOR: 1223 SQ.FT.**



**MAIN FLOOR: 1220 SQ.FT.**

FLOOR PLAN BY:  
[MAY 19, 2020]  
**SEEVIRTUAL**  
REALTY INC. & PHOTOGRAPHY  
TEL: 604-575-1244  
www.seevirtual360.com

DISCLAIMERS:  
1. MEASUREMENTS ARE FOR PROMOTIONAL USE ONLY & ARE NOT INTENDED FOR CONSTRUCTION USE. ROOM DIMENSIONS ARE APPROXIMATE. MEASUREMENTS & CALCULATIONS FOR FINISHED AREAS ARE E&O INSURED.  
2. FINISHED AREAS ARE ENCLOSED AREAS IN A HOUSE THAT ARE SUITABLE FOR YEAR-ROUND USE. EMBODDYING WALLS, FLOORS, AND CEILINGS THAT ARE SIMILAR TO THE REST OF THE HOUSE. (ANSI Z765-2013)  
3. THIS FLOOR PLAN MAY ONLY BE REPRODUCED WITH PERMISSION OF THE REALTOR(S) ON THIS FLOOR PLAN.  
\* ANY MEASUREMENT WITH AN ASTERISK (\*) OR (APPROX) ARE APPROXIMATE AND FOR ILLUSTRATION PURPOSES ONLY AND ARE NOT E&O INSURED.

