

JILL WIERSMA

160 W 12th Street,  
North Vancouver, BC



RE/MAX Masters Realty

Cell: 604-341-1411

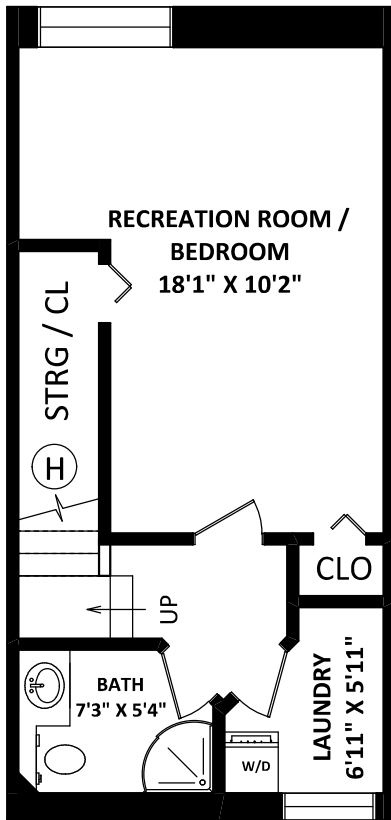
jillw@telus.net

www.laurenandjill.com

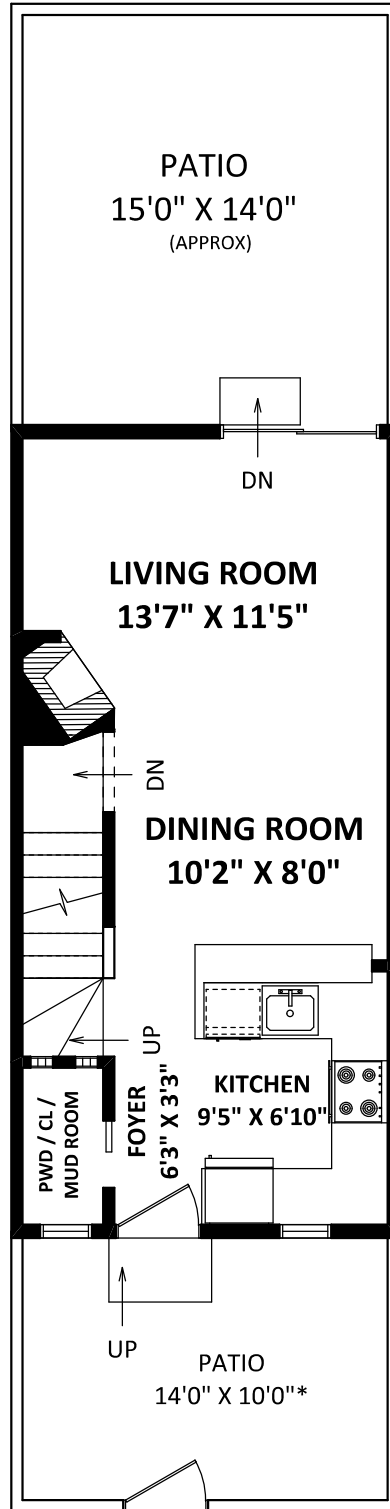
**TOTAL FINISHED AREA: 1326 SQ.FT.**

OTHER AREA(S)

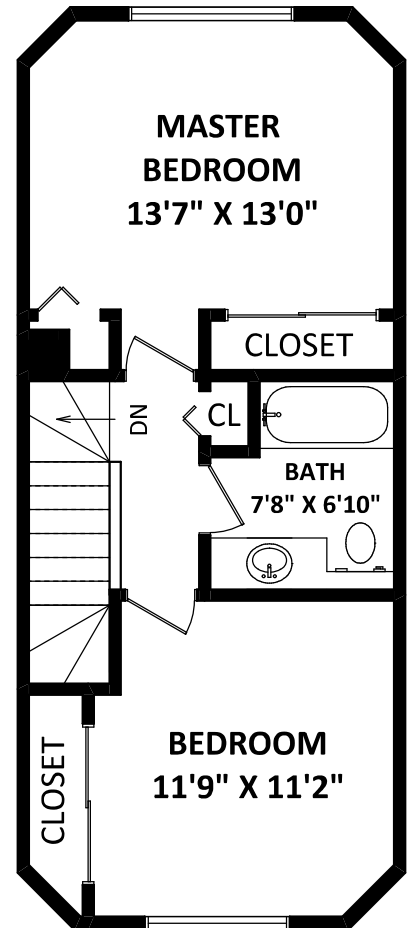
PATIOS: 356 SQ.FT.\*



**LOWER FLOOR:  
418 SQ.FT.**



**MAIN FLOOR:  
429 SQ.FT.**



**UPPER FLOOR:  
479 SQ.FT.**

DISCLAIMER:

- 1. MEASUREMENTS ARE FOR PROMOTIONAL USE ONLY & ARE NOT INTENDED FOR CONSTRUCTION USE. ROOM DIMENSIONS ARE APPROXIMATE. MEASUREMENTS & CALCULATIONS FOR FINISHED AREAS ARE E&O INSURED.
  - 2. FINISHED AREAS ARE ENCLOSED AREAS IN A HOUSE THAT ARE SUITABLE FOR YEAR-ROUND USE, EMBODYING WALLS, FLOORS, AND CEILINGS THAT ARE SIMILAR TO THE REST OF THE HOUSE. (ANSI Z765-2013)
  - 3. THIS FLOOR PLAN MAY ONLY BE REPRODUCED WITH PERMISSION OF THE REALTOR(S) ON THIS FLOOR PLAN.
- \* ANY MEASUREMENT WITH AN ASTERISK (\*) OR (APPROX) ARE APPROXIMATE AND FOR ILLUSTRATION PURPOSES ONLY AND ARE NOT E&O INSURED.

FLOOR PLAN BY:

[FEBRUARY 24,2020]



TEL: 604-575-1244

www.seevirtual360.com



0 2 5 10 FT

SCALE:

