

766 Orwell Street,
North Vancouver, BC



LIANA YAP

Sutton Group West Coast

Cell: 604-714-1700

Office: 604-729-2126

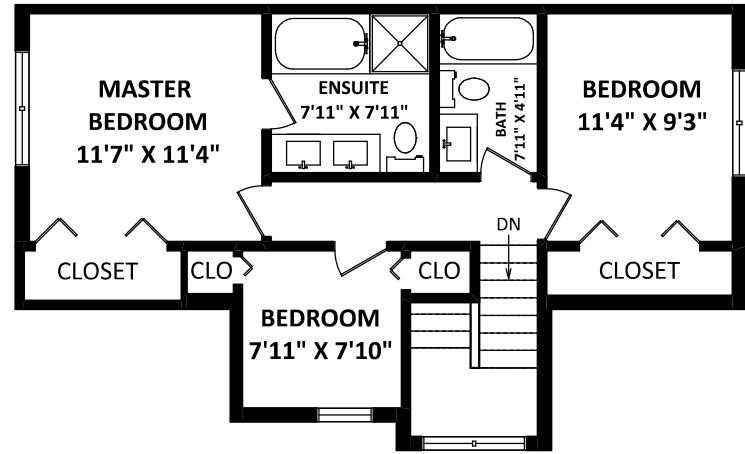
liana@lianashowcase.com

www.lianashowcase.com

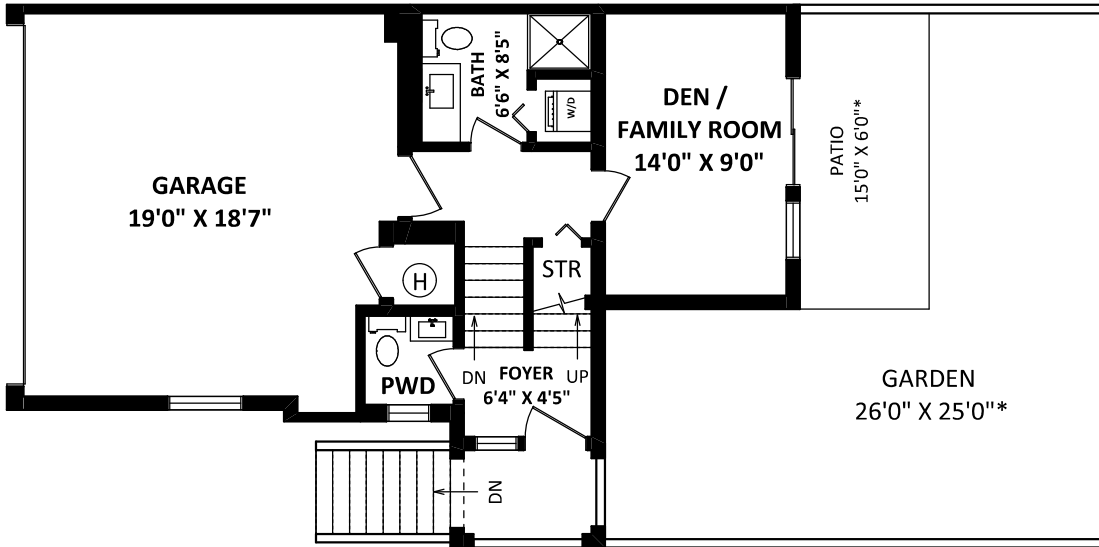
TOTAL FINISHED AREA: 1622 SQ.FT.

OTHER AREA(S)

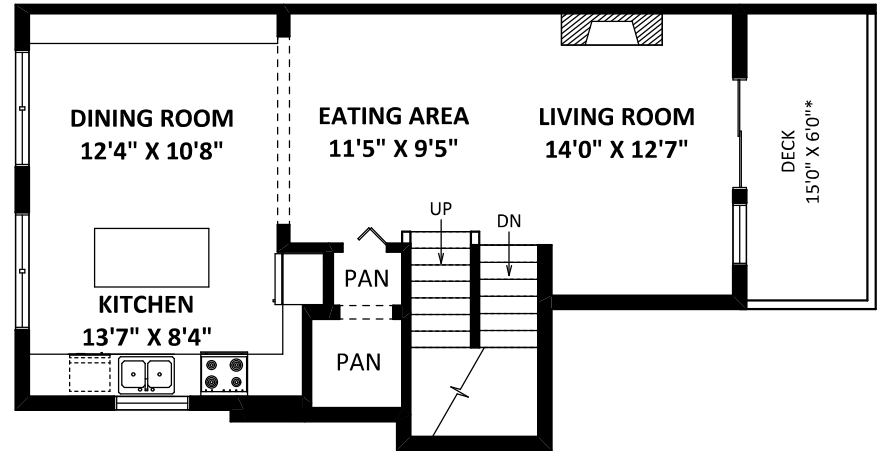
GARAGE:	593 SQ.FT.
DECK:	376 SQ.FT.*
PATIO:	97 SQ.FT.*
GARDEN :	420 SQ.FT.*



UPPER FLOOR: 593 SQ.FT.



LOWER FLOOR: 356 SQ.FT.



MAIN FLOOR: 673 SQ.FT.

DISCLAIMER:

1. MEASUREMENTS ARE FOR PROMOTIONAL USE ONLY & ARE NOT INTENDED FOR CONSTRUCTION USE. ROOM DIMENSIONS ARE APPROXIMATE. MEASUREMENTS & CALCULATIONS FOR FINISHED AREAS ARE E&O INSURED.
 2. FINISHED AREAS ARE ENCLOSED AREAS IN A HOUSE THAT ARE SUITABLE FOR YEAR-ROUND USE, EMBODYING WALLS, FLOORS, AND CEILINGS THAT ARE SIMILAR TO THE REST OF THE HOUSE. (ANSI Z765-2013)
 3. THIS FLOOR PLAN MAY ONLY BE REPRODUCED WITH PERMISSION OF THE REALTOR(S) ON THIS FLOOR PLAN.
- * ANY MEASUREMENT WITH AN ASTERISK (*) OR (APPROX) ARE APPROXIMATE AND FOR ILLUSTRATION PURPOSES ONLY AND ARE NOT E&O INSURED.

