

# 2272 Bevan Crescent, Abbotsford, BC



## JOHN CORRIE

RE/MAX Little Oak Realty

Phone: 604-859-2341

Cell: 604-309-0540

john@johncorrie.com

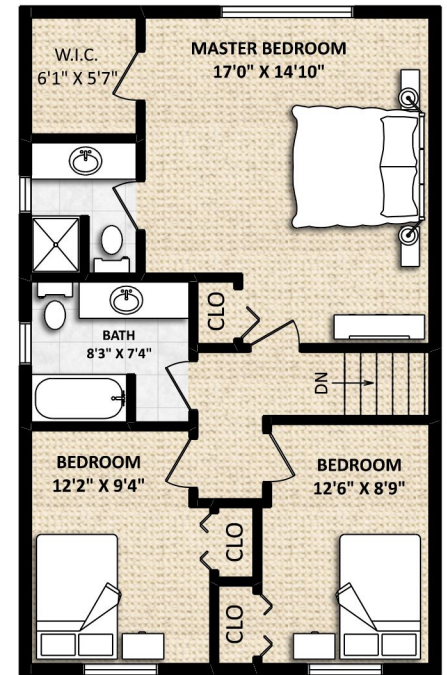
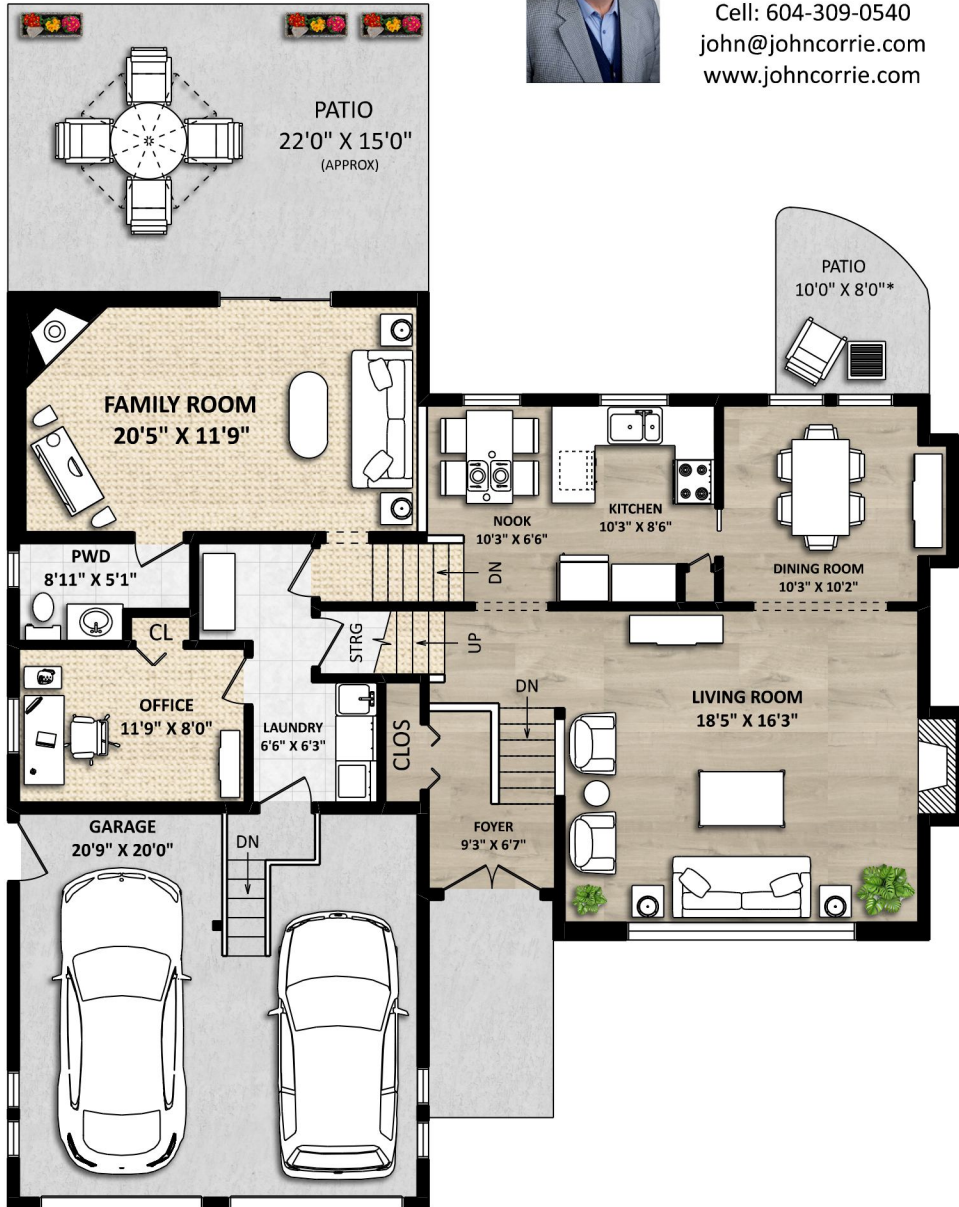
www.johncorrie.com

**TOTAL FINISHED AREA: 2100 SQ.FT.**

OTHER AREA(S)

GARAGE: 449 SQ.FT.

PATIOS: 395 SQ.FT.\*



**UPPER FLOOR: 763 SQ.FT.**

**MAIN FLOOR: 769 SQ.FT.**  
**LOWER FLOOR: 568 SQ.FT.**

SCALE: 0 2 5 10 FT.



### DISCLAIMER:

1. MEASUREMENTS ARE FOR PROMOTIONAL USE ONLY & ARE NOT INTENDED FOR CONSTRUCTION USE. ROOM DIMENSIONS ARE APPROXIMATE. MEASUREMENTS & CALCULATIONS FOR FINISHED AREAS ARE E&O INSURED.
  2. FINISHED AREAS ARE ENCLOSED AREAS IN A HOUSE THAT ARE SUITABLE FOR YEAR-ROUND USE, EMBODYING WALLS, FLOORS, AND CEILINGS THAT ARE SIMILAR TO THE REST OF THE HOUSE. (ANSI Z765-2013)
  3. THIS FLOOR PLAN MAY ONLY BE REPRODUCED WITH PERMISSION OF THE REALTOR(S) ON THIS FLOOR PLAN.
- \* ANY MEASUREMENT WITH AN ASTERISK (\*) OR (APPROX) ARE APPROXIMATE AND FOR ILLUSTRATION PURPOSES ONLY AND ARE NOT E&O INSURED.

FLOOR PLAN BY: [SEPTEMBER 10, 2019]  
**SEEVIRTUAL**  
TEL: 604-575-1244  
www.seevirtual360.com