

#416 2368 Marpole Avenue, Port Coquitlam, BC



TINA MAK

Personal Real Estate Corporation

Coldwell Banker Westburn Realty

Cell: 604-412-5860

Office: 604-437-1123

tinamak@tinamak.com

www.tinamak.com

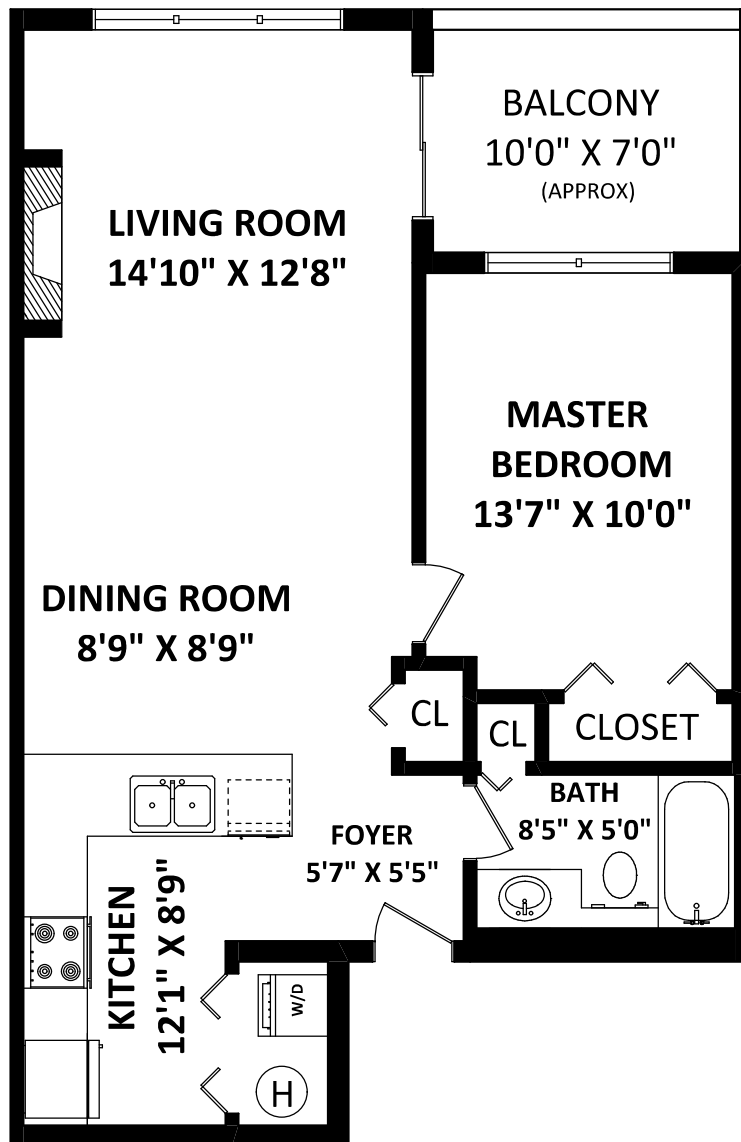


TOTAL FINISHED AREA: 712 SQ.FT.

OTHER AREA(S)

BALCONY:

77 SQ.FT.*



SCALE: 0 2 5 10 FT



FLOOR PLAN BY:

[JULY 19, 2019]



TEL: 604-575-1244
www.seevirtual360.com

DISCLAIMER:

1. MEASUREMENTS ARE FOR PROMOTIONAL USE ONLY & ARE NOT INTENDED FOR CONSTRUCTION USE. ROOM DIMENSIONS ARE APPROXIMATE. MEASUREMENTS & CALCULATIONS FOR FINISHED AREAS ARE E&O INSURED.
 2. FINISHED AREAS ARE ENCLOSED AREAS IN A HOUSE THAT ARE SUITABLE FOR YEAR-ROUND USE, EMBODYING WALLS, FLOORS, AND CEILINGS THAT ARE SIMILAR TO THE REST OF THE HOUSE. (ANSI Z765-2013)
 3. THIS FLOOR PLAN MAY ONLY BE REPRODUCED WITH PERMISSION OF THE REALTOR(S) ON THIS FLOOR PLAN.
- * ANY MEASUREMENT WITH AN ASTERISK (*) OR (APPROX) ARE APPROXIMATE AND FOR ILLUSTRATION PURPOSES ONLY AND ARE NOT E&O INSURED.