

**TOTAL FINISHED AREA: 3539 SQ.FT.**



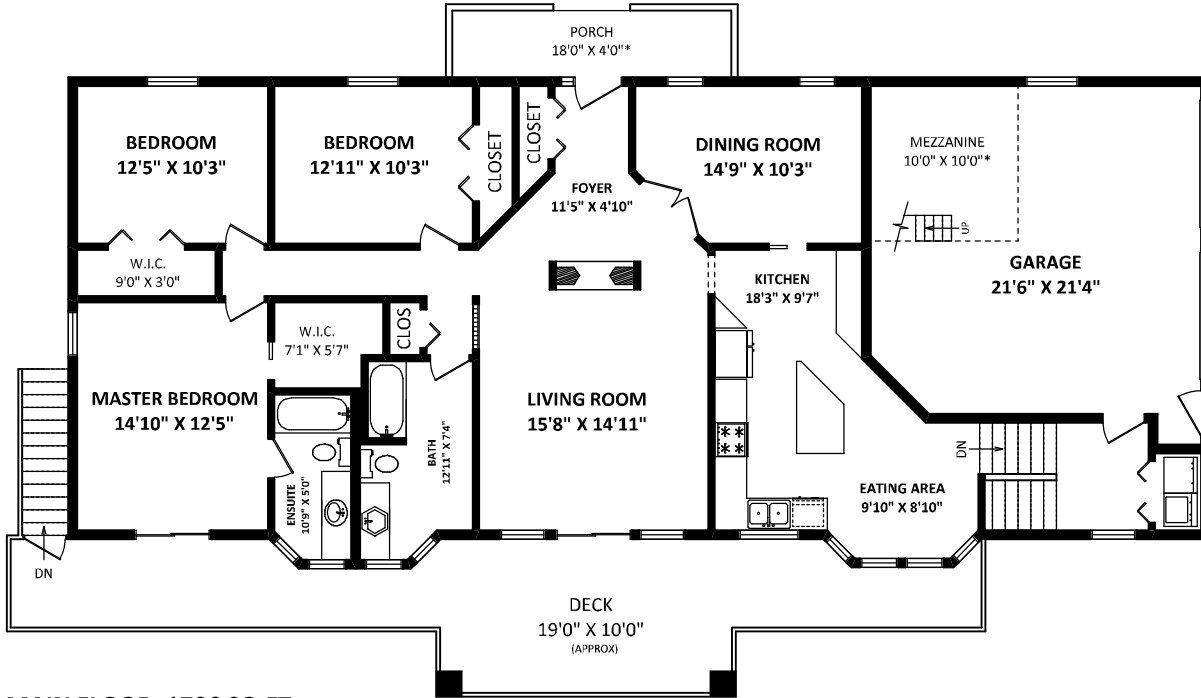
**STEVE CRONER**

*eXp Real Estate*  
 Cell: 604-803-8429  
 steve@nowlisted.ca  
 www.nowlisted.ca

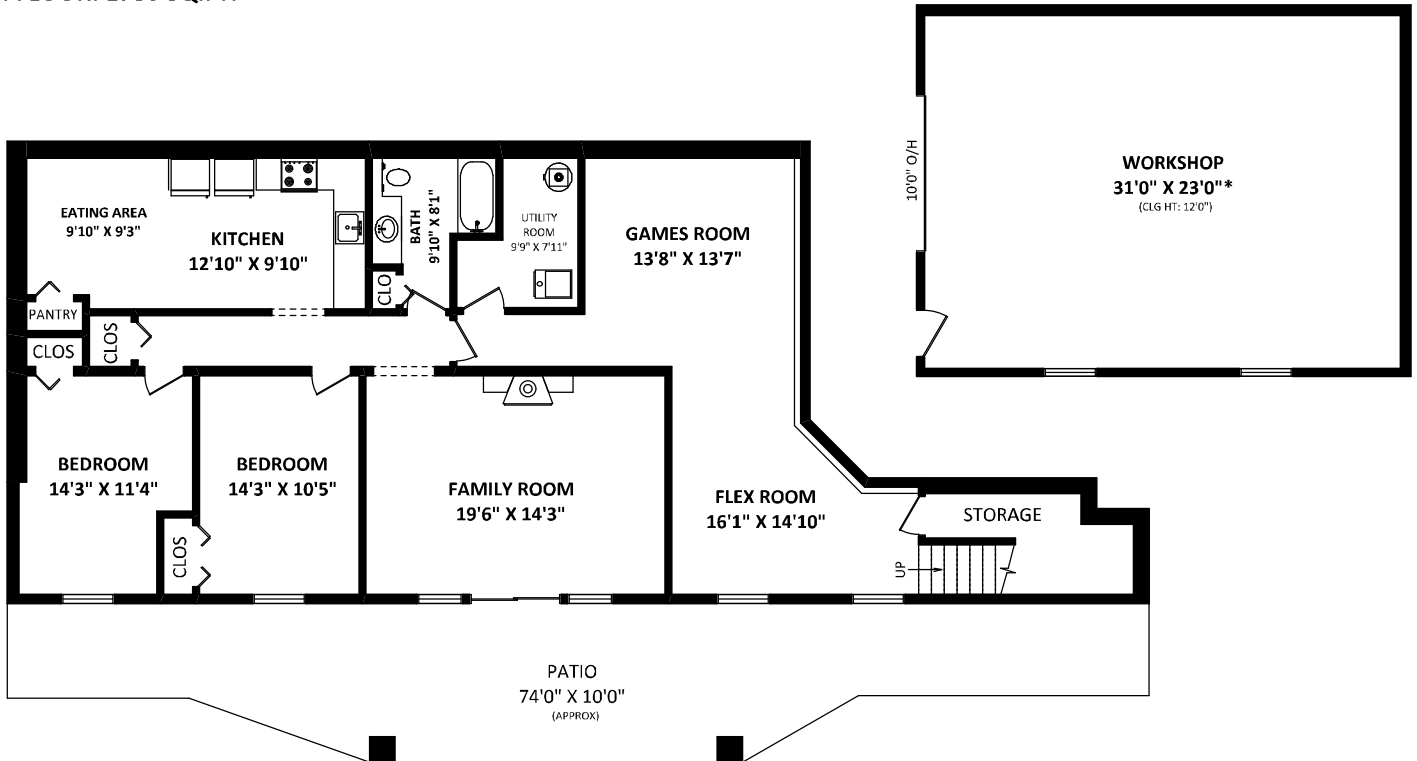
**7341 Marble Hill Road,**  
 Chilliwack, BC

*OTHER AREA(S)*

GARAGE: 484 SQ.FT.  
 DECK: 432 SQ.FT.\*  
 PORCH: 90 SQ.FT.\*  
 PATIO: 600 SQ.FT.\*  
 WORKSHOP: 777 SQ.FT.\*



**MAIN FLOOR: 1786 SQ.FT.**



**LOWER FLOOR: 1753 SQ.FT.**



DISCLAIMER:  
 1. MEASUREMENTS ARE FOR PROMOTIONAL USE ONLY & ARE NOT INTENDED FOR CONSTRUCTION USE. ROOM DIMENSIONS ARE APPROXIMATE. MEASUREMENTS & CALCULATIONS FOR FINISHED AREAS ARE E&O INSURED.  
 2. FINISHED AREAS ARE ENCLOSED AREAS IN A HOUSE THAT ARE SUITABLE FOR YEAR-ROUND USE, EMBODYING WALLS, FLOORS, AND CEILINGS THAT ARE SIMILAR TO THE REST OF THE HOUSE. (ANSI Z765-2013)  
 3. THIS FLOOR PLAN MAY ONLY BE REPRODUCED WITH PERMISSION OF THE REALTOR(S) ON THIS FLOOR PLAN.  
 \* ANY MEASUREMENT WITH AN ASTERISK (\*) OR (APPROX) ARE APPROXIMATE AND FOR ILLUSTRATION PURPOSES ONLY AND ARE NOT E&O INSURED.

FLOOR PLAN BY: [JULY 16, 2019]  
  
 TEL: 604-575-1244  
 www.seevirtual360.com