

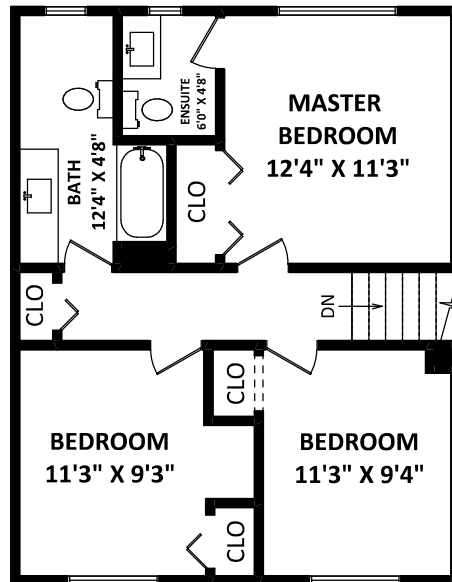


**20306 116 Avenue,**  
**Maple Ridge, BC**

**BOB CHARBONNEAU**

*RE/MAX Sabre Realty*

Cell: 604-340-1747  
 Office: 604-942-0606  
 bob@askbob.ca  
 www.askbob.ca

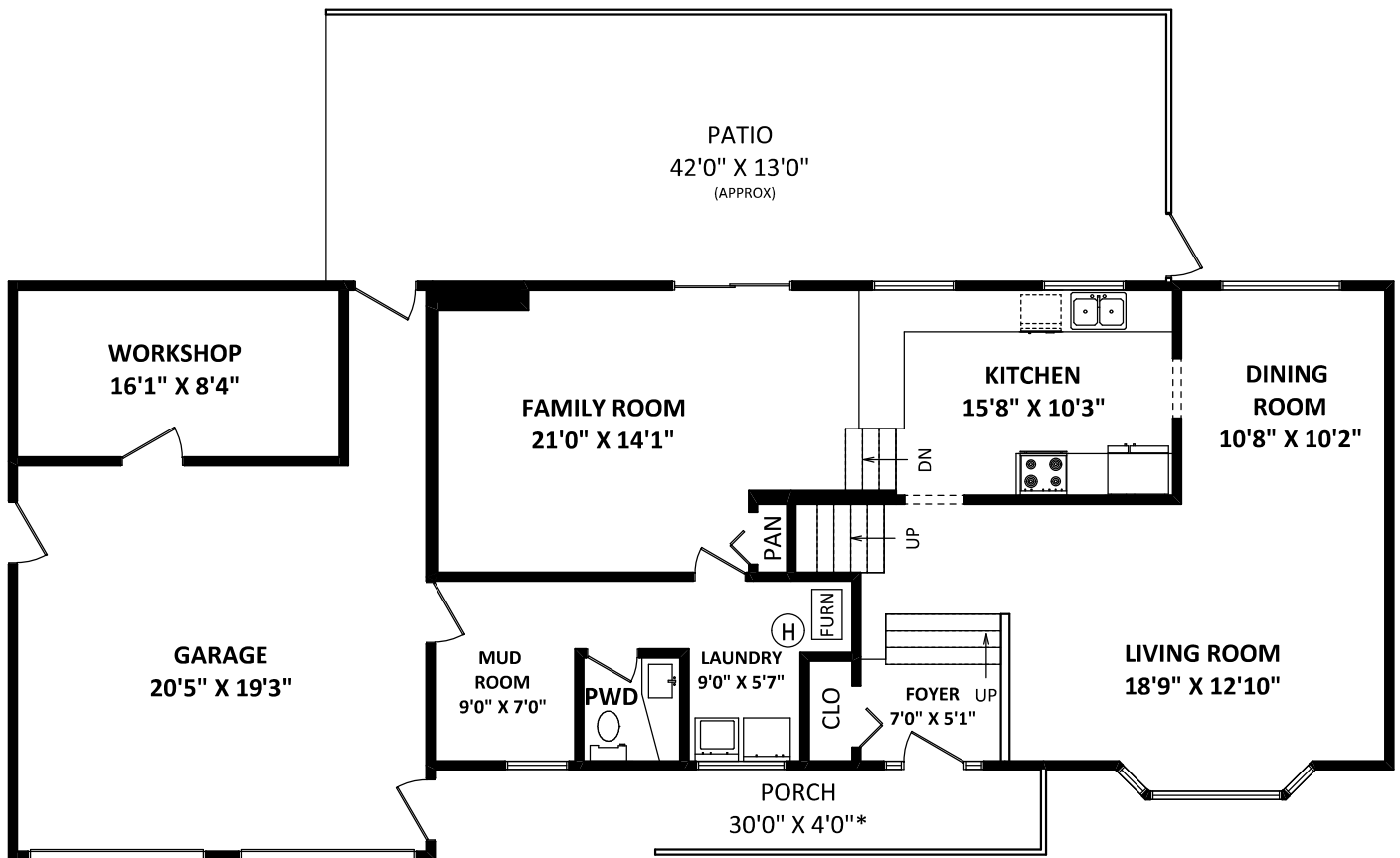


**UPPER FLOOR: 638 SQ.FT.**

**TOTAL FINISHED AREA: 1825 SQ.FT.**

*OTHER AREA(S)*

|           |             |
|-----------|-------------|
| GARAGE:   | 448 SQ.FT.  |
| WORKSHOP: | 155 SQ.FT.  |
| PORCH:    | 130 SQ.FT.* |
| PATIO:    | 573 SQ.FT.* |



**MAIN FLOOR: 1187 SQ.FT.**

**DISCLAIMER:**

1. MEASUREMENTS ARE FOR PROMOTIONAL USE ONLY & ARE NOT INTENDED FOR CONSTRUCTION USE. ROOM DIMENSIONS ARE APPROXIMATE. MEASUREMENTS & CALCULATIONS FOR FINISHED AREAS ARE E&O INSURED.  
 2. FINISHED AREAS ARE ENCLOSED AREAS IN A HOUSE THAT ARE SUITABLE FOR YEAR-ROUND USE, EMBODYING WALLS, FLOORS, AND CEILINGS THAT ARE SIMILAR TO THE REST OF THE HOUSE. (ANSI Z765-2013)  
 3. THIS FLOOR PLAN MAY ONLY BE REPRODUCED WITH PERMISSION OF THE REALTOR(S) ON THIS FLOOR PLAN.  
 \* ANY MEASUREMENT WITH AN ASTERISK (\*) OR (APPROX) ARE APPROXIMATE AND FOR ILLUSTRATION PURPOSES ONLY AND ARE NOT E&O INSURED.

FLOOR PLAN BY: [OCTOBER 1, 2018]  
  
 TEL: 604-575-1244  
 www.seevirtual360.com

