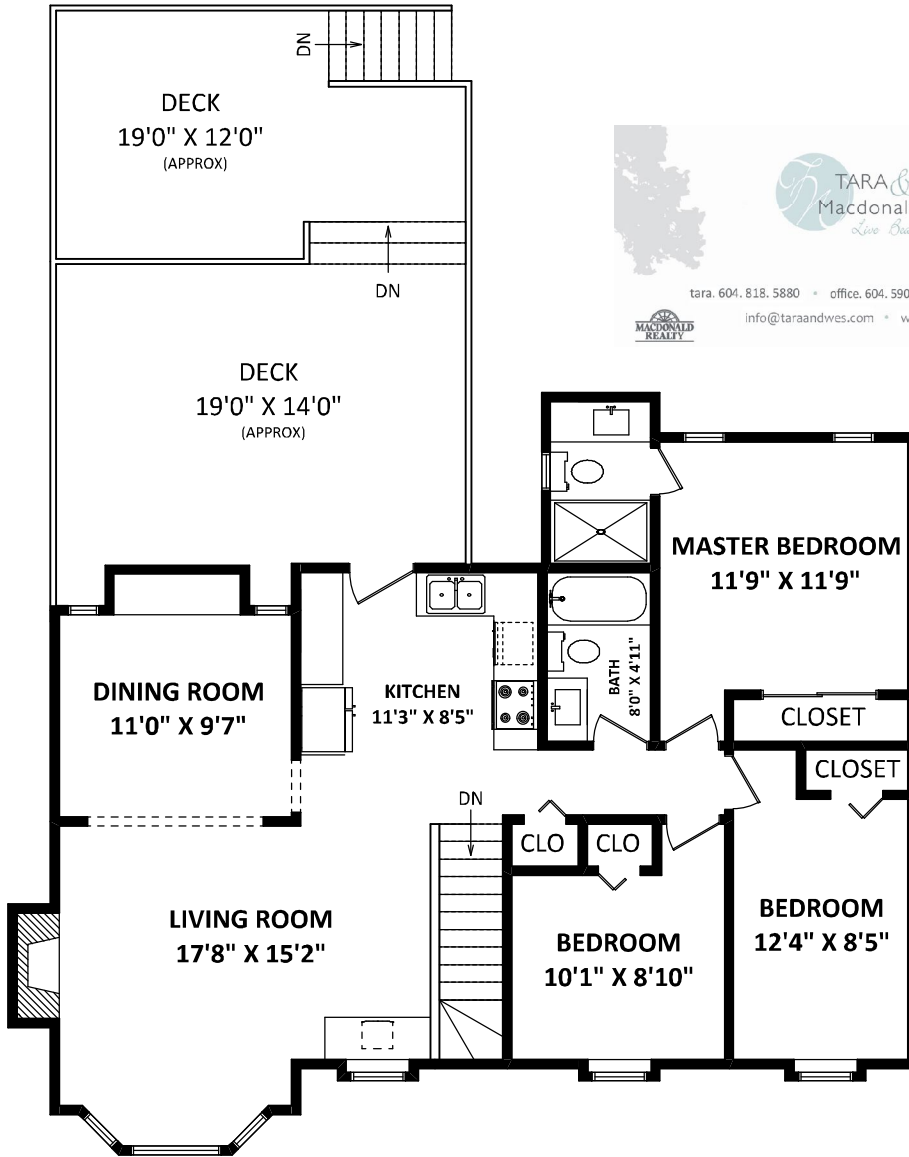


20902 94B Avenue,
Langley, BC

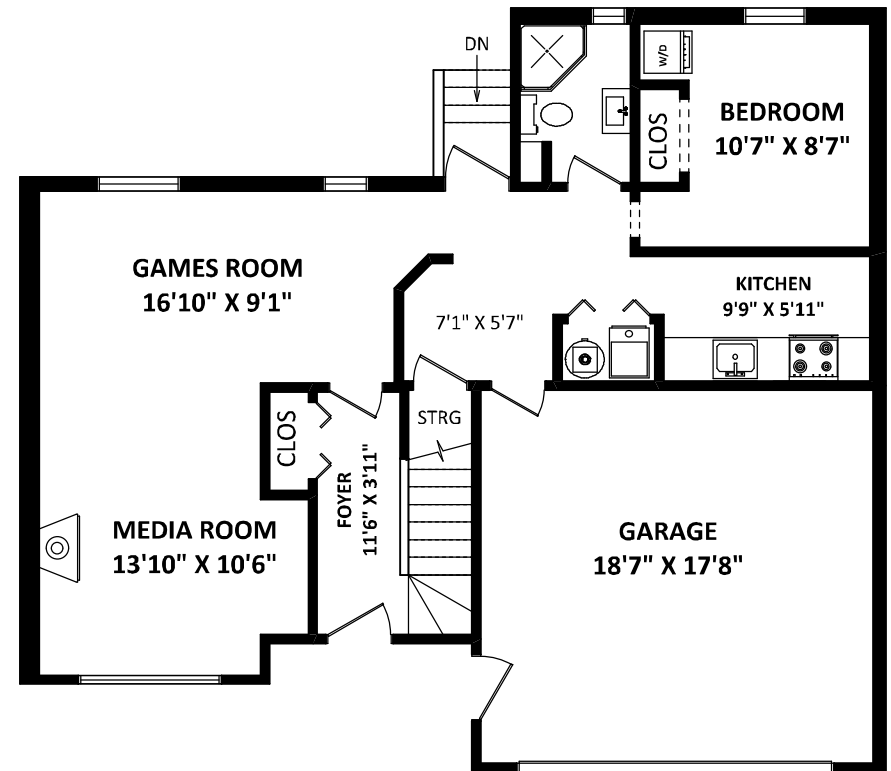
TOTAL FINISHED AREA: 1971 SQ.FT.

OTHER AREA(S)

GARAGE: 349 SQ.FT.
DECKS: 512 SQ.FT.*



MAIN FLOOR: 1131 SQ.FT.



LOWER FLOOR: 840 SQ.FT.

FLOOR PLAN BY: [AUGUST 17, 2018]
SEEVIRTUAL
TEL: 604-575-1244
www.seevirtual360.com

DISCLAIMER:
1. MEASUREMENTS ARE FOR PROMOTIONAL USE ONLY & ARE NOT INTENDED FOR CONSTRUCTION USE. ROOM DIMENSIONS ARE APPROXIMATE. MEASUREMENTS & CALCULATIONS FOR FINISHED AREAS ARE E&O INSURED.
2. FINISHED AREAS ARE ENCLOSED AREAS IN A HOUSE THAT ARE SUITABLE FOR YEAR-ROUND USE, EMBODYING WALLS, FLOORS, AND CEILINGS THAT ARE SIMILAR TO THE REST OF THE HOUSE. (ANSI Z765-2013)
3. THIS FLOOR PLAN MAY ONLY BE REPRODUCED WITH PERMISSION OF THE REALTOR(S) ON THIS FLOOR PLAN.
* ANY MEASUREMENT WITH AN ASTERISK (*) OR (APPROX) ARE APPROXIMATE AND FOR ILLUSTRATION PURPOSES ONLY AND ARE NOT E&O INSURED.

