

MAIN FLOOR: 1259 SQ.FT.



7211 Anvil Crescent,
Richmond, BC

WINNIE PAK

Personal Real Estate Corporation

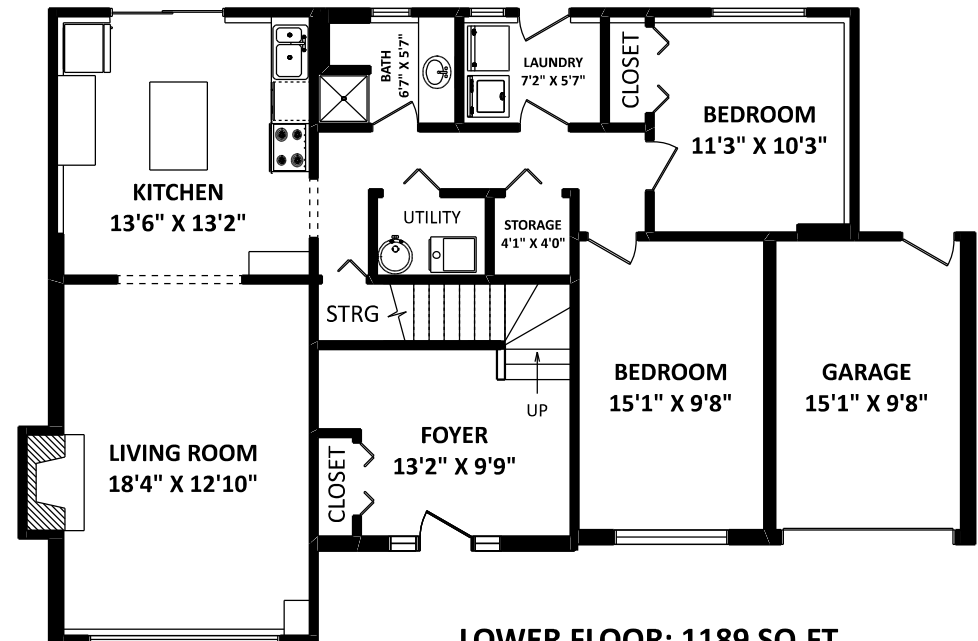
RE/MAX All Points Realty Grp.

Office: 604-936-0422
Mobile: 604-813-8000
winniepak@remax.net
www.winniepak.net

TOTAL FINISHED AREA: 2448 SQ.FT.

OTHER AREA(S)

GARAGE: 158 SQ.FT.
BALCONY: 238 SQ.FT.*



LOWER FLOOR: 1189 SQ.FT.



DISCLAIMER:

1. MEASUREMENTS ARE FOR PROMOTIONAL USE ONLY & ARE NOT INTENDED FOR CONSTRUCTION USE. ROOM DIMENSIONS ARE APPROXIMATE. MEASUREMENTS & CALCULATIONS FOR FINISHED AREAS ARE E&O INSURED.
 2. FINISHED AREAS ARE ENCLOSED AREAS IN A HOUSE THAT ARE SUITABLE FOR YEAR-ROUND USE, EMBODYING WALLS, FLOORS, AND CEILINGS THAT ARE SIMILAR TO THE REST OF THE HOUSE. (ANSI Z765-2003)
 3. THIS FLOOR PLAN MAY ONLY BE REPRODUCED WITH PERMISSION OF THE REALTOR(S) ON THIS FLOOR PLAN.
- * ANY MEASUREMENT WITH AN ASTERISK (*) OR (APPROX) ARE APPROXIMATE AND FOR ILLUSTRATION PURPOSES ONLY AND ARE NOT E&O INSURED.

FLOOR PLAN BY:

[JULY 13, 2018]



TEL: 604-575-1244

www.seevirtual360.com