



Sussex

CHRISTY LANIADO

*Royal LePage Sussex Realty
West Vancouver*

Cell: 604-349-0098

Office: 604-925-2911

christy@royallepage.ca

www.christylaniado.com

25 Oceanview Road,
Lions Bay, BC

MAIN FLOOR: 1419 SQ.FT.

UPPER FLOOR: 676 SQ.FT.

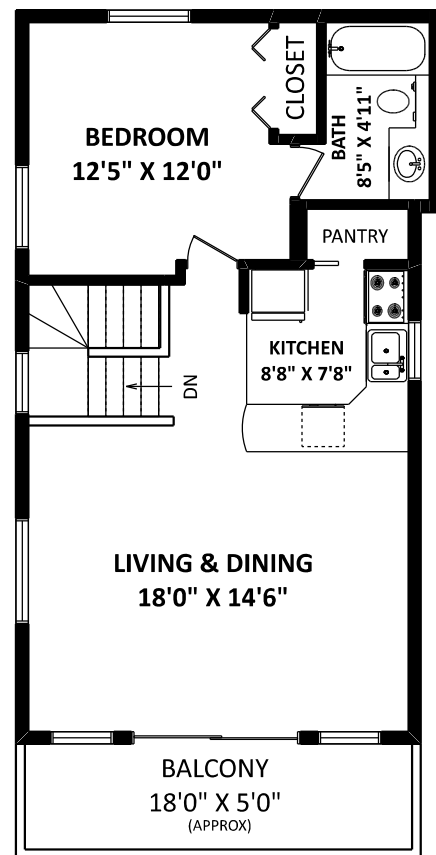
TOTAL FINISHED AREA: 2095 SQ.FT.

OTHER AREA(S)

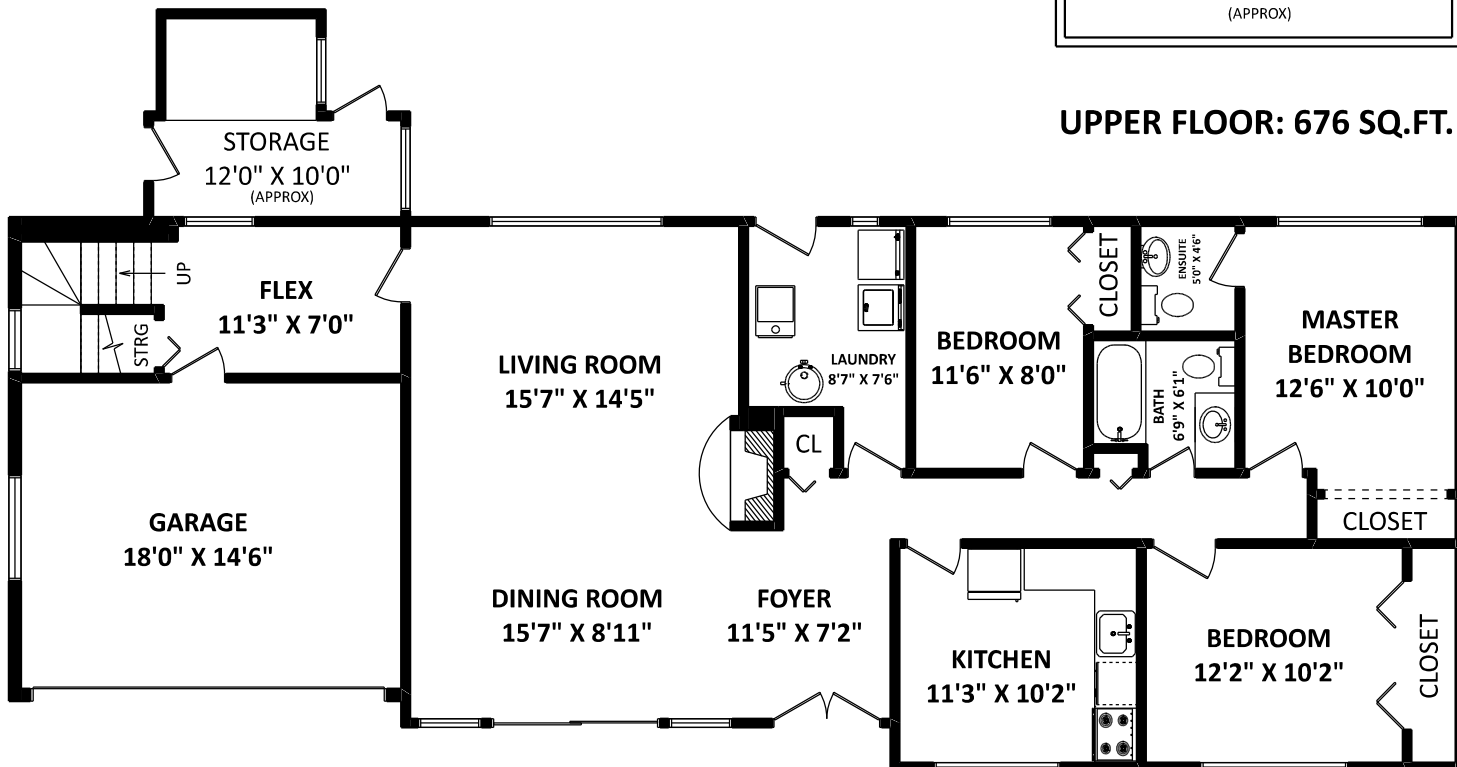
GARAGE: 280 SQ.FT.

BALCONY: 104 SQ.FT.*

STORAGE: 102 SQ.FT.*



UPPER FLOOR: 676 SQ.FT.



MAIN FLOOR: 1419 SQ.FT.

DISCLAIMER:

1. MEASUREMENTS ARE FOR PROMOTIONAL USE ONLY & ARE NOT INTENDED FOR CONSTRUCTION USE. ROOM DIMENSIONS ARE APPROXIMATE. MEASUREMENTS & CALCULATIONS FOR FINISHED AREAS ARE E&O INSURED.
 2. FINISHED AREAS ARE ENCLOSED AREAS IN A HOUSE THAT ARE SUITABLE FOR YEAR-ROUND USE, EMBODYING WALLS, FLOORS, AND CEILINGS THAT ARE SIMILAR TO THE REST OF THE HOUSE. (ANSI Z765-2003)
 3. THIS FLOOR PLAN MAY ONLY BE REPRODUCED WITH PERMISSION OF THE REALTOR(S) ON THIS FLOOR PLAN.
- * ANY MEASUREMENT WITH AN ASTERISK (*) OR (APPROX) ARE APPROXIMATE AND FOR ILLUSTRATION PURPOSES ONLY AND ARE NOT E&O INSURED.

FLOOR PLAN BY:

[APRIL 27, 2018]



TEL: 604-575-1244

www.seevirtual360.com

