

2439 W 7th Avenue,
Vancouver, BC



JOANNE LAROCQUE

**Dexter Associates Realty
Kerrisdale**

Cell: 604-831-9780

Office: 604-263-1144

larocque@dexterrealty.com

www.joannelarocque.com

TOTAL FINISHED AREA: 1796 SQ.FT.

OTHER AREA(S)

UNFINISHED AREA(S): 648 SQ.FT.

GARAGE: 401 SQ.FT.

DECKS: 131 SQ.FT.*

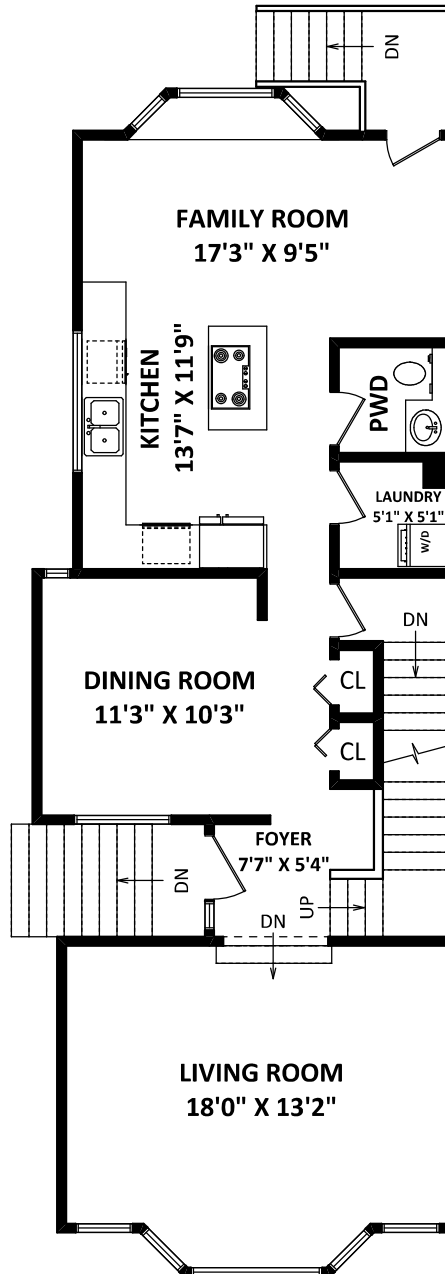
PATIO: 232 SQ.FT.*

PATIO
18'0" X 13'0"
(APPROX)

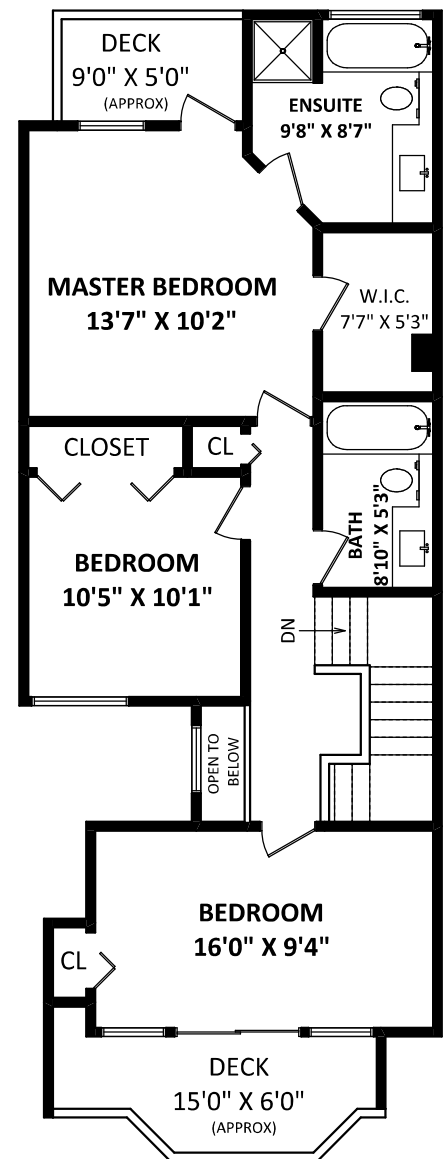
UNFINISHED AREA
32'0" X 17'3"

GARAGE
21'11" X 18'0"

**UNFINISHED
LOWER FLOOR: 648 SQ.FT.**



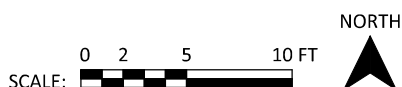
MAIN FLOOR: 962 SQ.FT.



UPPER FLOOR: 834 SQ.FT.

DISCLAIMER:

1. MEASUREMENTS ARE FOR PROMOTIONAL USE ONLY & ARE NOT INTENDED FOR CONSTRUCTION USE. ROOM DIMENSIONS ARE APPROXIMATE. MEASUREMENTS & CALCULATIONS FOR FINISHED AREAS ARE E&O INSURED.
 2. FINISHED AREAS ARE ENCLOSED AREAS IN A HOUSE THAT ARE SUITABLE FOR YEAR-ROUND USE, EMBODYING WALLS, FLOORS, AND CEILINGS THAT ARE SIMILAR TO THE REST OF THE HOUSE. (ANSI Z765-2003)
 3. THIS FLOOR PLAN MAY ONLY BE REPRODUCED WITH PERMISSION OF THE REALTOR(S) ON THIS FLOOR PLAN.
- * ANY MEASUREMENT WITH AN ASTERISK (*) OR (APPROX) ARE APPROXIMATE AND FOR ILLUSTRATION PURPOSES ONLY AND ARE NOT E&O INSURED.



FLOOR PLAN BY:

[APRIL 27, 2018]



TEL: 604-575-1244

www.seevirtual360.com