

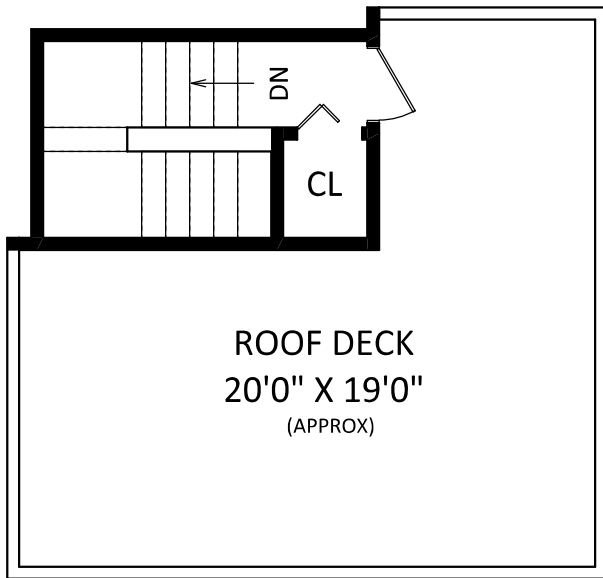
#12 7128 Stride Avenue,
Burnaby, BC

BOB CHARBONNEAU

RE/MAX Sabre Realty



Cell: 604-340-1747
Office: 604-942-0606
bob@askbob.ca
www.askbob.ca

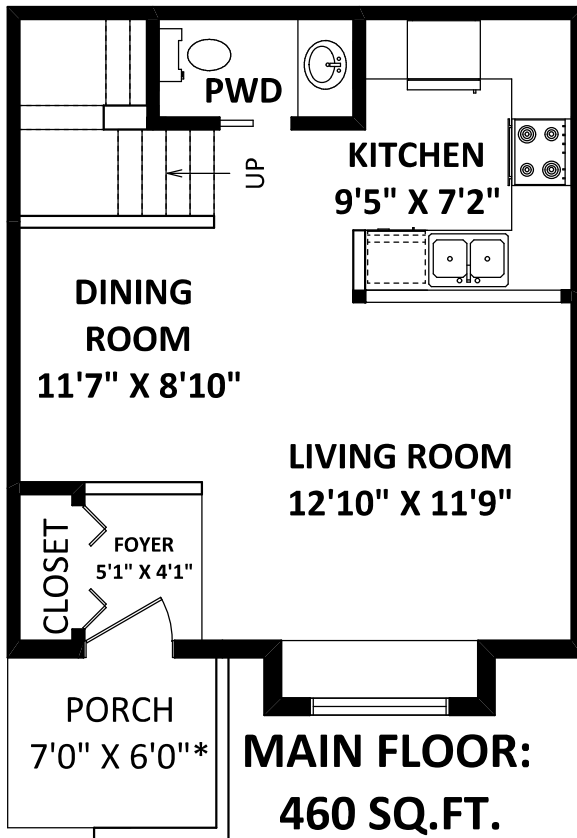


**TOP FLOOR:
89 SQ.FT.**

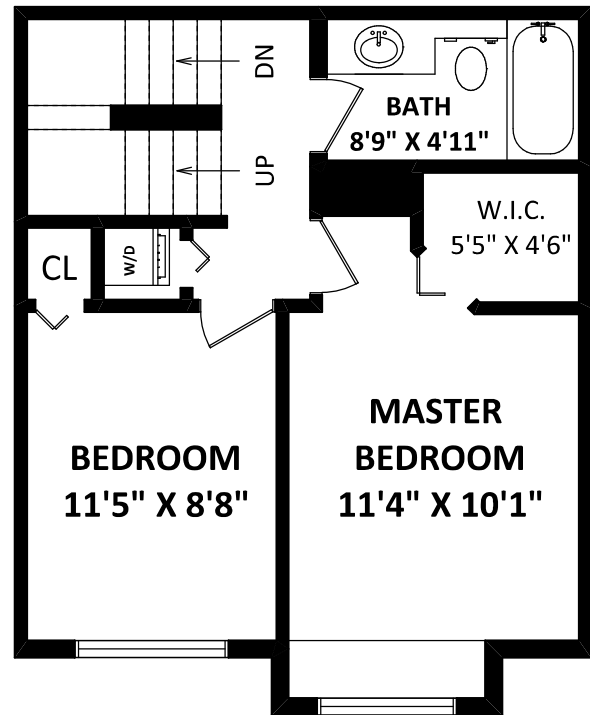
TOTAL STRATA AREA: 1008 SQ.FT.

OTHER AREA(S)

ROOF DECK: 292 SQ.FT.*
PORCH: 46 SQ.FT.*



**MAIN FLOOR:
460 SQ.FT.**



**UPPER FLOOR:
459 SQ.FT.**

DISCLAIMER:
1. MEASUREMENTS ARE FOR PROMOTIONAL USE ONLY & ARE NOT INTENDED FOR CONSTRUCTION USE.
ROOM DIMENSIONS ARE APPROXIMATE. MEASUREMENTS & CALCULATIONS FOR FINISHED AREAS ARE E&O INSURED.
2. FINISHED AREAS ARE ENCLOSED AREAS IN A HOUSE THAT ARE SUITABLE FOR YEAR-ROUND USE,
EMBODIED WALLS, FLOORS, AND CEILINGS THAT ARE SIMILAR TO THE REST OF THE HOUSE. (ANSI Z765-2003)
3. THIS FLOOR PLAN MAY ONLY BE REPRODUCED WITH PERMISSION OF THE REALTOR(S) ON THIS FLOOR PLAN.
* ANY MEASUREMENT WITH AN ASTERISK (*) OR (APPROX) ARE APPROXIMATE AND FOR ILLUSTRATION PURPOSES
ONLY AND ARE NOT E&O INSURED.
4. THIS FLOOR PLAN IS FOR PROMOTIONAL USE ONLY & ARE NOT E&O INSURED.



SCALE: 0 2 5 10 FT

FLOOR PLAN BY:

[FEBRUARY 6, 2018]



TEL: 604-575-1244
www.seevirtual360.com