



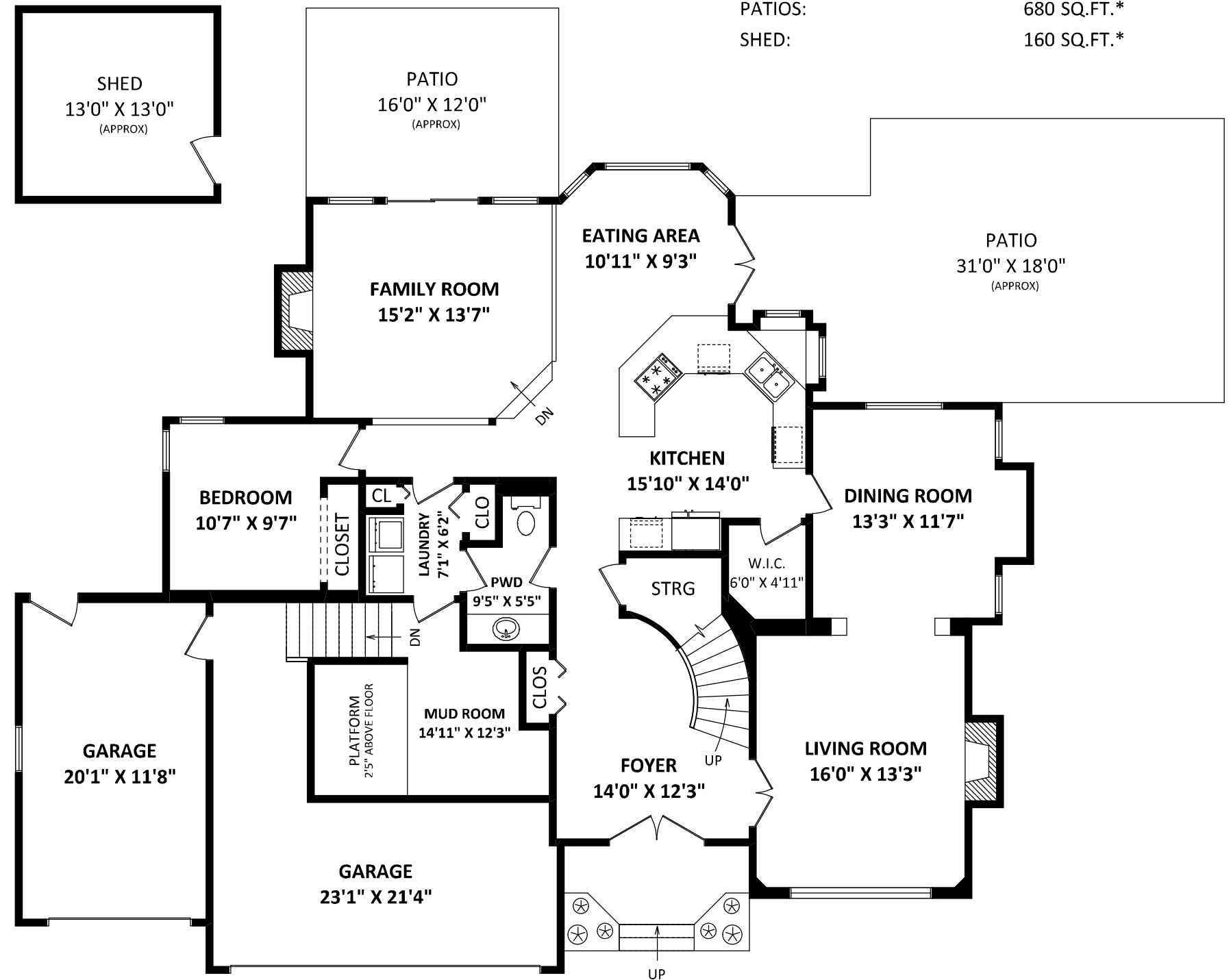
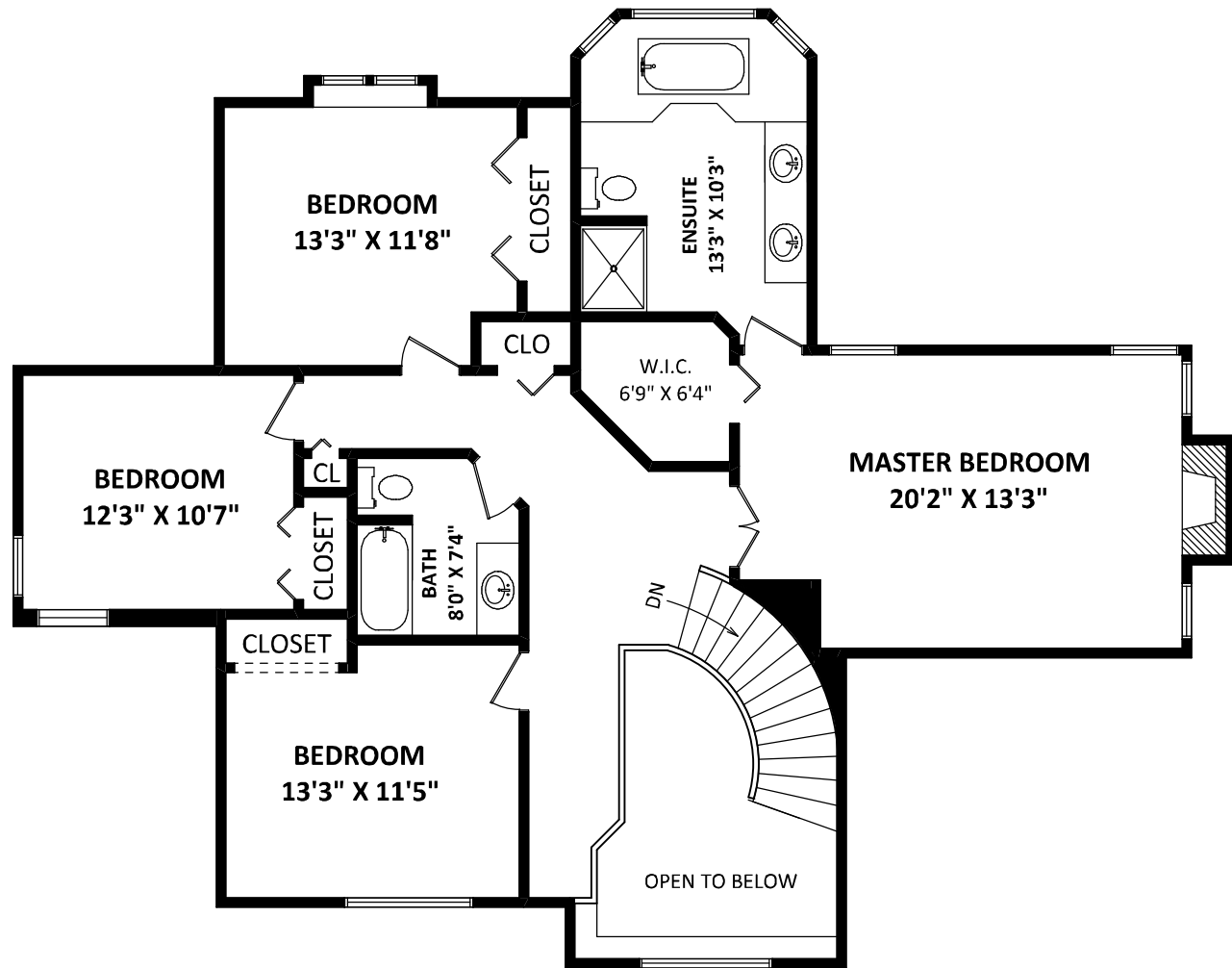
MIKE GRAHAME & TYSON ANGUS
 Personal Real Estate Corporation

HomeLife Benchmark Realty
 Phone: 604.531.1111
 sold@mikegrahame.com
 www.mikegrahame.com

2910 145A Street,
 Surrey, BC

TOTAL FINISHED AREA: 2873 SQ.FT.

OTHER AREA(S)
 GARAGES + MUD ROOM: 745 SQ.FT.
 PATIOS: 680 SQ.FT.*
 SHED: 160 SQ.FT.*



FLOOR PLAN BY:
 [JANUARY 12, 2018]
 SEEVIRTUAL
 TEL: 604-575-1244
 www.seevirtual360.com

DISCLAIMER:
 1. MEASUREMENTS ARE FOR PROMOTIONAL USE ONLY & ARE NOT INTENDED FOR CONSTRUCTION USE. ROOM DIMENSIONS ARE APPROXIMATE. MEASUREMENTS & CALCULATIONS FOR FINISHED AREAS ARE E&O INSURED.
 2. FINISHED AREAS ARE ENCLOSED AREAS IN A HOUSE THAT ARE SUITABLE FOR YEAR-ROUND USE, EMBODYING WALLS, FLOORS, AND CEILINGS THAT ARE SIMILAR TO THE REST OF THE HOUSE. (ANSI Z765-2003)
 3. THIS FLOOR PLAN MAY ONLY BE REPRODUCED WITH PERMISSION OF THE REALTOR(S) ON THIS FLOOR PLAN.
 * ANY MEASUREMENT WITH AN ASTERISK (*) OR (APPROX) ARE APPROXIMATE AND FOR ILLUSTRATION PURPOSES ONLY AND ARE NOT E&O INSURED.



MAIN FLOOR: 1565 SQ.FT.