

**51421 YALE RD:**  
**EAST SUITE: 852 SQ.FT.**  
**WEST SUITE: 777 SQ.FT.**



**DAVID CORRIE**

*RE/MAX Little Oak Realty*

Phone: 604-859-2341

Cell: 604-897-1454

david@davidcorrie.com

www.davidcorrie.com

**51409 & 51421 Yale Road,**  
**Chilliwack, BC**

**TOTAL FINISHED AREA: 3071 SQ.FT.**

51409 YALE RD: 1442 SQ.FT.

51421 YALE RD: 1629 SQ.FT.

*OTHER AREA(S)*

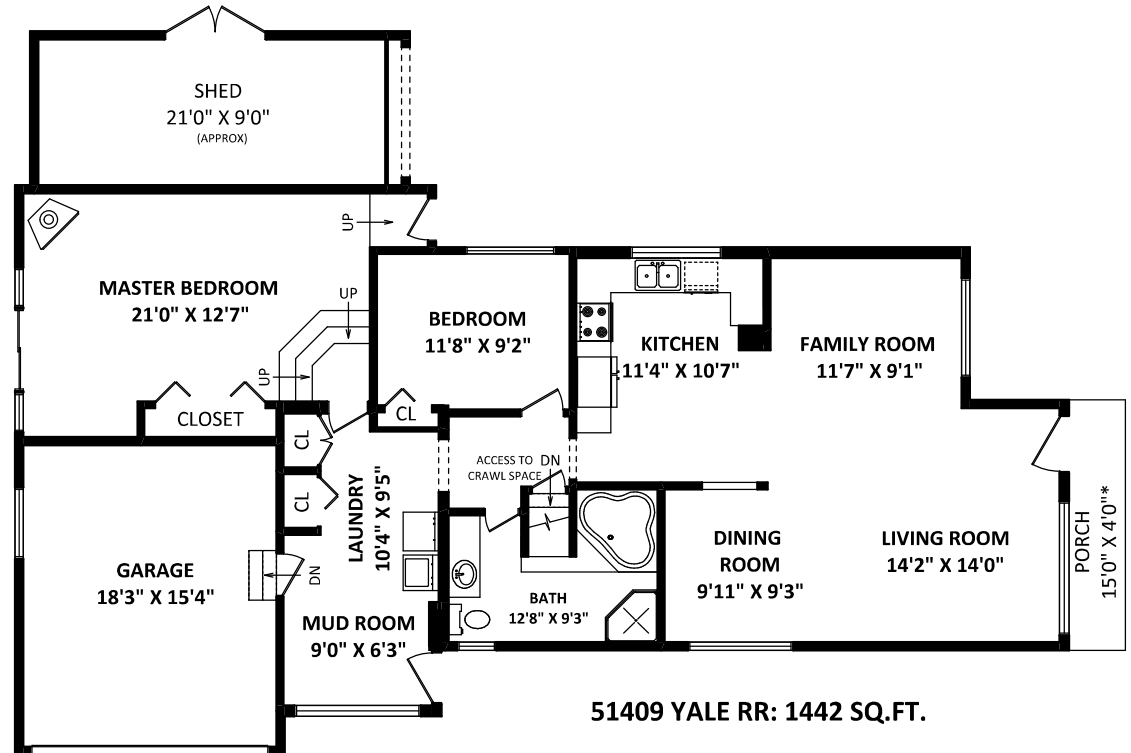
51409 YALE RD GARAGE: 279 SQ.FT.

PORCH: 52 SQ.FT.\*

SHEDS: 215 SQ.FT.\*

51421 YALE RD GARAGE: 581 SQ.FT.

SHEDS: 166 SQ.FT.\*



**51409 YALE RR: 1442 SQ.FT.**



**DISCLAIMER:**

1. MEASUREMENTS ARE FOR PROMOTIONAL USE ONLY & ARE NOT INTENDED FOR CONSTRUCTION USE. ROOM DIMENSIONS ARE APPROXIMATE. MEASUREMENTS & CALCULATIONS FOR FINISHED AREAS ARE E&O INSURED.
2. FINISHED AREAS ARE ENCLOSED AREAS IN A HOUSE THAT ARE SUITABLE FOR YEAR-ROUND USE, INCLUDING WALLS, FLOORS, AND CEILINGS THAT ARE SIMILAR TO THE REST OF THE HOUSE. [ANSI Z765-2003]
3. THIS FLOOR PLAN MAY ONLY BE REPRODUCED WITH PERMISSION OF THE REALTOR(S) ON THIS FLOOR PLAN. \* ANY MEASUREMENT WITH AN ASTERISK (\*) OR (APPROX) ARE APPROXIMATE AND FOR ILLUSTRATION PURPOSES ONLY AND ARE NOT E&O INSURED.

FLOOR PLAN BY: [NOVEMBER 21, 2017]  
  
 TEL: 604-575-1244  
 www.seevirtual360.com