

5685 Westport Road,
West Vancouver, B.C.

Main Floor: 1,284 sq.ft.
Upper Floor: 788 sq.ft.
Lower Floor: 343 sq.ft.

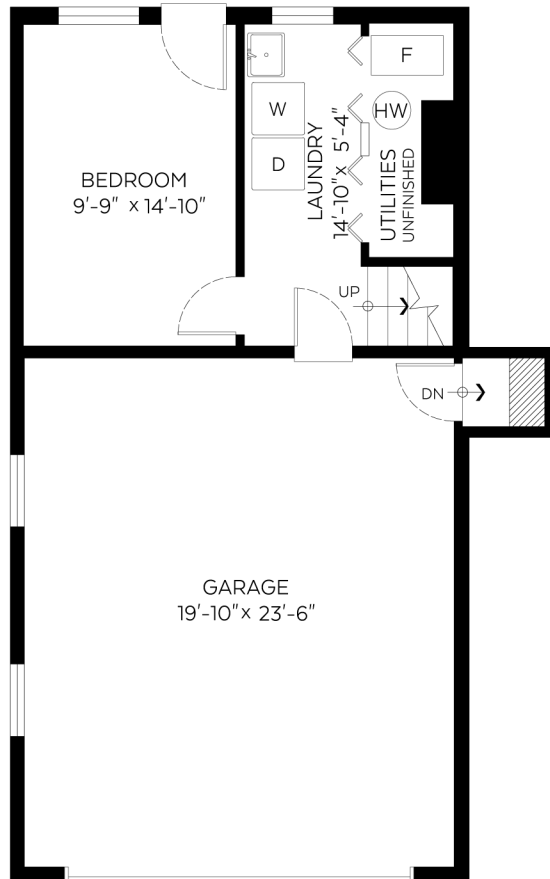
Total: 2,415 sq.ft.

Auxiliary Area

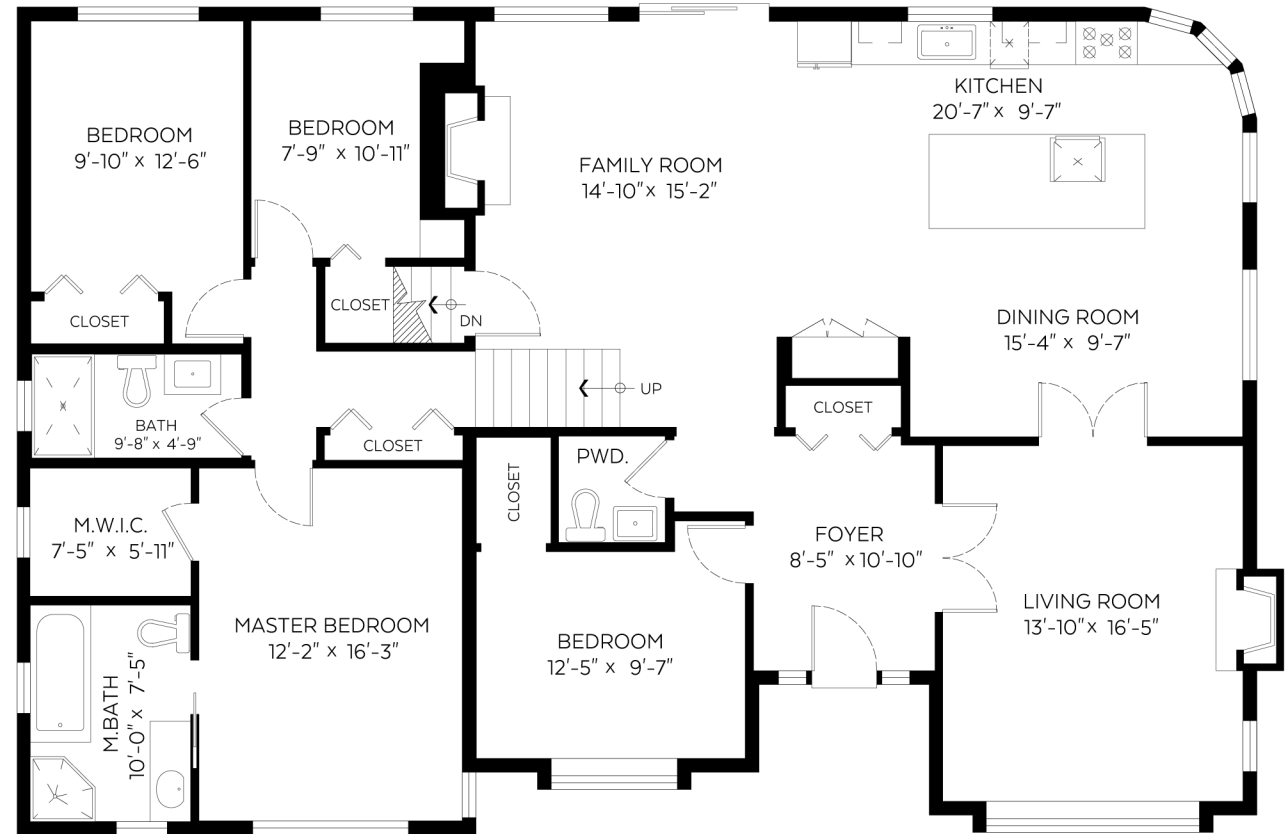
Garage: 527 sq.ft.

Lower Floor Plan

Floor Area: 343 sq.ft



SCALE
0' 5'



Upper Floor Plan

Floor Area: 788 sq.ft

Main Floor Plan

Floor Area: 1,284 sq.ft

Measured on: May 24, 2017

