



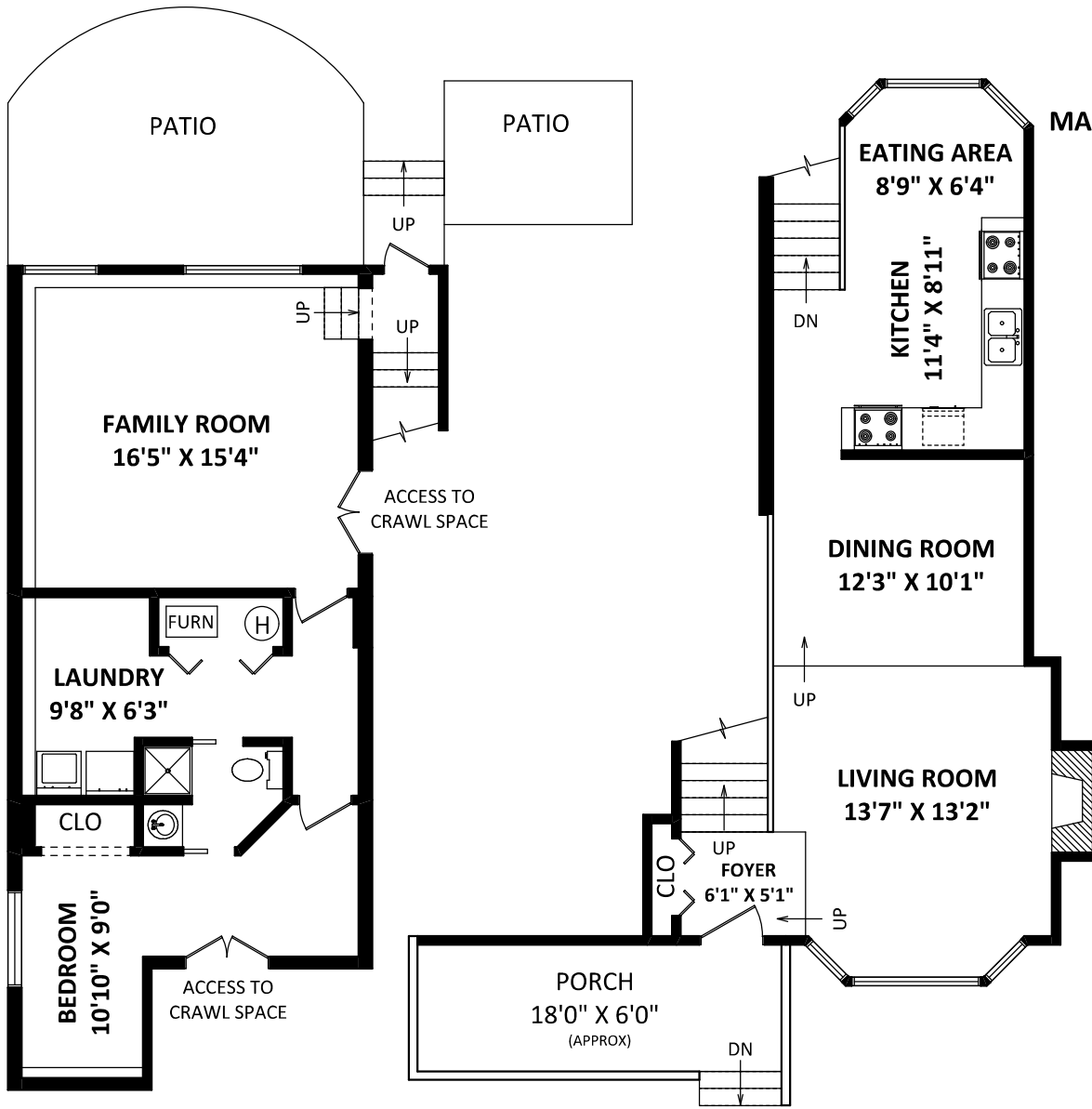
852 Nairn Court,
North Vancouver, BC

MAGGIE CHAN & CAROL KERMAN

*Sutton Group West Coast
North Vancouver*
Cell: 604-961-2266 (Maggie)
Cell: 604-834-7003 (Carol)
Office: 604-986-9321
maggiechan@shaw.ca
www.maggiechan.com

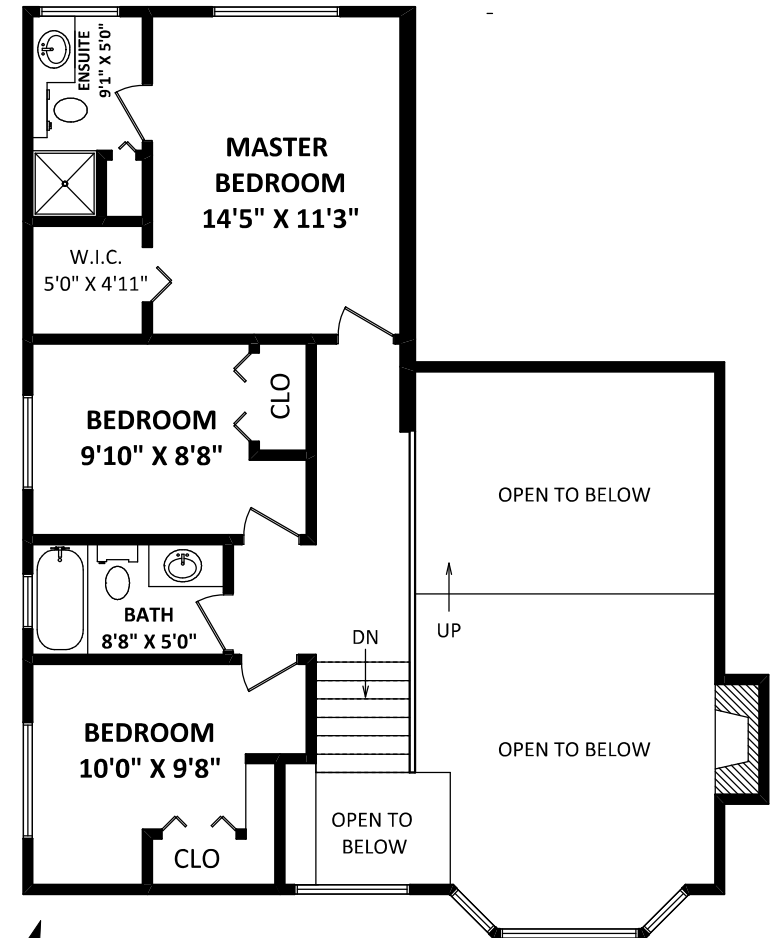
TOTAL FINISHED AREA: 1922 SQ.FT.

OTHER AREA(S)
PORCH: 127 SQ.FT.*
PATIO: 300 SQ.FT.*
CRAWL SPACE STORAGE: 350 SQ.FT.*



LOWER FLOOR: 663 SQ.FT.

MAIN FLOOR: 585 SQ.FT.



UPPER FLOOR: 674 SQ.FT.

FLOOR PLAN BY: [SEPTEMBER 27, 2017]

TEL: 604-575-1244
www.seevirtual360.com

DISCLAIMER:
1. MEASUREMENTS ARE FOR PROMOTIONAL USE ONLY & ARE NOT INTENDED FOR CONSTRUCTION USE.
ROOM DIMENSIONS ARE APPROXIMATE. MEASUREMENTS & CALCULATIONS FOR FINISHED AREAS ARE E&O INSURED.
2. FINISHED AREAS ARE ENCLOSED AREAS IN A HOUSE THAT ARE SUITABLE FOR YEAR-ROUND USE,
EMBODYING WALLS, FLOORS, AND CEILINGS THAT ARE SIMILAR TO THE REST OF THE HOUSE. (ANSI Z765-2003)
3. THIS FLOOR PLAN MAY ONLY BE REPRODUCED WITH PERMISSION OF THE REALTOR(S) ON THIS FLOOR PLAN.
* ANY MEASUREMENT WITH AN ASTERISK (*) OR (APPROX) ARE APPROXIMATE AND FOR ILLUSTRATION PURPOSES ONLY AND ARE NOT E&O INSURED.

