

#306 139 W 22 St Street,
North Vancouver, BC

KIM TAYLOR

Royal LePage Sussex

Cell: 604-315-2645

Office: 604-925-2911

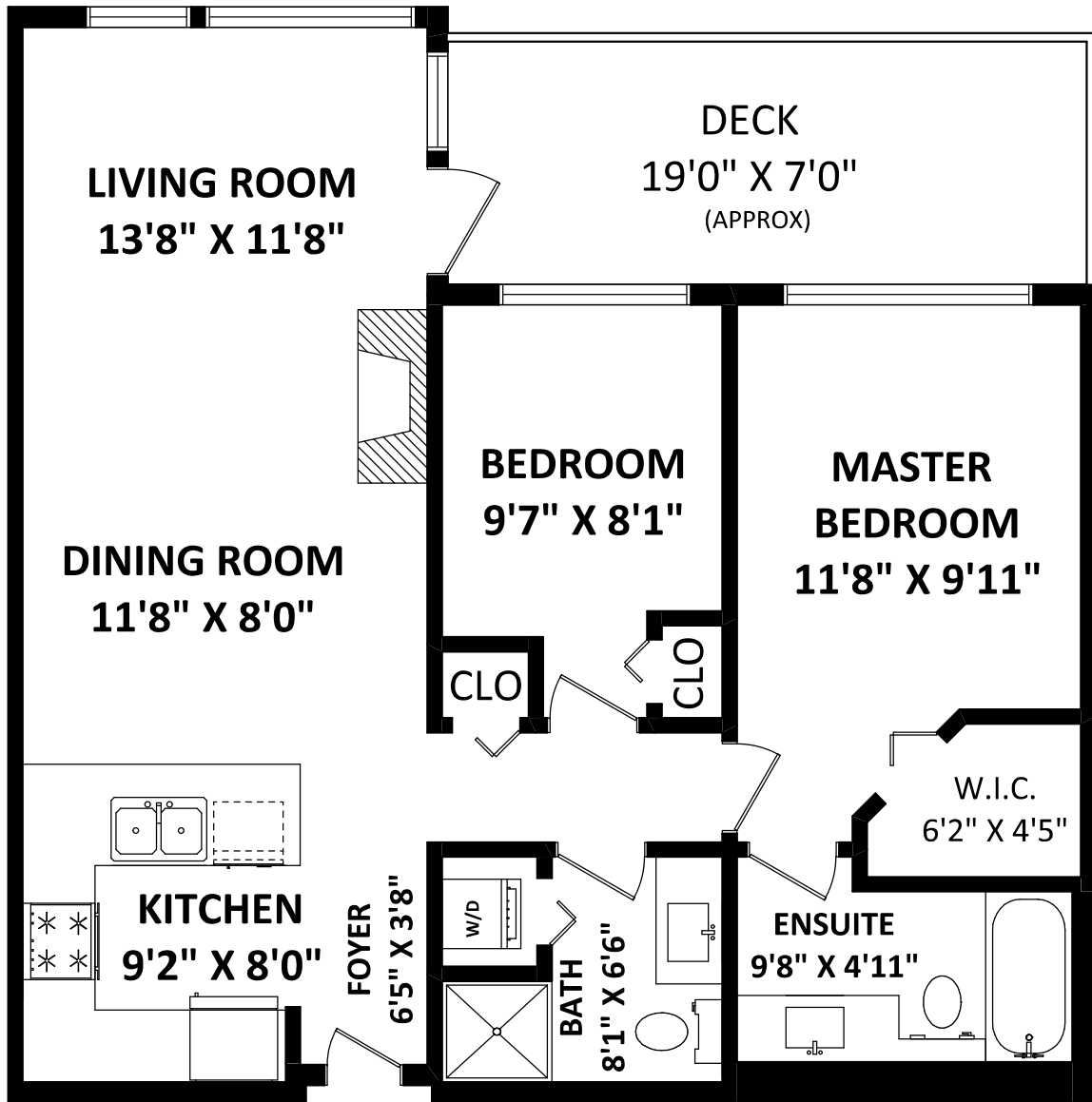
kim@kimtaylorhomes.com

www.kimtaylorhomes.com

STRATA AREA: 821 SQ.FT.

OTHER AREA(S)

DECK: 132 SQ.FT.*



DISCLAIMER:

1. MEASUREMENTS ARE FOR PROMOTIONAL USE ONLY & ARE NOT INTENDED FOR CONSTRUCTION USE. ROOM DIMENSIONS ARE APPROXIMATE. MEASUREMENTS & CALCULATIONS FOR FINISHED AREAS ARE E&O INSURED.
2. FINISHED AREAS ARE ENCLOSED AREAS IN A HOUSE THAT ARE SUITABLE FOR YEAR-ROUND USE, EMBODYING WALLS, FLOORS, AND CEILINGS THAT ARE SIMILAR TO THE REST OF THE HOUSE. (ANSI Z765-2003)
3. THIS FLOOR PLAN MAY ONLY BE REPRODUCED WITH PERMISSION OF THE REALTOR(S) ON THIS FLOOR PLAN. * ANY MEASUREMENT WITH AN ASTERISK (*) OR (APPROX) ARE APPROXIMATE AND FOR ILLUSTRATION PURPOSES ONLY AND ARE NOT E&O INSURED.
4. STRATA AREA IS NOT E&O INSURED

FLOOR PLAN BY:

[AUGUST 30, 2017]



TEL: 604-575-1244

www.seevirtual360.com

