



MARY ELLEN MAASIK

Sutton Group West Coast - Kerrisdale

Cell: 604-657-8865

Office: 604-267-3800

mmaasik@sutton.com

4041 Vine Street,
Vancouver, BC

MAIN FLOOR: 696 SQ.FT.

UPPER FLOOR: 551 SQ.FT.

LOWER FLOOR: 686 SQ.FT.

TOTAL FINISHED AREA: 1933 SQ.FT.

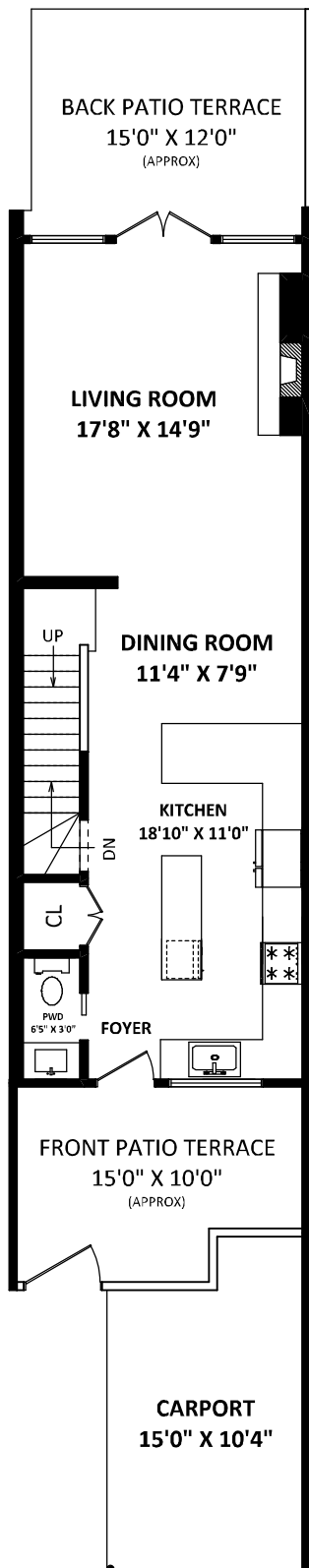
OTHER AREAS:

CARPORT: 174 SQFT.

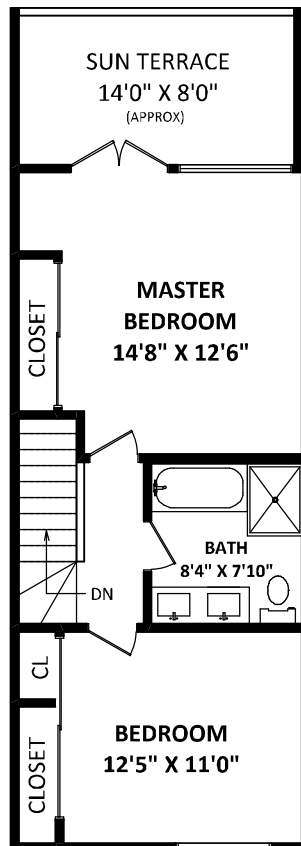
BACK PATIO TERRACE: 178 SQFT.*

FRONT PATIO TERRACE: 154 SQFT.*

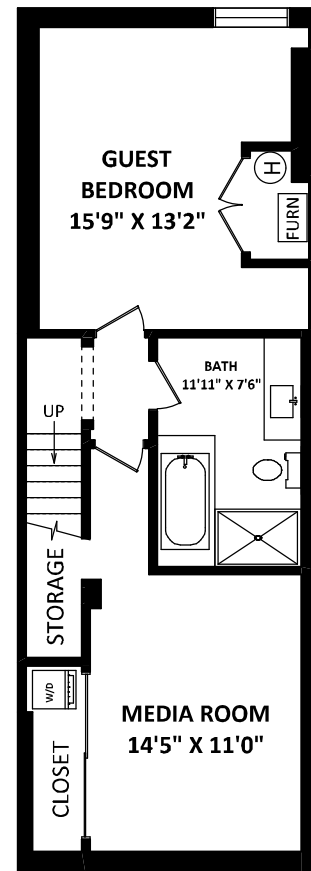
SUN TERRACE: 119 SQFT.*



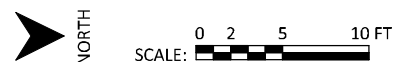
MAIN FLOOR: 696 SQ.FT.



UPPER FLOOR: 551 SQ.FT.



LOWER FLOOR: 686 SQ.FT.



FLOOR PLAN BY: [JUNE 26, 2017]
SEE VIRTUAL
TEL: 604-575-1244
www.seevirtual360.com

GENERAL NOTES:
1. MEASUREMENTS ARE FOR PROMOTIONAL USE ONLY & ARE NOT INTENDED FOR CONSTRUCTION USE. ROOM DIMENSIONS ARE APPROXIMATE. MEASUREMENTS & CALCULATIONS FOR FINISHED AREAS ARE E&O INSURED.
2. FINISHED AREAS ARE ENCLOSED AREAS IN A HOUSE THAT ARE SUITABLE FOR YEAR-ROUND USE. ENCLOSED WALLS, FLOORS, AND CEILINGS THAT ARE SIMILAR TO THE REST OF THE HOUSE. (ANSI Z765-2003)
3. THIS FLOOR PLAN MAY ONLY BE REPRODUCED WITH PERMISSION OF THE REALTOR(S) ON THIS FLOOR PLAN.
* ANY MEASUREMENT WITH AN ASTERISK (*) OR (APPROX) ARE APPROXIMATE AND FOR ILLUSTRATION PURPOSES ONLY AND ARE NOT E&O INSURED.