

**#41 2216 Folkestone Way,**  
West Vancouver, BC



**DON EILERS**

**RE/MAX Masters Realty**

Cell: 604-889-9449

don@doneilers.com

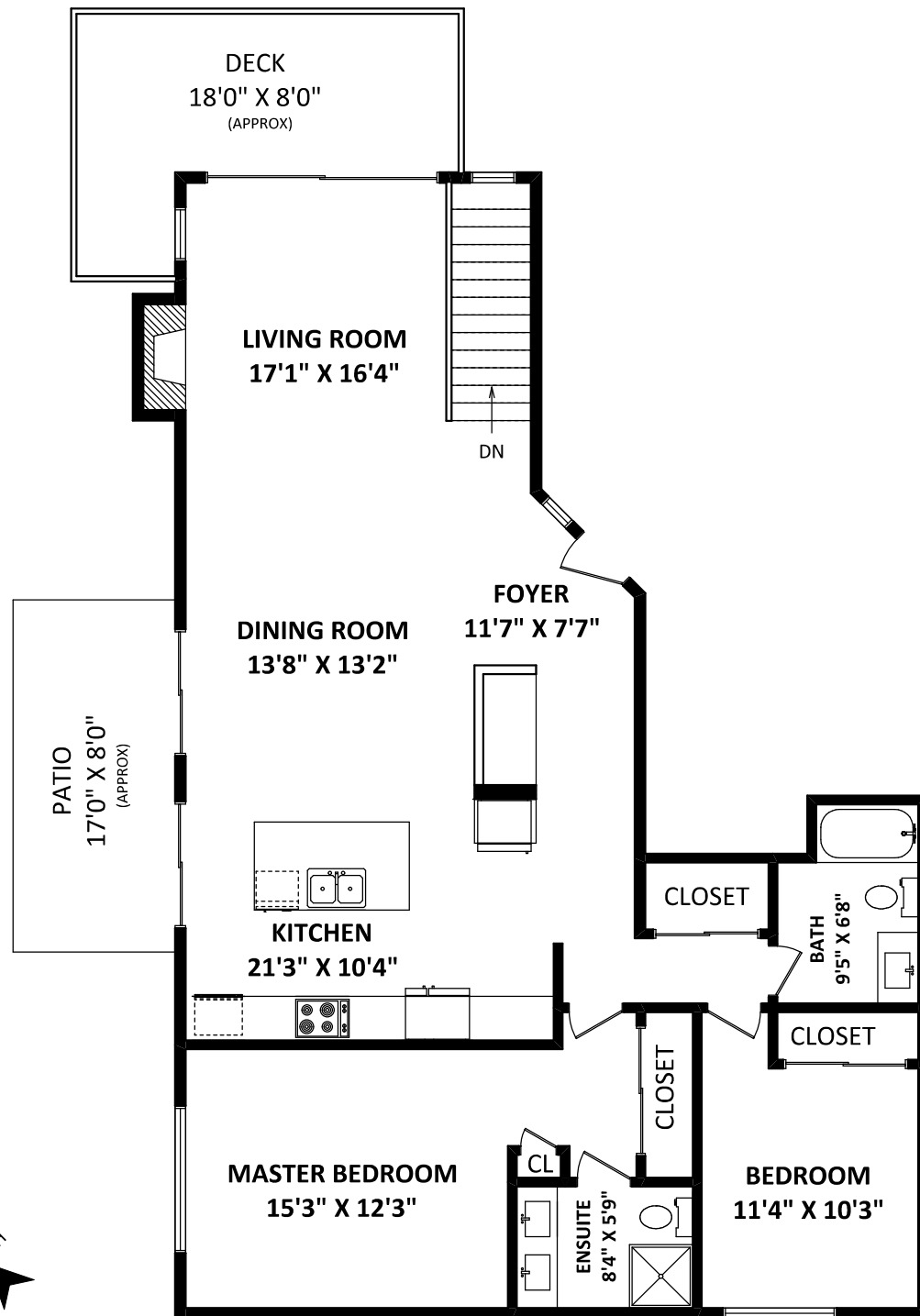
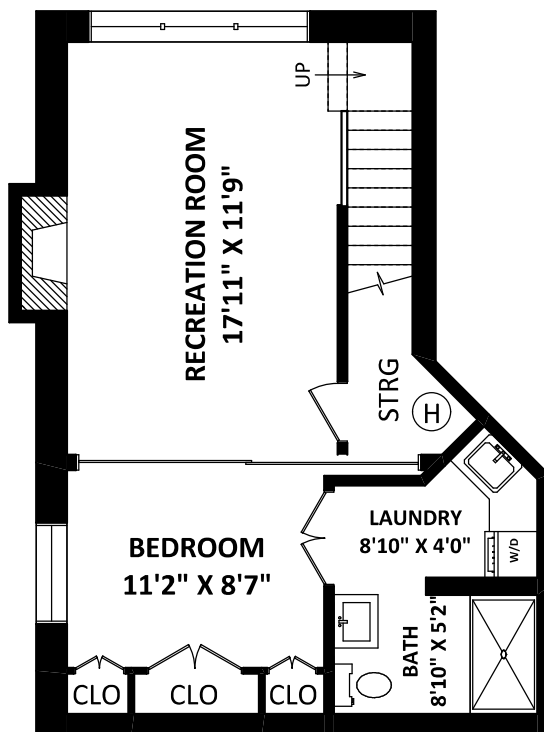
www.doneilers.com

**TOTAL FINISHED AREA: 1969 SQ.FT.**

**OTHER AREA(S)**

DECK: 164 SQ.FT.\*

PATIO: 128 SQ.FT.\*



SCALE: 0 2 5 10 FT

**DISCLAIMER:**

1. MEASUREMENTS ARE FOR PROMOTIONAL USE ONLY & ARE NOT INTENDED FOR CONSTRUCTION USE. ROOM DIMENSIONS ARE APPROXIMATE. MEASUREMENTS & CALCULATIONS FOR FINISHED AREAS ARE E&O INSURED.
  2. FINISHED AREAS ARE ENCLOSED AREAS IN A HOUSE THAT ARE SUITABLE FOR YEAR-ROUND USE, EMBODYING WALLS, FLOORS, AND CEILINGS THAT ARE SIMILAR TO THE REST OF THE HOUSE. (ANSI Z765-2003)
  3. THIS FLOOR PLAN MAY ONLY BE REPRODUCED WITH PERMISSION OF THE REALTOR(S) ON THIS FLOOR PLAN.
- \* ANY MEASUREMENT WITH AN ASTERISK (\*) OR (APPROX) ARE APPROXIMATE AND FOR ILLUSTRATION PURPOSES ONLY AND ARE NOT E&O INSURED.

FLOOR PLAN BY:

[JUNE 26, 2017]



TEL: 604-575-1244

www.seevirtual360.com