



**MIKE GRAHAME & TYSON ANGUS**  
Personal Real Estate Corporation

**HomeLife Benchmark Realty**

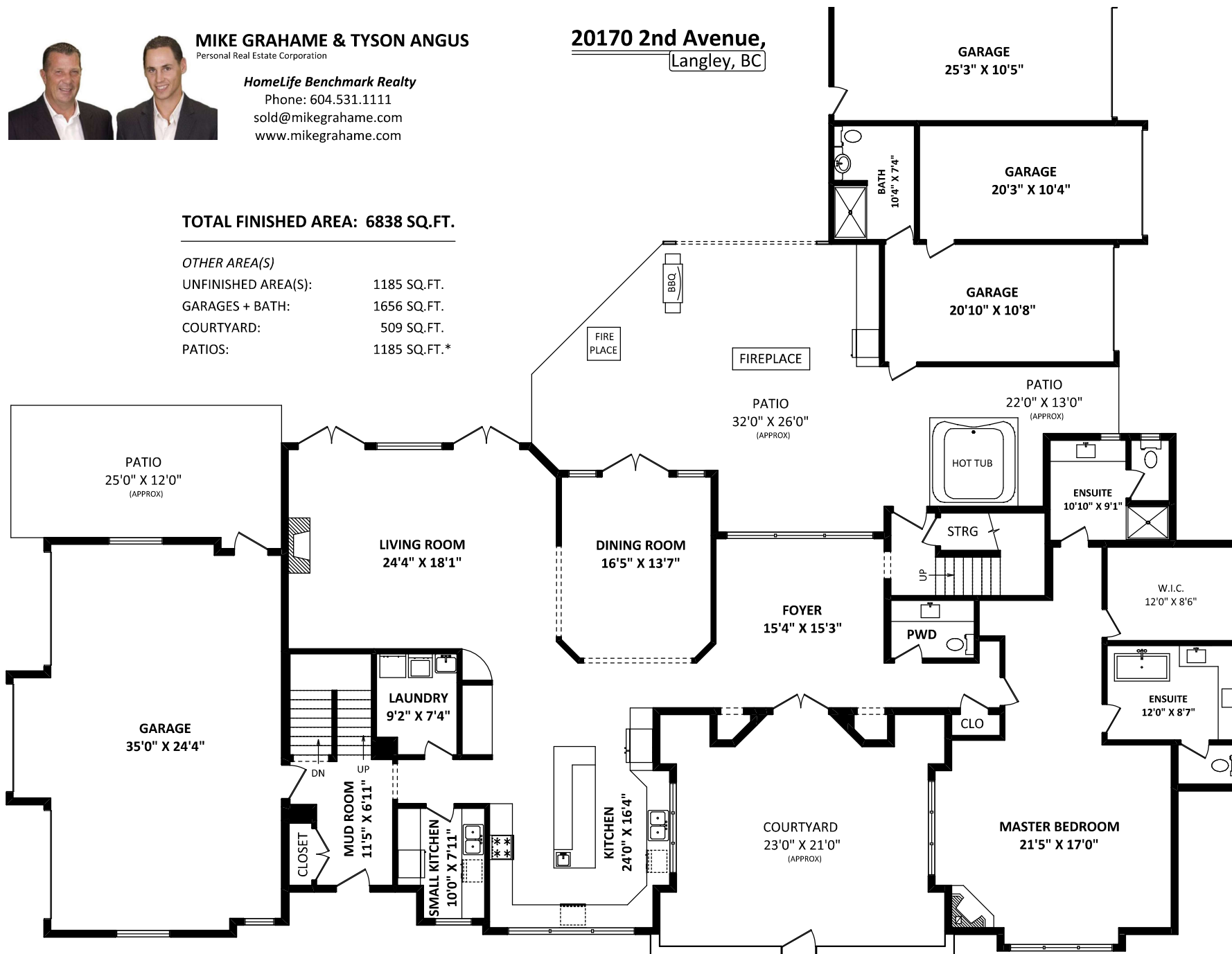
Phone: 604.531.1111  
sold@mikegrahame.com  
www.mikegrahame.com

**20170 2nd Avenue,  
Langley, BC**

**TOTAL FINISHED AREA: 6838 SQ.FT.**

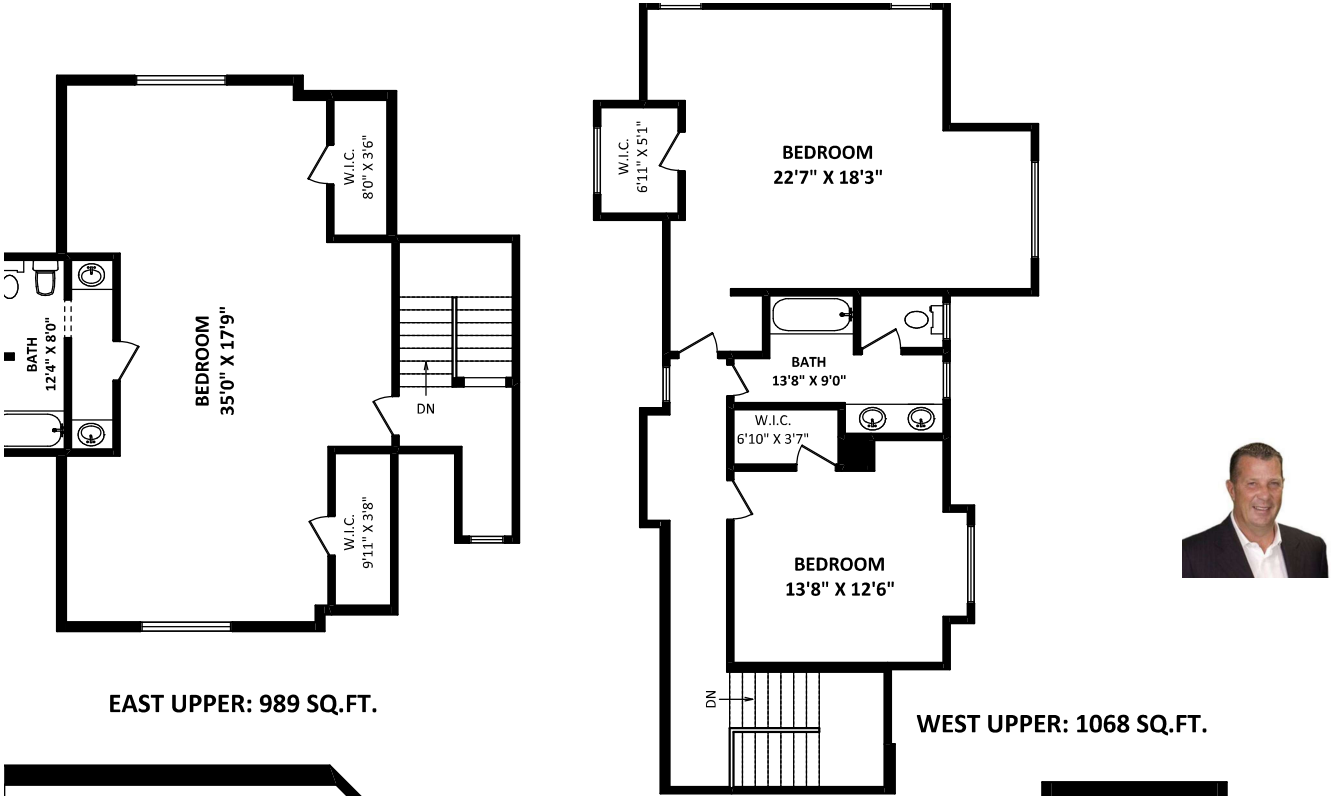
*OTHER AREA(S)*

UNFINISHED AREA(S): 1185 SQ.FT.  
GARAGES + BATH: 1656 SQ.FT.  
COURTYARD: 509 SQ.FT.  
PATIOS: 1185 SQ.FT.\*



**MAIN FLOOR: 3026 SQ.FT.**

**20170 2nd Avenue,**  
Langley, BC



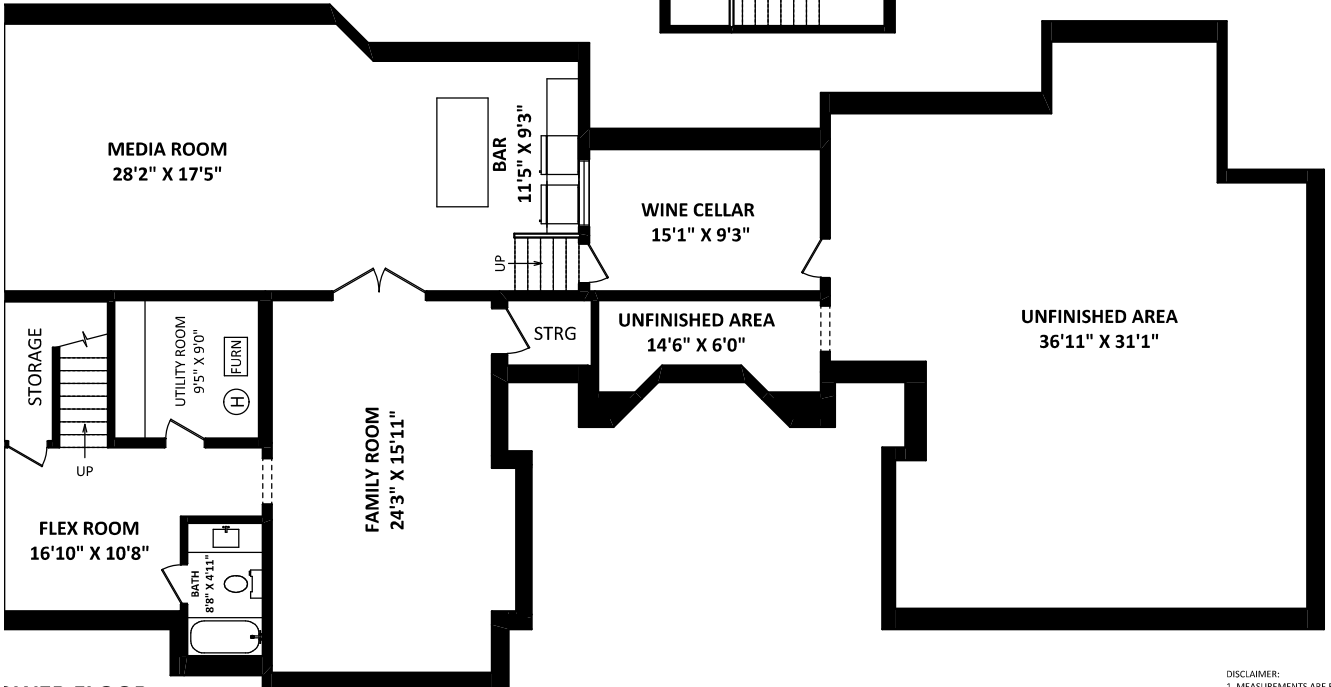
**EAST UPPER: 989 SQ.FT.**

**WEST UPPER: 1068 SQ.FT.**



**MIKE GRAHAME & TYSON ANGUS**  
Personal Real Estate Corporation

*HomeLife Benchmark Realty*  
Phone: 604.531.1111  
sold@mikegrahame.com  
www.mikegrahame.com



**LOWER FLOOR:**  
FINISHED AREA: 1757 SQ.FT.  
UNFINISHED AREA(S): 1185 SQ.FT.

**TOTAL FINISHED AREA: 6838 SQ.FT.**

*OTHER AREA(S)*

UNFINISHED AREA(S):	1185 SQ.FT.
GARAGES + BATH:	1656 SQ.FT.
COURTYARD:	509 SQ.FT.
PATIOS:	1185 SQ.FT.*



DISCLAIMER:  
1. MEASUREMENTS ARE FOR PROMOTIONAL USE ONLY & ARE NOT INTENDED FOR CONSTRUCTION USE. ROOM DIMENSIONS ARE APPROXIMATE. MEASUREMENTS & CALCULATIONS FOR FINISHED AREAS ARE E&O INSURED.  
2. FINISHED AREAS ARE ENCLOSED AREAS IN A HOUSE THAT ARE SUITABLE FOR YEAR-ROUND USE, EMBODYING WALLS, FLOORS, AND CEILINGS THAT ARE SIMILAR TO THE REST OF THE HOUSE. (ANSI Z765-2003)  
3. THIS FLOOR PLAN MAY ONLY BE REPRODUCED WITH PERMISSION OF THE REALTOR(S) ON THIS FLOOR PLAN.  
\* ANY MEASUREMENT WITH AN ASTERISK (\*) OR [APPROX] ARE APPROXIMATE AND FOR ILLUSTRATION PURPOSES ONLY AND ARE NOT E&O INSURED.

FLOOR PLAN BY: [MAY 24, 2017]  
  
TEL: 604-575-1244  
www.seevirtual360.com