

**MAIN FLOOR:** 2198 SQ.FT.  
**LOWER FLOOR:** 1043 SQ.FT.  


---

**TOTAL FINISHED AREA:** 2241 SQ.FT.

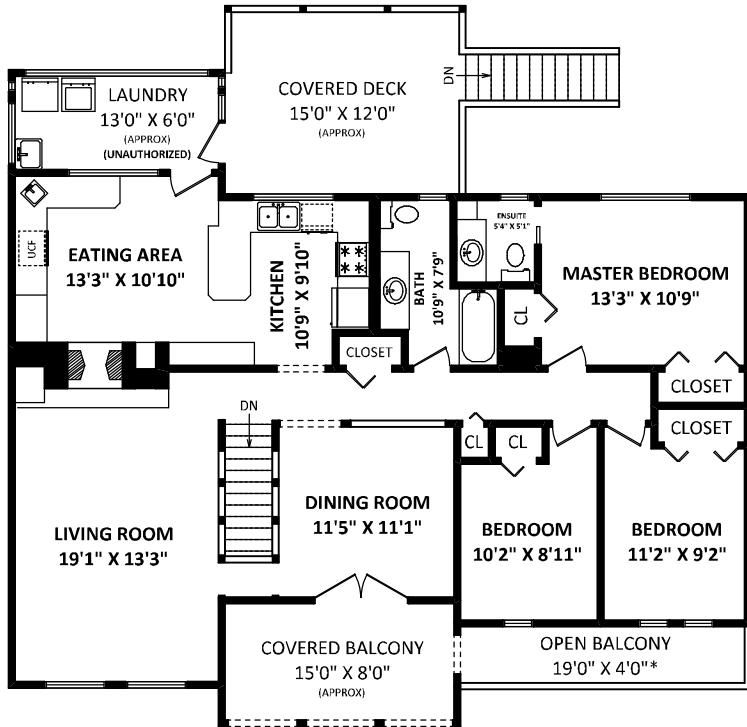


**DIANE CARDOSO**  
**RE/MAX Westcoast Realty**  
 Cell: 604-218-1412  
 Office: 604-273-2828  
 sold@dianecardoso.com  
 www.dianecardoso.com

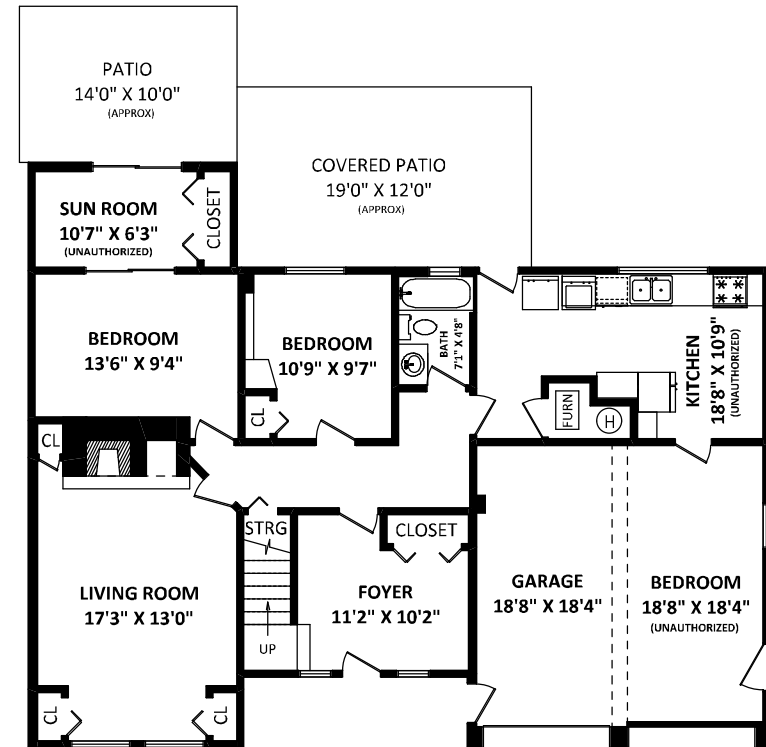
**10751 Springmont Drive,**  
 Richmond, BC

**OTHER AREA(S)**  
**GARAGE:** 378 SQ.FT.  
**COVERED PATIO:** 225 SQ.FT.\*  
**PATIO:** 144 SQ.FT.\*  
**COVERED BALCONY:** 123 SQ.FT.\*  
**OPEN BALCONY:** 77 SQ.FT.\*

**UNAUTHORIZED AND WITHOUT PERMIT**  
**LAUNDRY:** 92 SQ.FT.\*  
**SUNROOM:** 92 SQ.FT.\*  
**COVERED DECK:** 190 SQ.FT.\*  
**BASEMENT KITCHEN:** 226 SQ.FT.\*  
**BASEMENT BATH:** 41 SQ.FT.\*  
**CONVERTED GARAGE BEDROOM:** 182 SQ.FT.\*



**MAIN FLOOR: 1998 SQ.FT.**



**LOWER FLOOR: 1043 SQ.FT.**

FLOOR PLAN BY: [DECEMBER 28, 2016]  
  
 TEL: 604-575-1244  
 www.seevirtual360.com

**GENERAL NOTES:**  
 1. MEASUREMENTS ARE FOR PROMOTIONAL USE ONLY & ARE NOT INTENDED FOR CONSTRUCTION USE. ROOM DIMENSIONS ARE APPROXIMATE. MEASUREMENTS & CALCULATIONS FOR FINISHED AREAS ARE E&O INSURED.  
 2. FINISHED AREAS ARE ENCLOSED AREAS IN A HOUSE THAT ARE SUITABLE FOR YEAR-ROUND USE; EMBODDYING WALLS, FLOORS, AND CEILINGS THAT ARE SIMILAR TO THE REST OF THE HOUSE. (ANSI Z765-2003)  
 3. THIS FLOOR PLAN MAY ONLY BE REPRODUCED WITH PERMISSION OF THE REALTOR(S) ON THIS FLOOR PLAN.  
 \* ANY MEASUREMENT WITH AN ASTERISK (\*) OR (APPROX) ARE APPROXIMATE AND FOR ILLUSTRATION PURPOSES ONLY AND ARE NOT E&O INSURED.

