

#218 15210 Guildford Drive,
Surrey, BC



KIM TAYLOR

Royal LePage Sussex

Cell: 604-315-2645

Office: 604-926-6011

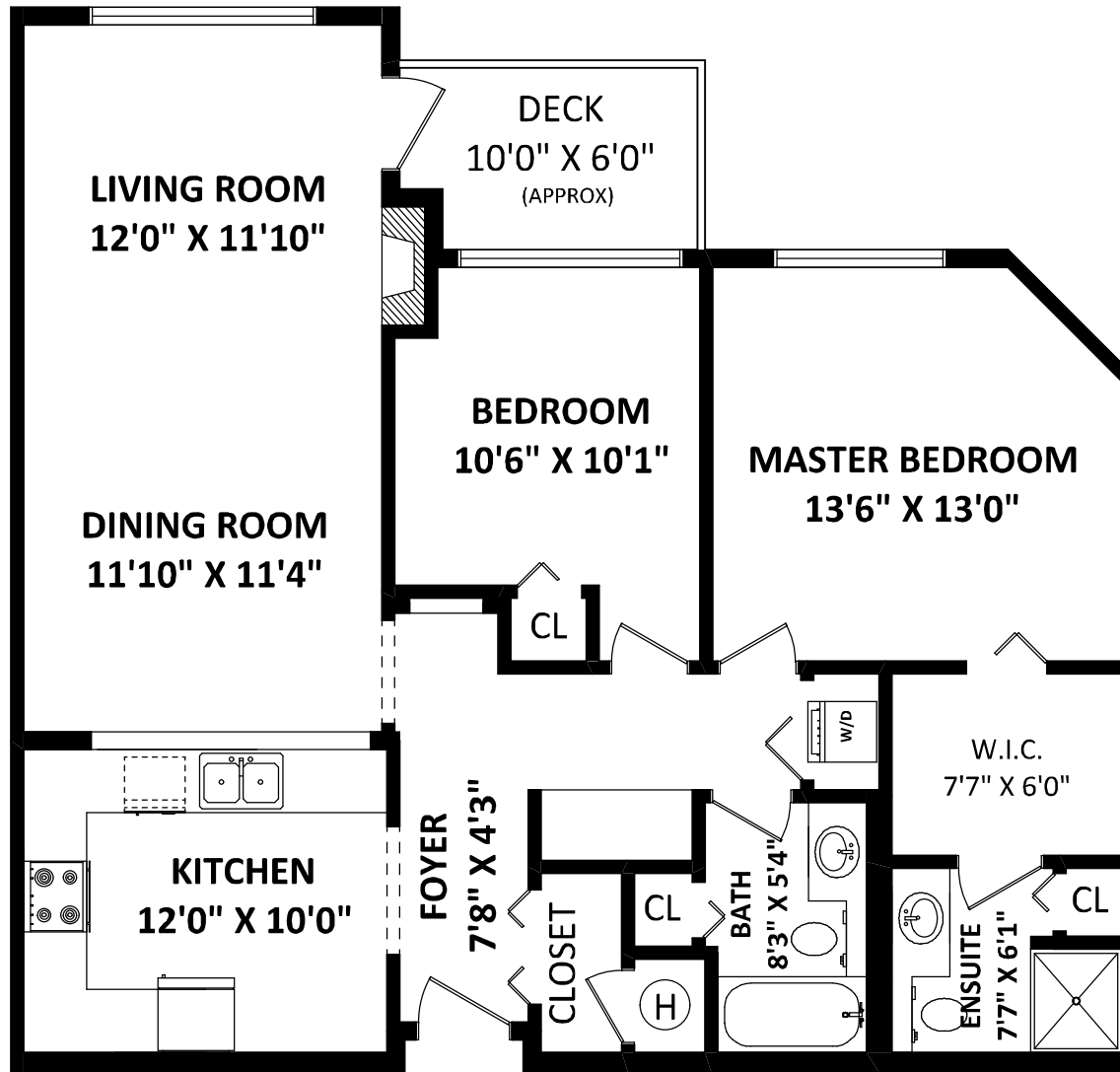
kim@kimtaylorhomes.com

www.kimtaylorhomes.com

TOTAL FINISHED AREA: 1072 SQ.FT.

OTHER AREA(S)

DECK: 61 SQ.FT.*



FLOOR PLAN BY: [OCTOBER 27, 2016]

 TEL: 604-575-1244
www.seevirtual360.com

DISCLAIMER:

1. MEASUREMENTS ARE FOR PROMOTIONAL USE ONLY & ARE NOT INTENDED FOR CONSTRUCTION USE.
 2. ROOM DIMENSIONS ARE APPROXIMATE. MEASUREMENTS & CALCULATIONS FOR FINISHED AREAS ARE E&O INSURED.
 3. FINISHED AREAS ARE ENCLOSED AREAS IN A HOUSE THAT ARE SUITABLE FOR YEAR-ROUND USE, EMBODYING WALLS, FLOORS, AND CEILINGS THAT ARE SIMILAR TO THE REST OF THE HOUSE. (ANSI Z765-2003)
 4. THIS FLOOR PLAN MAY ONLY BE REPRODUCED WITH PERMISSION OF THE REALTOR(S) ON THIS FLOOR PLAN.
- * ANY MEASUREMENT WITH AN ASTERISK (*) OR (APPROX) ARE APPROXIMATE AND FOR ILLUSTRATION PURPOSES ONLY AND ARE NOT E&O INSURED.



NORTH

