

**#165 1100 East 29th Street,**  
**North Vancouver, BC**



**KIM TAYLOR**

*Royal LePage Sussex*

Cell: 604-315-2645

Office: 604-926-6011

kim@kimtaylorhomes.com

www.kimtaylorhomes.com

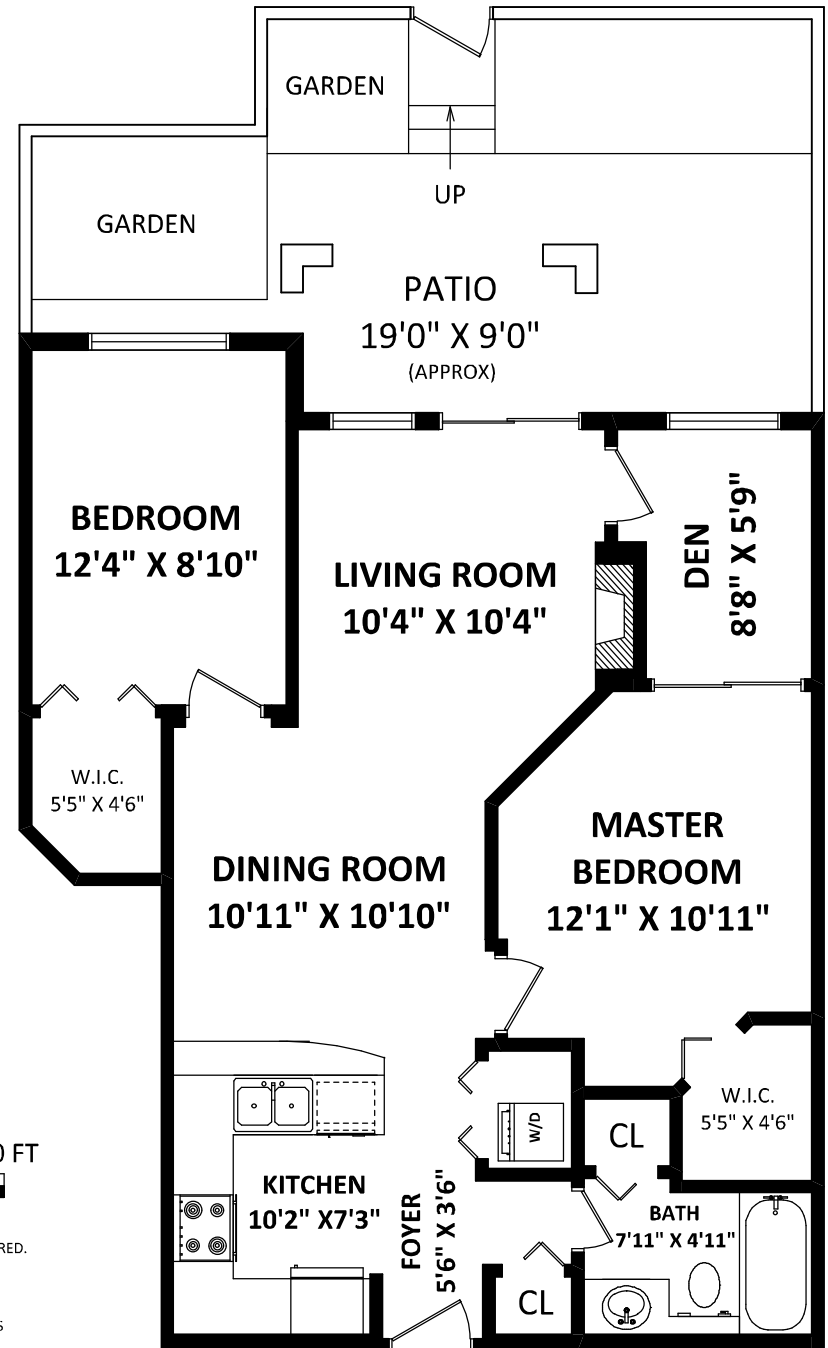
**TOTAL FINISHED AREA: 842 SQ.FT.**

*OTHER AREA(S)*

PATIO w/GARDEN: 322 SQ.FT.\*



GENERAL NOTES:  
 1. MEASUREMENTS ARE FOR PROMOTIONAL USE ONLY & ARE NOT INTENDED FOR CONSTRUCTION USE.  
 ROOM DIMENSIONS ARE APPROXIMATE. MEASUREMENTS & CALCULATIONS FOR FINISHED AREAS ARE E&O INSURED.  
 2. FINISHED AREAS ARE ENCLOSED AREAS IN A HOUSE THAT ARE SUITABLE FOR YEAR-ROUND USE,  
 EMBODYING WALLS, FLOORS, AND CEILINGS THAT ARE SIMILAR TO THE REST OF THE HOUSE. (ANSI Z765-2003)  
 3. THIS FLOOR PLAN MAY ONLY BE REPRODUCED WITH PERMISSION OF THE REALTOR(S) ON THIS FLOOR PLAN.  
 \* ANY MEASUREMENT WITH AN ASTERISK (\*) OR (APPROX) ARE APPROXIMATE AND FOR ILLUSTRATION PURPOSES  
 ONLY AND ARE NOT E&O INSURED.



FLOOR PLAN BY:

[MARCH 2, 2016]



TEL: 604-575-1244

www.seevirtual360.com