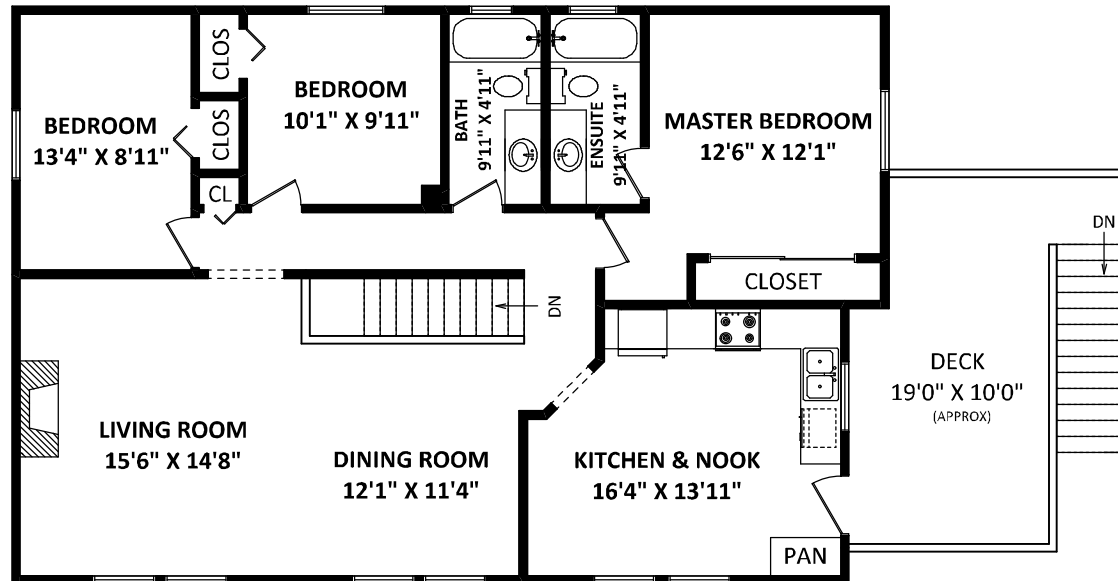
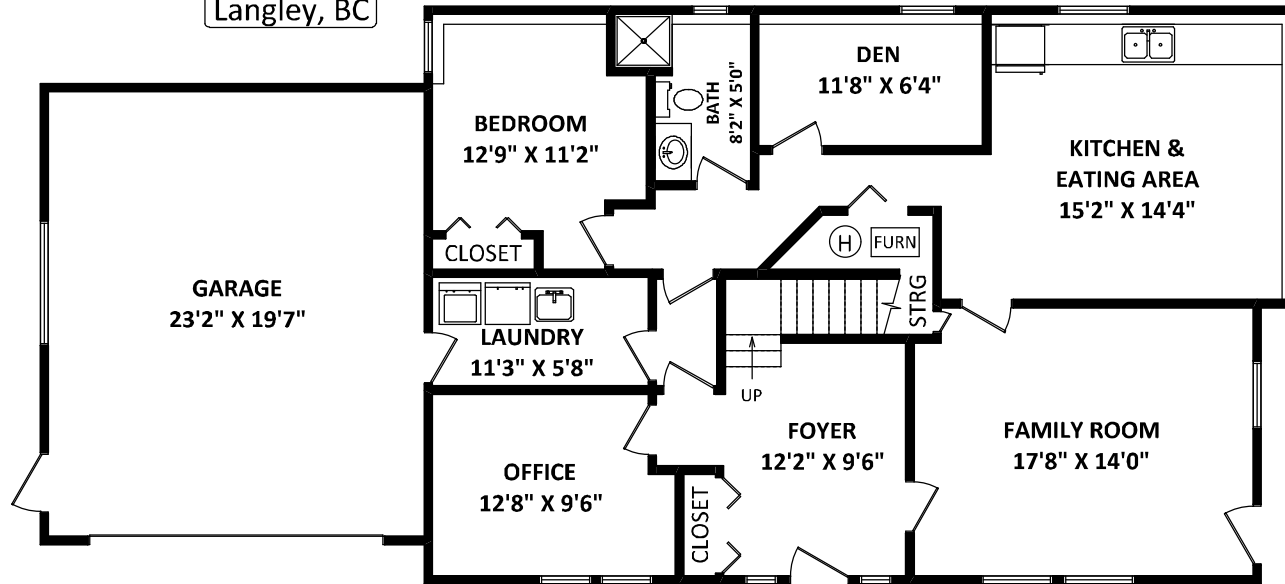


2613 270B Street,
Langley, BC



JANINE MAZZALUPI

Royal LePage Wolstencroft

Phone: 604-530-0231

Cell: 604-514-9667

janine@mazzalupi.ca

www.Mazzalupi.ca

TOTAL FINISHED AREA: 2688 SQ.FT.

OTHER AREA(S)

GARAGE: 480 SQ.FT.

DECK: 200 SQ.FT.*

MAIN FLOOR: 1344 SQ.FT.



GENERAL NOTES:
 1. MEASUREMENTS ARE FOR PROMOTIONAL USE ONLY & ARE NOT INTENDED FOR CONSTRUCTION USE. ROOM DIMENSIONS ARE APPROXIMATE. MEASUREMENTS & CALCULATIONS FOR FINISHED AREAS ARE E&O INSURED.
 2. FINISHED AREAS ARE ENCLOSED AREAS IN A HOUSE THAT ARE SUITABLE FOR YEAR-ROUND USE, EMBODYING WALLS, FLOORS, AND CEILINGS THAT ARE SIMILAR TO THE REST OF THE HOUSE. (ANSI Z765-2003)
 3. THIS FLOOR PLAN MAY ONLY BE REPRODUCED WITH PERMISSION OF THE REALTOR(S) ON THIS FLOOR PLAN.
 * ANY MEASUREMENT WITH AN ASTERISK (*) OR (APPROX) ARE APPROXIMATE AND FOR ILLUSTRATION PURPOSES ONLY AND ARE NOT E&O INSURED.

FLOOR PLAN BY: [MARCH 13, 2015]

 TEL: 604-575-1244
 www.seevirtual360.com