

2726 163A Street,
Surrey, BC



GREG FRASER

HomeLife Benchmark Realty

Phone: 604-531-1111

Cell: 604-209-1899

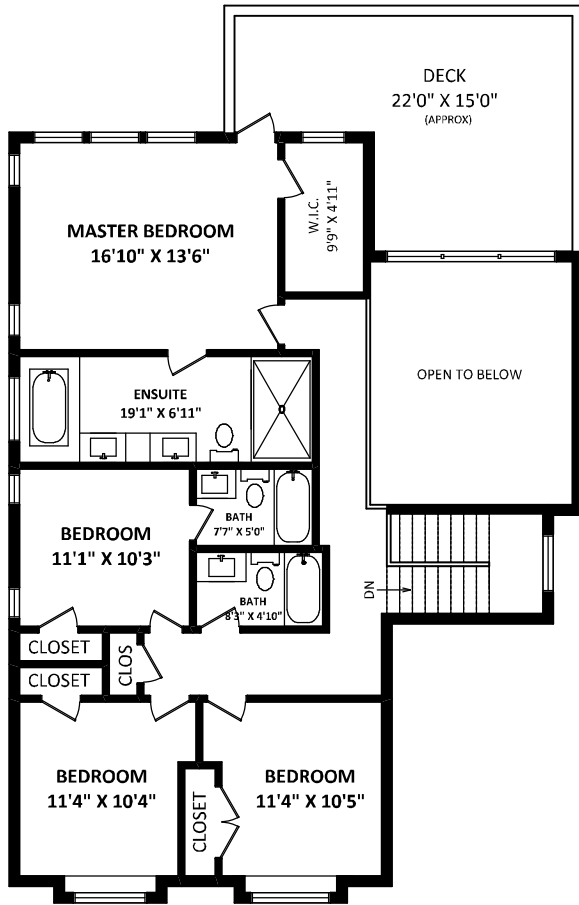
gregfraser@shaw.ca

gregfraser.com

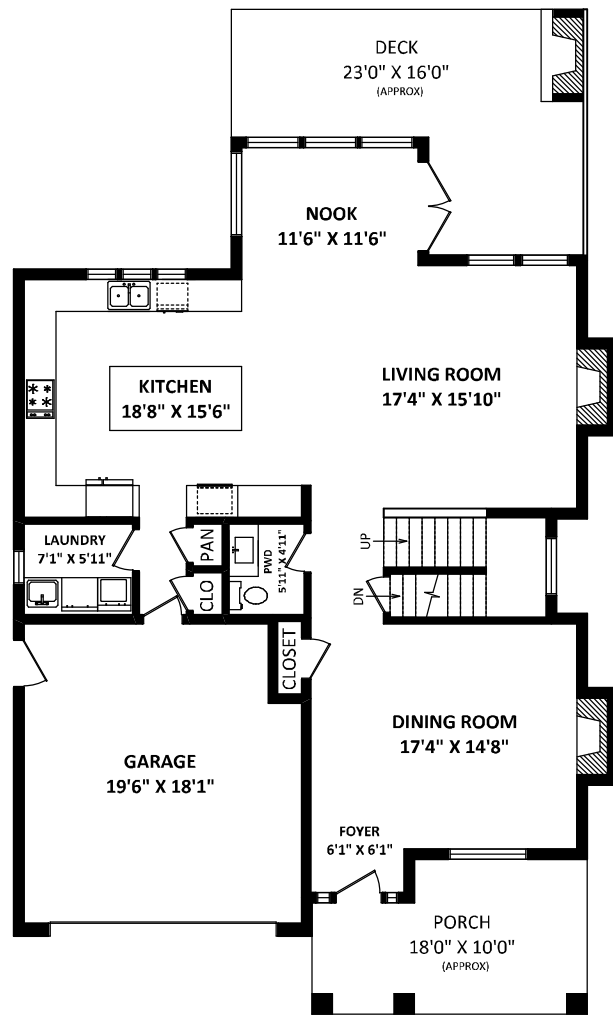
TOTAL FINISHED AREA: 4179 SQ.FT.

OTHER AREA(S)

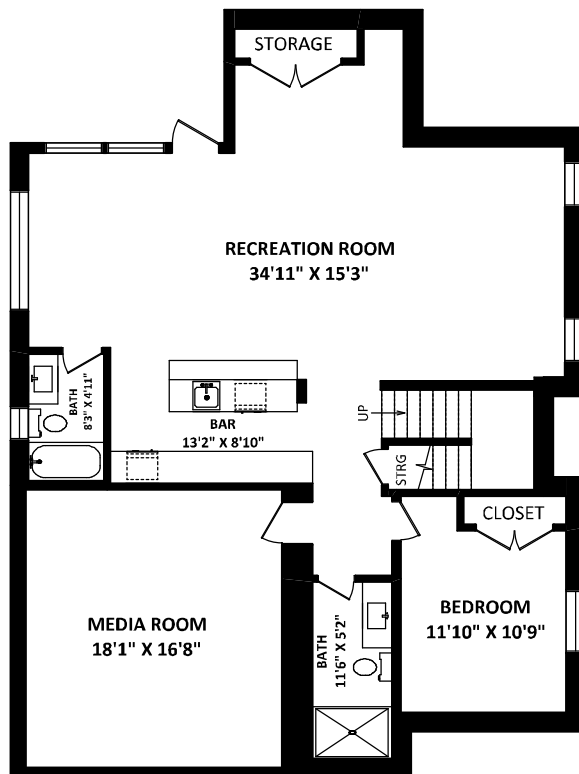
GARAGE:	372 SQ.FT.
PORCH:	162 SQ.FT.*
DECKS:	581 SQ.FT.*



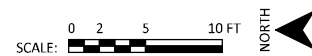
UPPER FLOOR: 1270 SQ.FT.



MAIN FLOOR: 1286 SQ.FT.



LOWER FLOOR: 1623 SQ.FT.



GENERAL NOTES:

1. MEASUREMENTS ARE FOR PROMOTIONAL USE ONLY & ARE NOT INTENDED FOR CONSTRUCTION USE. ROOM DIMENSIONS ARE APPROXIMATE. MEASUREMENTS & CALCULATIONS FOR FINISHED AREAS ARE E&O INSURED FOR 2718 163A STREET, SURREY ONLY. PLEASE CONFIRM MEASUREMENTS, SQUARE FOOTAGE CALCULATIONS AND FLOOR LAYOUT FOR 2726 163A STREET SURREY.
2. FINISHED AREAS ARE ENCLOSED AREAS IN A HOUSE THAT ARE SUITABLE FOR YEAR-AROUND USE.
3. EXISTING WALLS, FLOORS, AND CEILINGS THAT ARE SIMILAR TO THE REST OF THE HOUSE. (ANSI Z765-2003)
3. THIS FLOOR PLAN MAY ONLY BE REPRODUCED WITH PERMISSION OF THE REALTOR(S) ON THIS FLOOR PLAN.
- * ANY MEASUREMENT WITH AN ASTERISK (*) OR (APPROX) ARE APPROXIMATE AND FOR ILLUSTRATION PURPOSES ONLY AND ARE NOT E&O INSURED.

FLOOR PLAN BY:

[APRIL 28, 2014]



TEL: 604-575-1244
www.seevirtual360.com