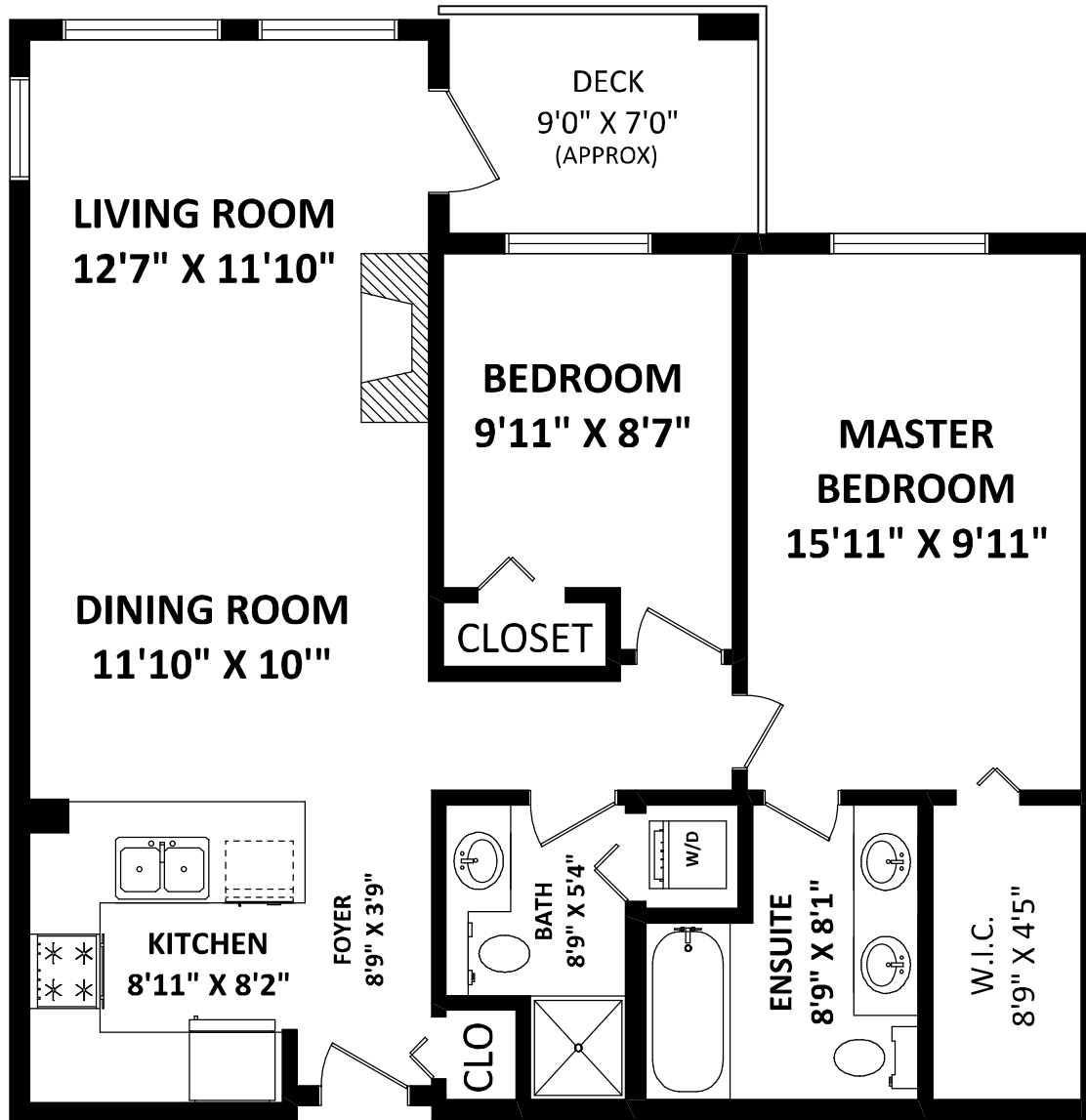


#310 1111 E 27th Street,
North Vancouver, BC



KIM TAYLOR

Royal LePage Northshore

Cell: 604-315-2645

kim@kimtaylorhomes.com

www.kimtaylorhomes.com

TOTAL FINISHED AREA: 900 SQ.FT.

OTHER AREA(S)

DECK: 62 SQ.FT.*

FLOOR PLAN BY:
 [MARCH 26, 2014]

 TEL: 604-575-1244
www.seevirtual360.com

GENERAL NOTES:
 1. MEASUREMENTS ARE FOR PROMOTIONAL USE ONLY & ARE NOT INTENDED FOR CONSTRUCTION USE.
 ROOM DIMENSIONS ARE APPROXIMATE. MEASUREMENTS & CALCULATIONS FOR FINISHED AREAS ARE E&O INSURED.
 2. FINISHED AREAS ARE ENCLOSED AREAS IN A HOUSE THAT ARE SUITABLE FOR YEAR-ROUND USE,
 EMBODYING WALLS, FLOORS, AND CEILINGS THAT ARE SIMILAR TO THE REST OF THE HOUSE. (ANSI Z765-2003)
 3. THIS FLOOR PLAN MAY ONLY BE REPRODUCED WITH PERMISSION OF THE REALTOR(S) ON THIS FLOOR PLAN.
 * ANY MEASUREMENT WITH AN ASTERISK (*) OR (APPROX) ARE APPROXIMATE AND FOR ILLUSTRATION PURPOSES
 ONLY AND ARE NOT E&O INSURED.

