

1220 Dogwood Crescent,  
North Vancouver, BC



**KIM TAYLOR**

*Royal LePage Northshore*

Cell: 604-315-2645

kim@kimtaylorhomes.com

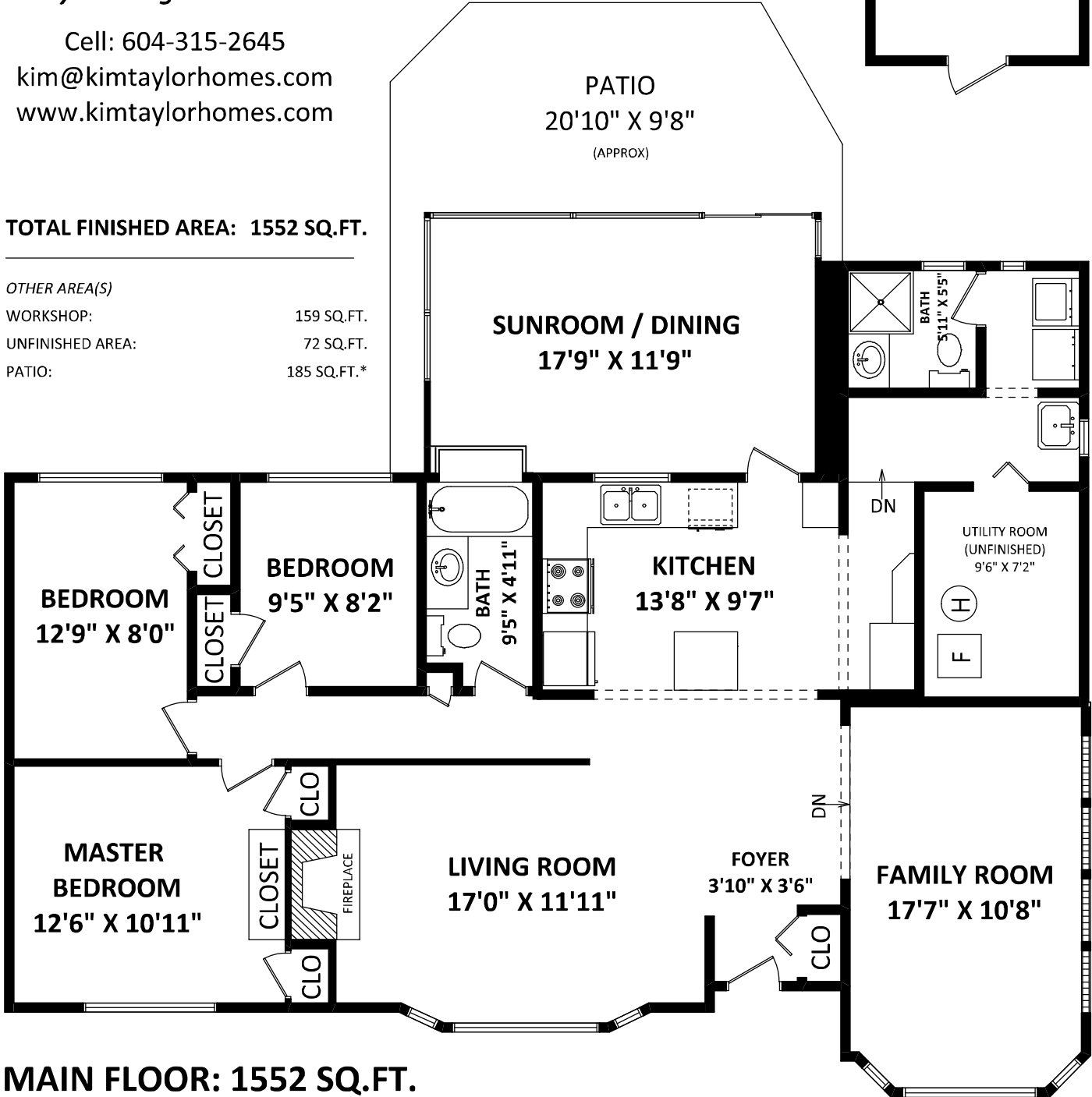
www.kimtaylorhomes.com



**TOTAL FINISHED AREA: 1552 SQ.FT.**

*OTHER AREA(S)*

WORKSHOP:	159 SQ.FT.
UNFINISHED AREA:	72 SQ.FT.
PATIO:	185 SQ.FT.*



**MAIN FLOOR: 1552 SQ.FT.**



**GENERAL NOTES:**

1. MEASUREMENTS ARE FOR PROMOTIONAL USE ONLY & ARE NOT INTENDED FOR CONSTRUCTION USE. ROOM DIMENSIONS ARE APPROXIMATE. MEASUREMENTS & CALCULATIONS FOR FINISHED AREAS ARE E&O INSURED.
  2. FINISHED AREAS ARE ENCLOSED AREAS IN A HOUSE THAT ARE SUITABLE FOR YEAR-ROUND USE, EMBODYING WALLS, FLOORS, AND CEILINGS THAT ARE SIMILAR TO THE REST OF THE HOUSE. (ANSI Z765-2003)
  3. THIS FLOOR PLAN MAY ONLY BE REPRODUCED WITH PERMISSION OF THE REALTOR(S) ON THIS FLOOR PLAN.
- \* ANY MEASUREMENT WITH AN ASTERISK (\*) OR (APPROX) ARE APPROXIMATE AND FOR ILLUSTRATION PURPOSES ONLY AND ARE NOT E&O INSURED.

FLOOR PLAN BY:  
[AUGUST 30, 2013]  
  
TEL: 604-575-1244  
www.seevirtual360.com

