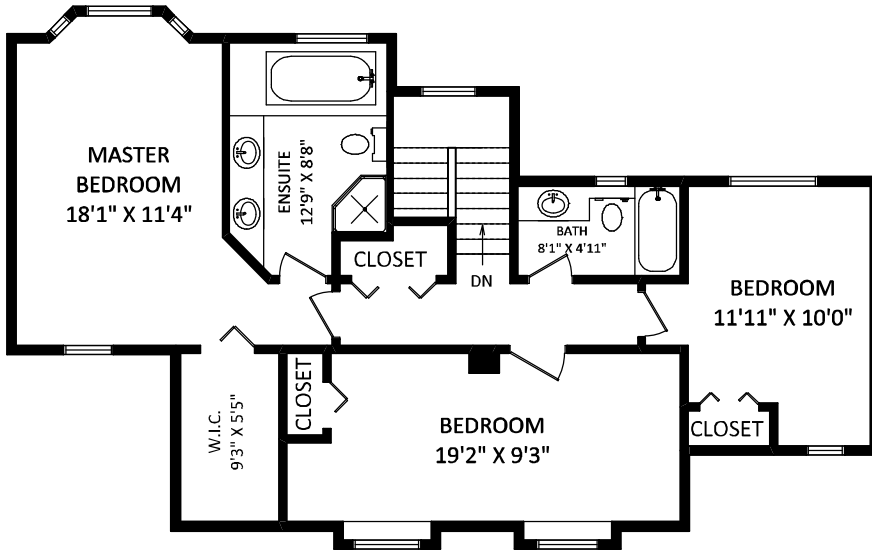


12458 205th Street,
Maple Ridge, BC

ERIC & JULIANA VALLEE



Keller Williams Elite Realty
 Cell-Eric: 604-788-5133
 Cell-Juliana: 778-822-8000
 eric@valleerealestate.ca
 juliana@valleerealestate.ca
 www.valleerealestate.ca

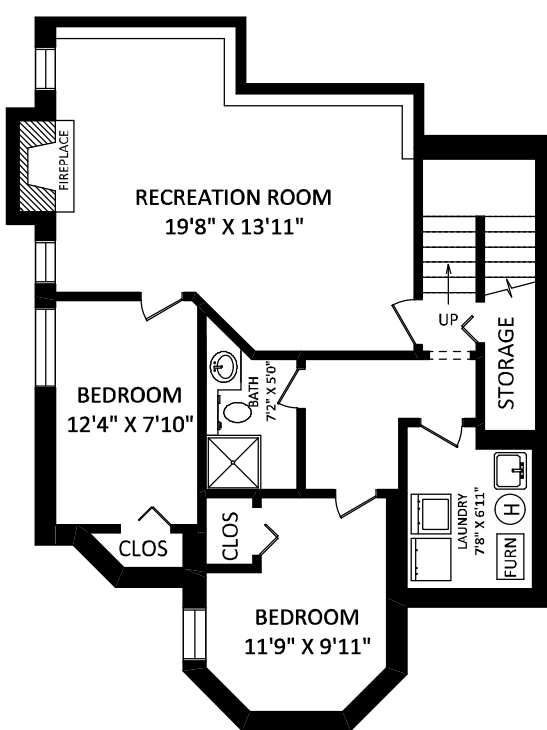


UPPER FLOOR: 1009 SQ.FT.

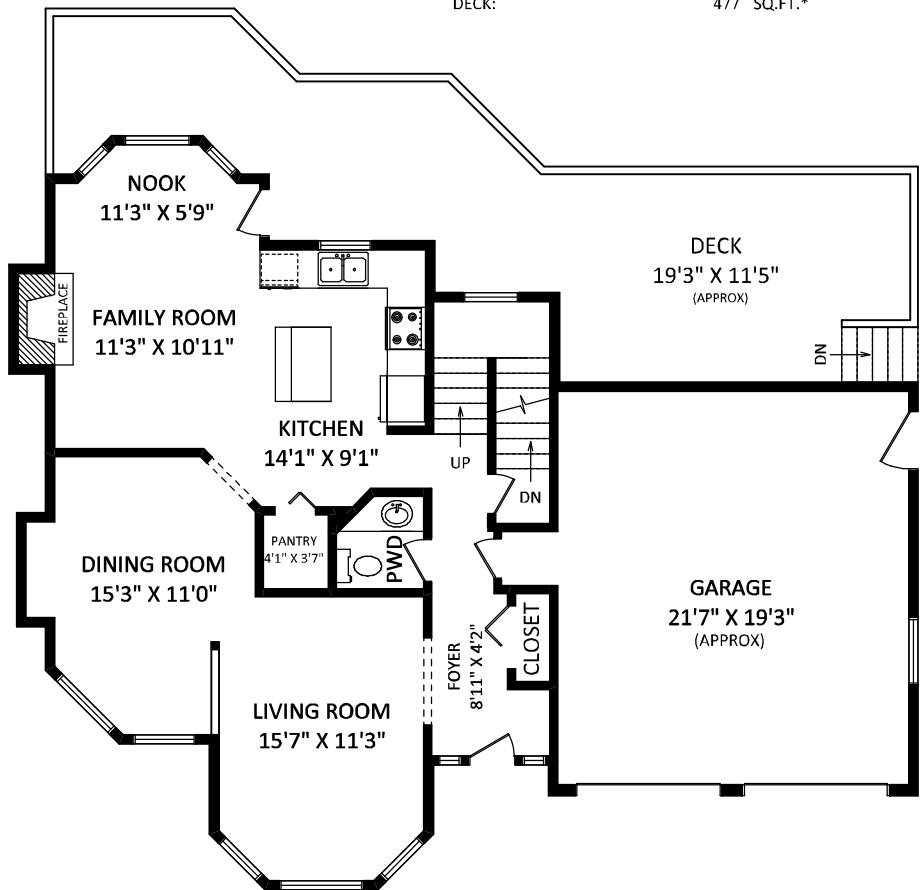
TOTAL FINISHED AREA: 2802 SQ.FT.

OTHER AREA(S)

GARAGE: 458 SQ.FT.
 DECK: 477 SQ.FT.*



LOWER FLOOR: 889 SQ.FT.



MAIN FLOOR: 904 SQ.FT.

GENERAL NOTES:

1. MEASUREMENTS ARE FOR PROMOTIONAL USE ONLY & ARE NOT INTENDED FOR CONSTRUCTION USE. ROOM DIMENSIONS ARE APPROXIMATE. MEASUREMENTS & CALCULATIONS FOR FINISHED AREAS ARE E&O INSURED.
2. FINISHED AREAS ARE ENCLOSED AREAS IN A HOUSE THAT ARE SUITABLE FOR YEAR-ROUND USE.
3. EMBODYING WALLS, FLOORS, AND CEILINGS THAT ARE SIMILAR TO THE REST OF THE HOUSE. (ANSI 2765-2003)
- * ANY MEASUREMENT WITH AN ASTERISK (*) OR (APPROX) ARE APPROXIMATE AND FOR ILLUSTRATION PURPOSES ONLY AND ARE NOT E&O INSURED.

FLOOR PLAN BY:
 [MAY 6, 2013]

 TEL: 604-575-1244
 www.seevirtual360.com

