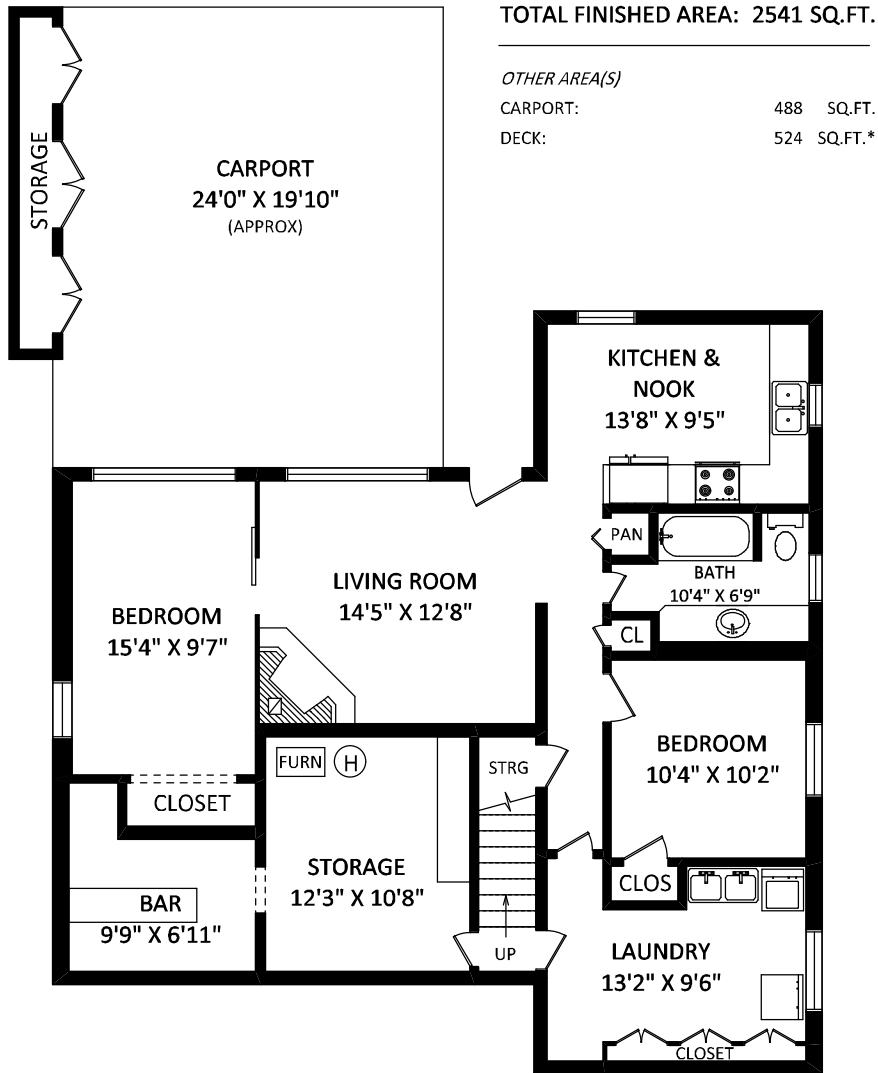


532 Amess Street,  
New Westminster, BC

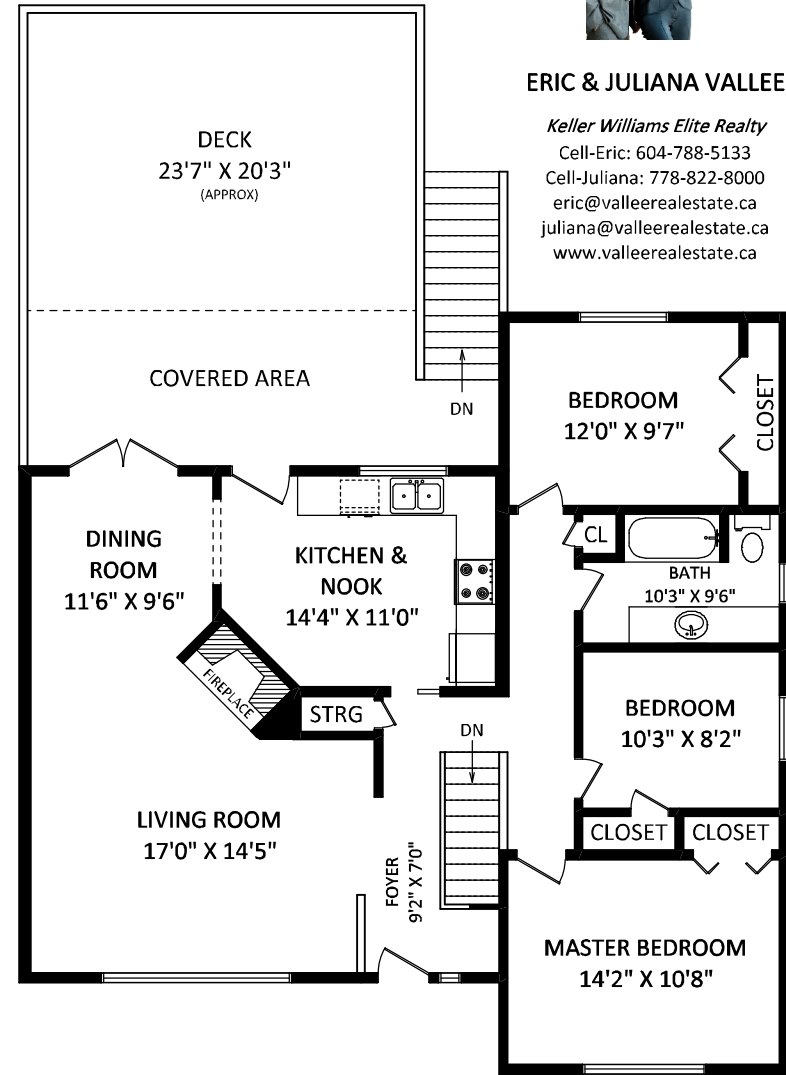


**ERIC & JULIANA VALLEE**

*Keller Williams Elite Realty*  
Cell-Eric: 604-788-5133  
Cell-Juliana: 778-822-8000  
eric@valleerealestate.ca  
juliana@valleerealestate.ca  
www.valleerealestate.ca



**LOWER FLOOR: 1270 SQ.FT.**



**MAIN FLOOR: 1271 SQ.FT.**

FLOOR PLAN BY:

[APRIL 26, 2013]



TEL: 604-575-1244  
www.seevirtual360.com

**GENERAL NOTES:**

1. MEASUREMENTS ARE FOR PROMOTIONAL USE ONLY & ARE NOT INTENDED FOR CONSTRUCTION USE. ROOM DIMENSIONS ARE APPROXIMATE. MEASUREMENTS & CALCULATIONS FOR FINISHED AREAS ARE E&O INSURED.
2. FINISHED AREAS ARE ENCLOSED AREAS IN A HOUSE THAT ARE SUITABLE FOR YEAR-ROUND USE, EMBODYING WALLS, FLOORS, AND CEILINGS THAT ARE SIMILAR TO THE REST OF THE HOUSE. (ANSI 2765-2003)
3. THIS FLOOR PLAN MAY ONLY BE REPRODUCED WITH PERMISSION OF THE REALTOR(S) ON THIS FLOOR PLAN. \* ANY MEASUREMENT WITH AN ASTERISK (\*) OR (APPROX) ARE APPROXIMATE AND FOR ILLUSTRATION PURPOSES ONLY AND ARE NOT E&O INSURED.

