



#324 1185 Pacific Street,  
Coquitlam, BC

**TOTAL FINISHED AREA:  
827 SQ.FT.**

**ERIC & JULIANA VALLEE**

*Keller Williams Elite Realty*

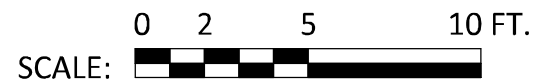
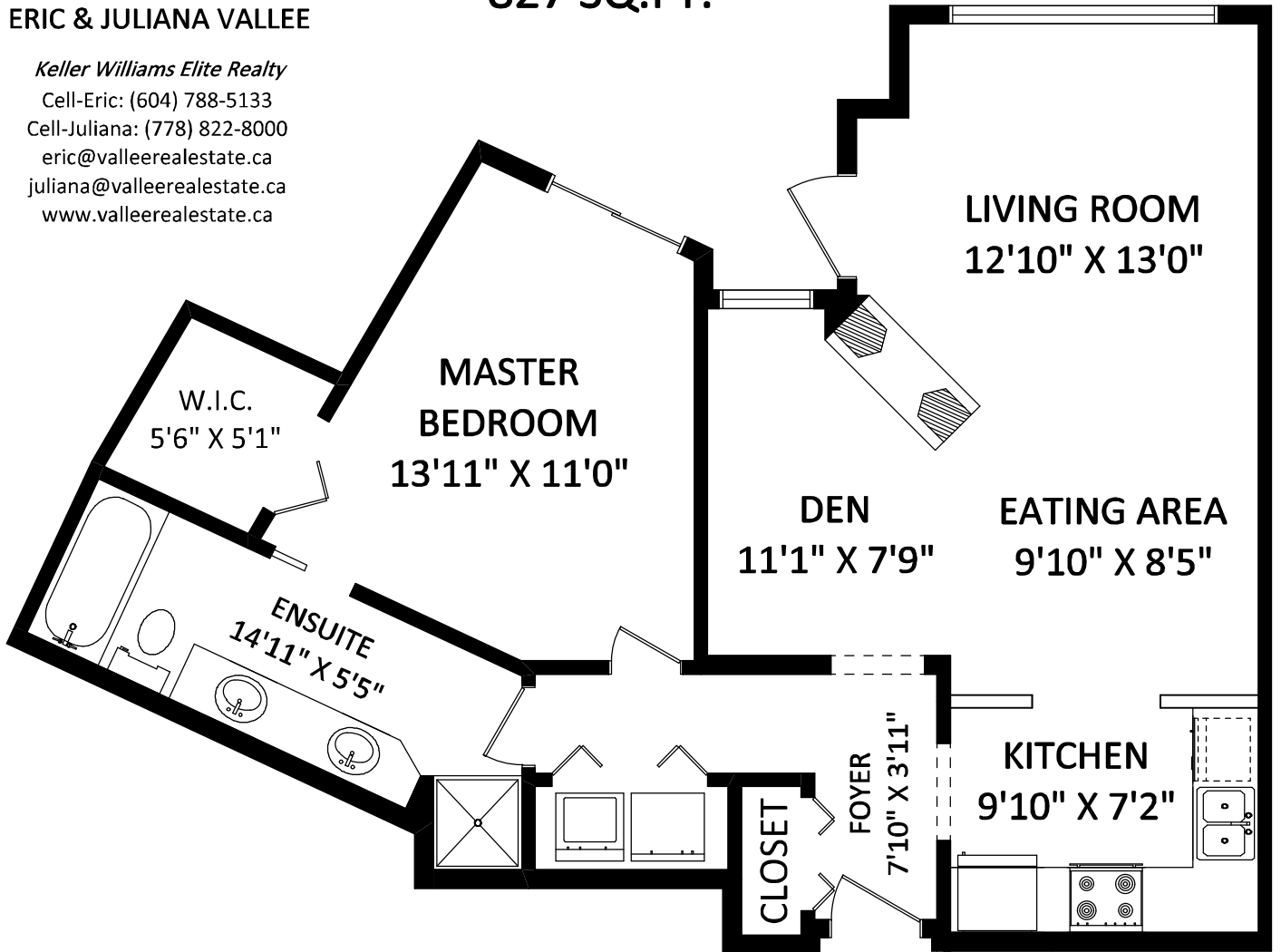
Cell-Eric: (604) 788-5133

Cell-Juliana: (778) 822-8000

eric@valleerealestate.ca

juliana@valleerealestate.ca

www.valleerealestate.ca



FLOOR PLAN BY:

[JANUARY 2, 2013]



TEL: (604) 575-1244

www.seevirtual360.com

**GENERAL NOTES:**

1. MEASUREMENTS ARE FOR PROMOTIONAL USE ONLY & IS NOT INTENDED FOR CONSTRUCTION USE. ROOM SIZES SHOULD BE CONSIDERED APPROXIMATE. MEASUREMENTS & CALCULATIONS ARE E&O INSURED.
2. TOTAL FINISHED AREA IS AN ENCLOSED AREA IN A HOUSE THAT IS SUITABLE FOR YEAR-ROUND USE, EMBODYING WALLS, FLOORS, AND CEILINGS THAT ARE SIMILAR TO THE REST OF THE HOUSE. (ANSI)
3. THIS FLOOR PLAN MAY ONLY BE REPRODUCED WITH PERMISSION OF THE REALTOR ON THIS FLOOR PLAN.