



PHIL LeGREE

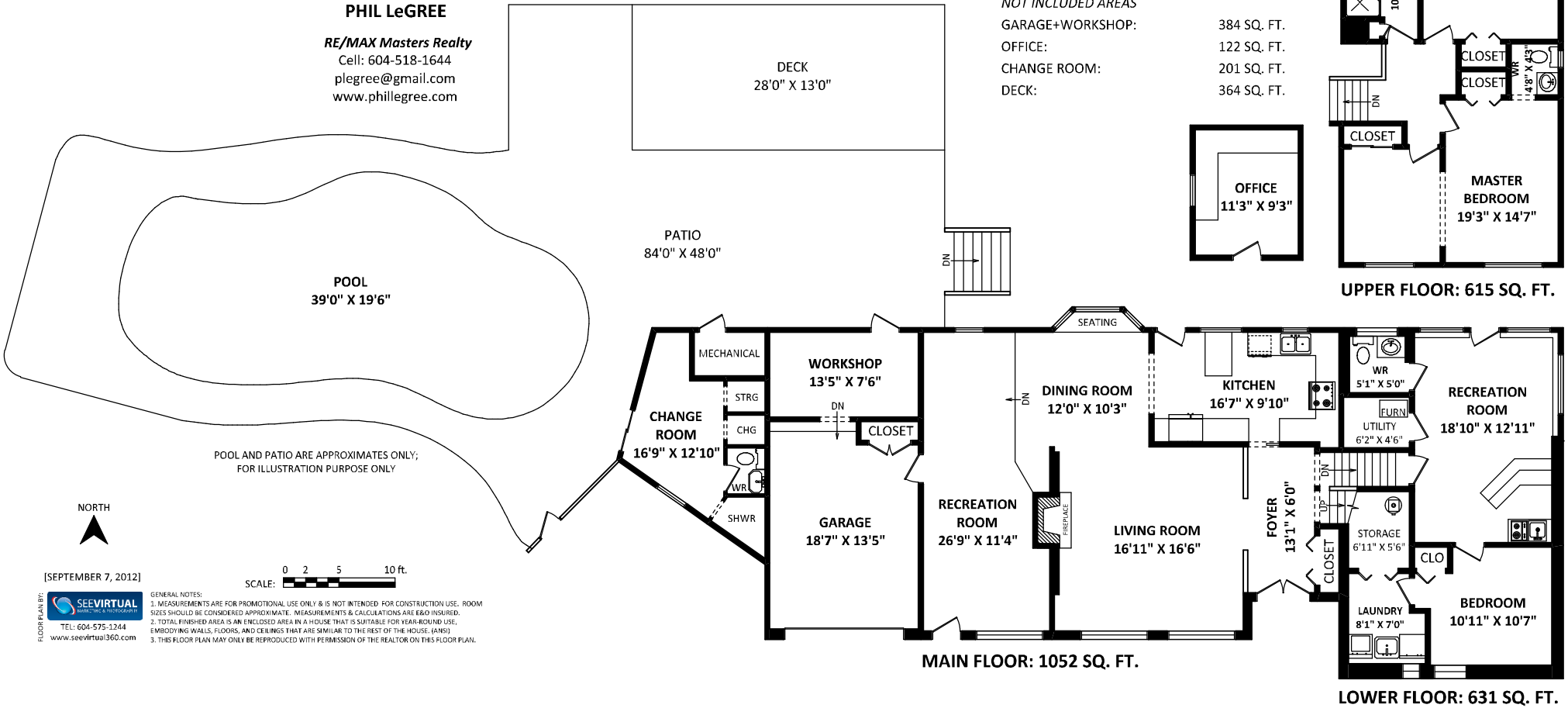
RE/MAX Masters Realty
 Cell: 604-518-1644
 plegree@gmail.com
 www.phillegree.com

695 Burley Drive,
 West Vancouver, BC

TOTAL USABLE AREA: 2298 SQ. FT.

NOT INCLUDED AREAS

GARAGE+WORKSHOP:	384 SQ. FT.
OFFICE:	122 SQ. FT.
CHANGE ROOM:	201 SQ. FT.
DECK:	364 SQ. FT.



POOL AND PATIO ARE APPROXIMATES ONLY;
 FOR ILLUSTRATION PURPOSE ONLY



[SEPTEMBER 7, 2012]

SCALE: 0 2 5 10 ft.

FLOOR PLAN BY:
SEE VIRTUAL REALTY
 TEL: 604-575-1244
 www.seevirtual360.com

GENERAL NOTES:
 1. MEASUREMENTS ARE FOR PROMOTIONAL USE ONLY & IS NOT INTENDED FOR CONSTRUCTION USE. ROOM SIZES SHOULD BE CONSIDERED APPROXIMATE. MEASUREMENTS & CALCULATIONS ARE E&O INSURED.
 2. TOTAL FINISHED AREA IS AN ENCLOSED AREA IN A HOUSE THAT IS SUITABLE FOR YEAR-ROUND USE, EMBODYING WALLS, FLOORS, AND CEILINGS THAT ARE SIMILAR TO THE REST OF THE HOUSE. (ANSI)
 3. THIS FLOOR PLAN MAY ONLY BE REPRODUCED WITH PERMISSION OF THE REALTOR ON THIS FLOOR PLAN.

MAIN FLOOR: 1052 SQ. FT.

UPPER FLOOR: 615 SQ. FT.

LOWER FLOOR: 631 SQ. FT.