



PHIL LeGREE

RE/MAX Masters Realty

Cell: (604) 518 - 1644

plegree@gmail.com

www.phillegree.com

NORTHWEST
HORSESHOE BAY

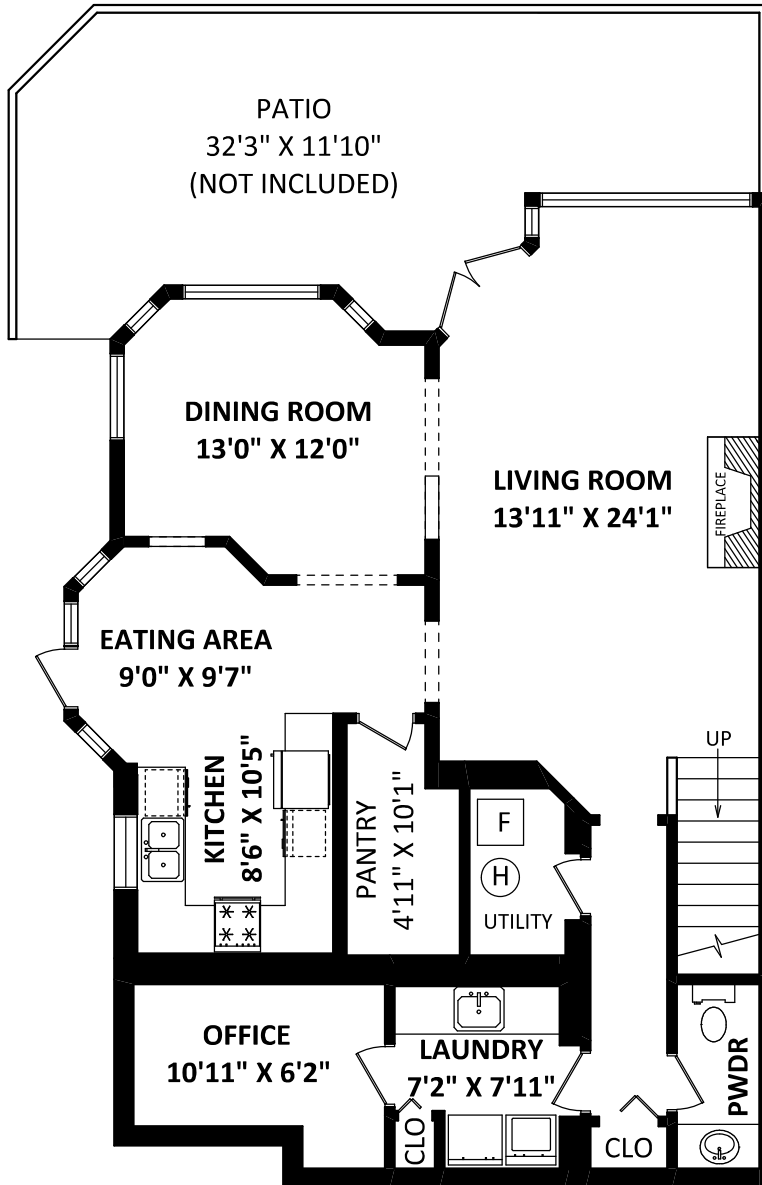
5286 Timberfeild Road,
West Vancouver, BC

TOTAL USABLE AREA: 1926 SQ. FT.

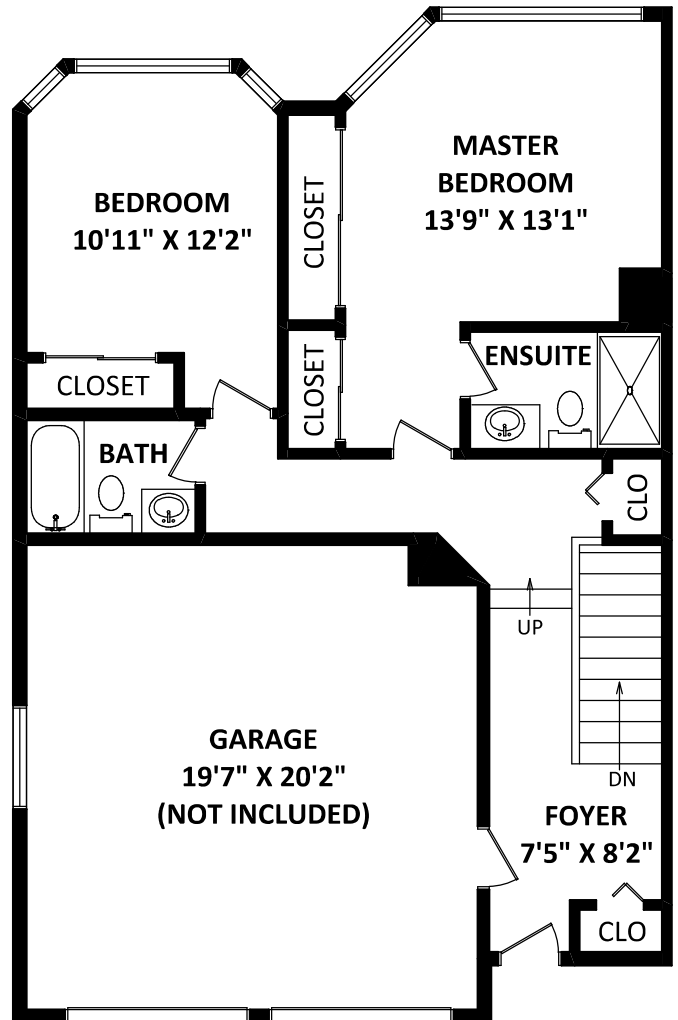
NOT INCLUDED AREAS

GARAGE: 418 SQ. FT.

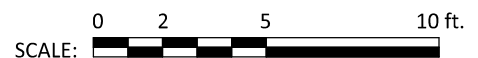
PATIO: 371 SQ. FT.



MAIN FLOOR: 1152 SQ. FT.



UPPER FLOOR: 774 SQ. FT.



MEASUREMENTS ARE FOR PROMOTIONAL USE ONLY
AND IS NOT INTENDED FOR CONSTRUCTION USE.
ROOM SIZES SHOULD BE CONSIDERED APPROXIMATE.
MEASUREMENTS & CALCULATIONS ARE E&O INSURED.

FLOOR PLAN BY:
SEEVIRTUAL
[FEBRUARY 1, 2011]