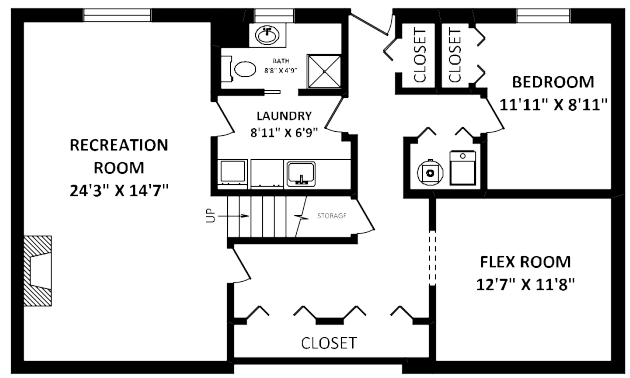
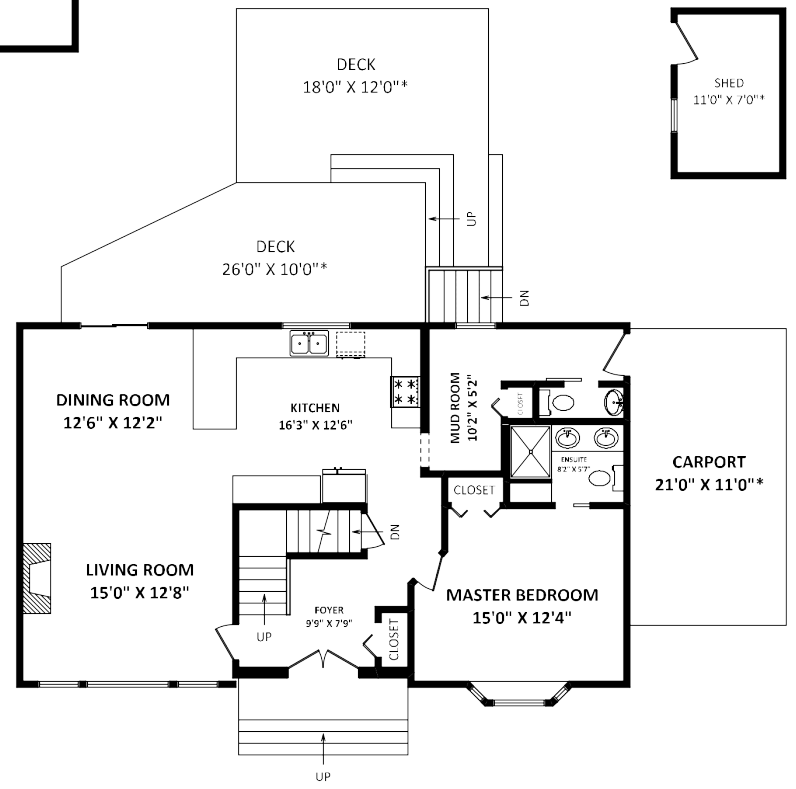


UPPER FLOOR: 938 SQ.FT.**
 **EXCLUDES ROOF STORAGE

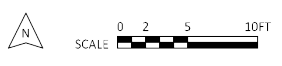


LOWER FLOOR: 1129 SQ.FT.



MAIN FLOOR: 1129 SQ.FT.

TOTAL FINISHED AREA: 3196 SQ.FT.
 OTHER AREA(S)
 CARPORT: 231 SQ.FT.*
 DECKS: 475 SQ.FT.*
 SHED: 100 SQ.FT.*



34795 ARDEN DRIVE, ABBOTSFORD

Beautiful two storey plus full basement in the sought after Ten Oaks neighborhood. This Tudor style home is gorgeous. Open floor plan concept. Beautifully remodeled and updated two level plus full basement with separate entrance. New hardwood floors, roof, windows, furnace, custom built-ins and so much more. The lot is perfectly level and useable, almost 12,000 sq ft.. Looking for something outside of the box with character? Quiet cul-de-sac with lots of trees for privacy, massive back yard with room for shop/ garage? House big enough for large families that like to entertain in style. Close to all levels of school, shopping and freeway. Unauthorized suite potential down. Ideal secluded location. Peace and quiet, enjoy!



Stan Sturwold
 Sutton WestCoast Realty
 2790 Allwood Street, Abbotsford, BC, V2T 3R7
 www.livingwestcoast.ca
 604-855-2122



Jeet Thatarwal
 Sutton WestCoast Realty
 2790 Allwood Street, Abbotsford, BC, V2T 3R7
 www.sutton.com
 778-241-8000

Please contact Stan Sturwold at 604-855-2122 for specifications.
 This communication is not intended to cause or induce breach of an existing agency agreement.





34795 ARDEN DRIVE, ABBOTSFORD

DETAILS:

Bedrooms:	5
Bathrooms:	4
Size:	3,196 ft. ²
Year Built:	1972
Type:	Detached
Style:	2 Storey w/Bsmt
Frontage:	75 ft.
Lot Area:	11,925 ft. ²

