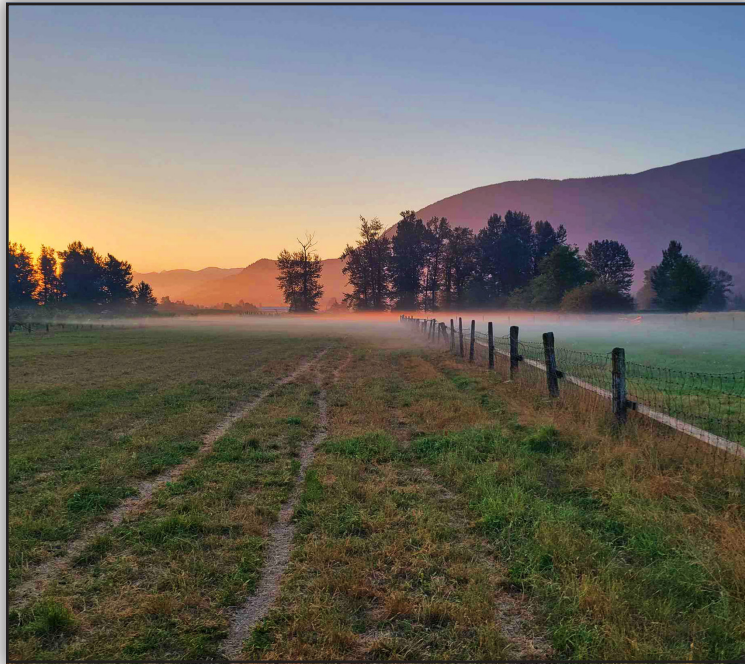


4130 BOUNDARY ROAD – CHILLIWACK



4130 BOUNDARY ROAD – CHILLIWACK



Features

<i>Bedrooms:</i>	4	<i>Style of Home:</i>	2 Storey
<i>Bathrooms:</i>	2	<i>Year Built:</i>	1947
<i>Size:</i>	2,630 ft. ²	<i>Taxes:</i>	\$1,809.18

Jim Dyck

RE/MAX Little Oak Realty

1-800-668-8661 604-859-2341

jim@jimdyck.com www.jimdyck.com

Each office independently owned and operated



Please contact Jim Dyck for specifications: 604-859-2341

This communication is not intended to cause or induce breach of an existing agency agreement.





Welcome home! Take a look at this 2 storey home situated on a picturesque 5 acre property. Located in the scenic community of Yarrow this 2630 sq ft home has 4 bedrooms plus an office and 2 bathrooms. The main floor features a spacious living room with woodstove, dining room, eating area, country kitchen, master suite with 5 pc ensuite, and main bathroom. Upstairs there is room for the family with 3 more bedrooms. This home had an addition and full renovation in 1988 and is situated on a private 5 acre parcel, fenced and cross fenced, with a classic red hip roofed barn and more outbuildings including 4 horse stalls. Perfect for your farm, room to park your toys, and includes covered RV parking and sani dump. Check out the floorplan and photo tour and call today to view this home!

