

Welcome to...



24318 102B AVENUE
MAPLE RIDGE

Richard Alexander
778-389-2164

rick@rickalex.ca | www.rickalex.ca



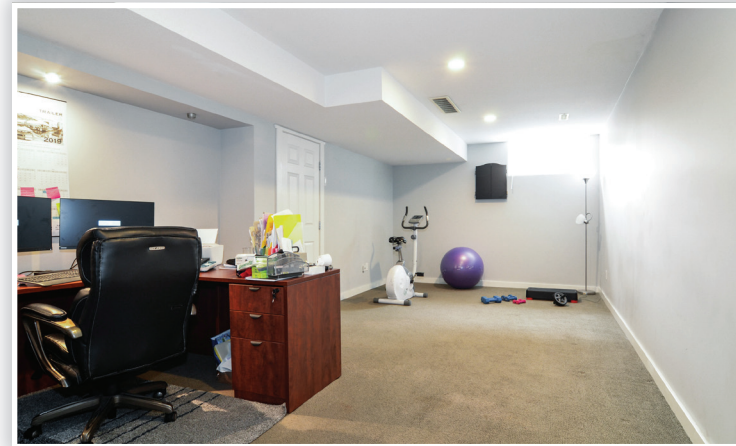
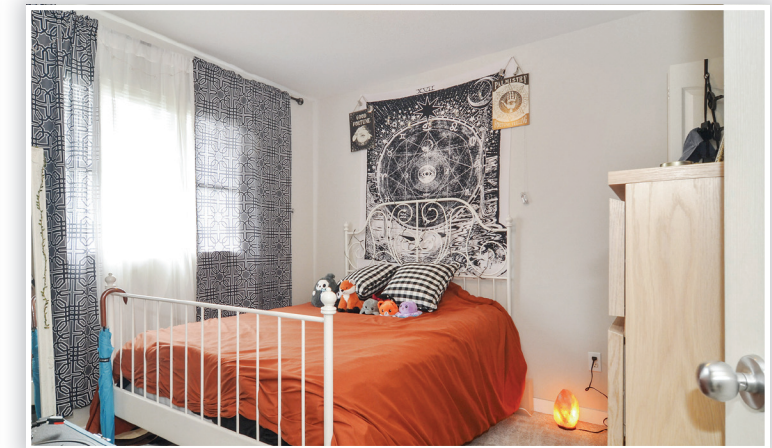
This floor plan is for marketing purposes only.



Please contact Richard Alexander, 778-389-2164, for specifications.

This communication is not intended to cause or induce breach of an existing agency agreement.



Macdonald Realty Burnaby Branch
201 - 5501 Kingsway
Burnaby, BC V5H 2G3



Details		Description
 3	Property Style:	Single Family
 3	Type of Dwelling:	House
	Year Built:	2002
	Size:	2,156 sq. ft.
	Lot Size:	2,346 sq. ft.
	Taxes (2021):	\$4,264.33

Quiet side street, close to parks and schools; is a safe place to call home. This three floor house has a fenced yard with a wooden shed. The front porch gives you a covered sitting area to relax with friends and family. Three bedrooms with a den offers you room to grow. The large lower floor is fully finished and ready for your plans. Thank you, have a good day.

