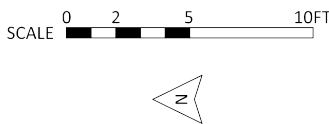
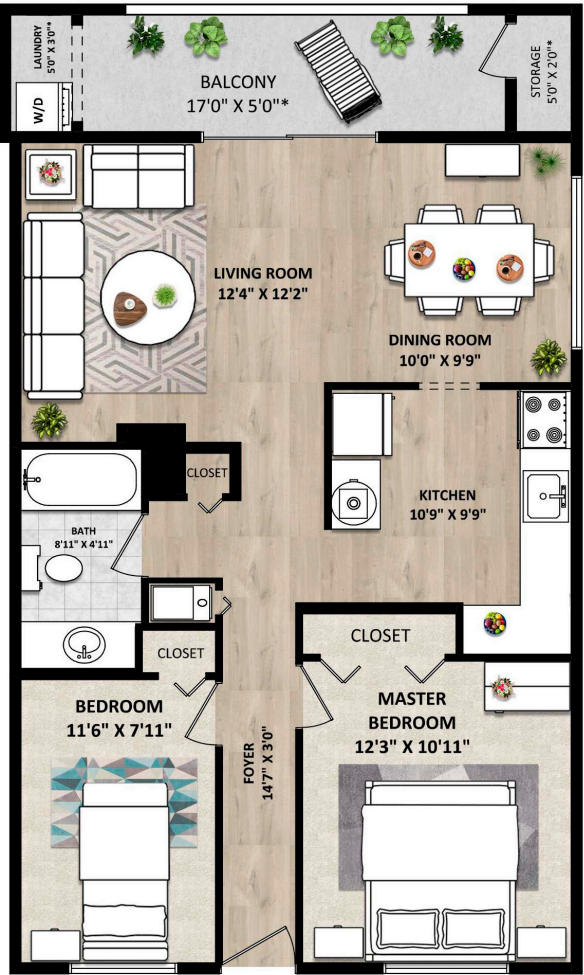


1015 Clarke Road – Port Moody

TOTAL FINISHED AREA: 780 SQ.FT.

OTHER AREA(S)	
LAUNDRY:	17 SQ.FT.*
STORAGE:	16 SQ.FT.*
BALCONY:	90 SQ.FT.*



Features

Bedrooms:	2
Bathrooms:	1
Size:	780 ft. ²
Style of Home:	Corner Unit
Year Built:	1969
Taxes:	\$1,213.28
Maint. Fee:	\$279.40



1015 Clarke Road – Port Moody

\$499,000



Thinking about Selling Your Home?

Questions?
AskBob.ca

Bob
CHARBONNEAU
Trusted Strategies for Today's Market

604.340.1747



Please contact Bob Charbonneau, 604-340-1747, for specifications.

This communication is not intended to cause or induce breach of an existing agency agreement.





View of North Shore Mountains from this lovely and exceptionally priced, 2 bedroom townhouse. The spacious floorplan of this unique unit has updated oversized thermal windows that let in plenty of light. Tiled floors in kitchen and bath. Roomy kitchen offers plenty of cupboards. Floors are carpeted, insuite laundry and a gas furnace. Large balcony overlooks the fantastic view of the mountains and the park like common area. This building has been well maintained, resurfaced decks, stucco cladding has been redone. First time this home has been available in 25 years. Fabulous central location in desirable Port Moody.

