

608 - 188 Keefer Place • Vancouver



Joanne Beeson | 604-753-7400
www.joannebeeson.com

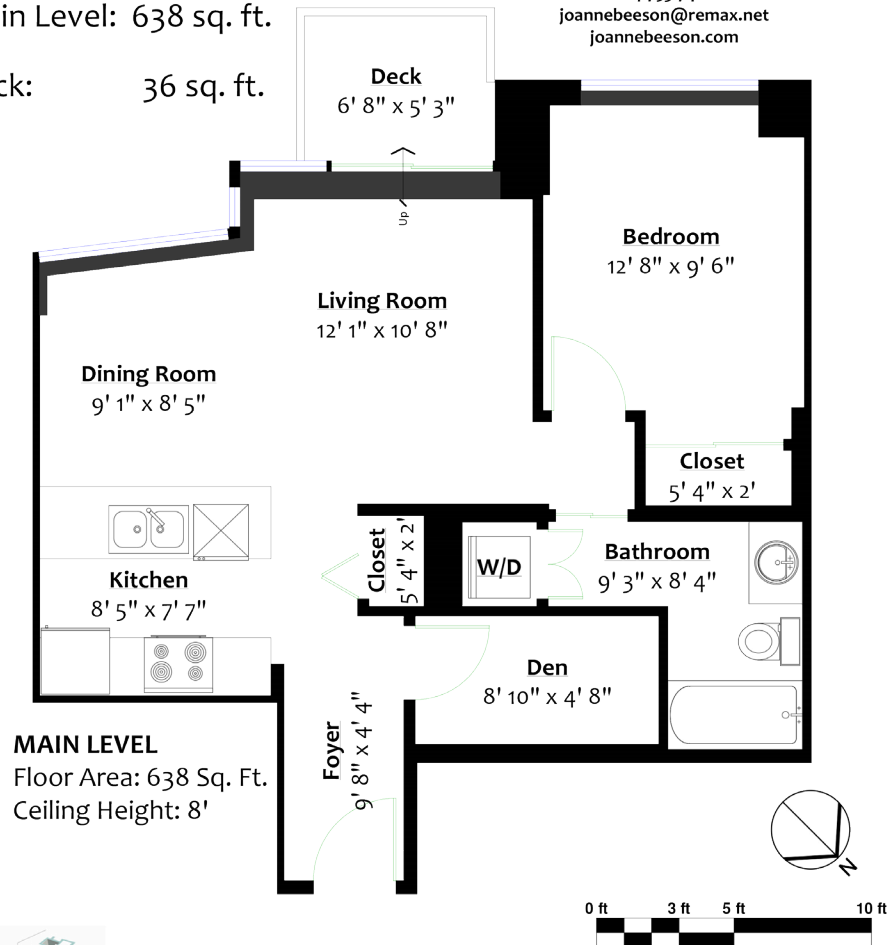
Totals**

Main Level: 638 sq. ft.

Deck: 36 sq. ft.



Joanne Beeson, J.D.
RE/MAX Colonial Pacific Realty Ltd.
604-753-7400
joannebeeson@remax.net
joannebeeson.com



MAIN LEVEL
Floor Area: 638 Sq. Ft.
Ceiling Height: 8'



** While all reasonable attempts have been made to ensure accuracy and the square footage and room dimensions are believed to be correct to ANSI Standards, due to the possibility of human error the information cannot be guaranteed. E&O Insured for \$1,000,000



608 - 188 Keefer Place • Vancouver



This version of the floor plan is for marketing purposes only.

Please contact Joanne Beeson, 604-753-7400, for specifications.

This communication is not intended to cause or induce breach of an existing agency agreement.



RE/MAX Colonial Pacific Realty 15414-24th Avenue, White Rock, BC V4A 2J3 Tel. 604-541-4888



Details

 **1**
 **1**

Property Type: Apartment
 Year Built: 2009
 Living Area: 638 sq. ft.
 Style: 1 Bedroom + Den

