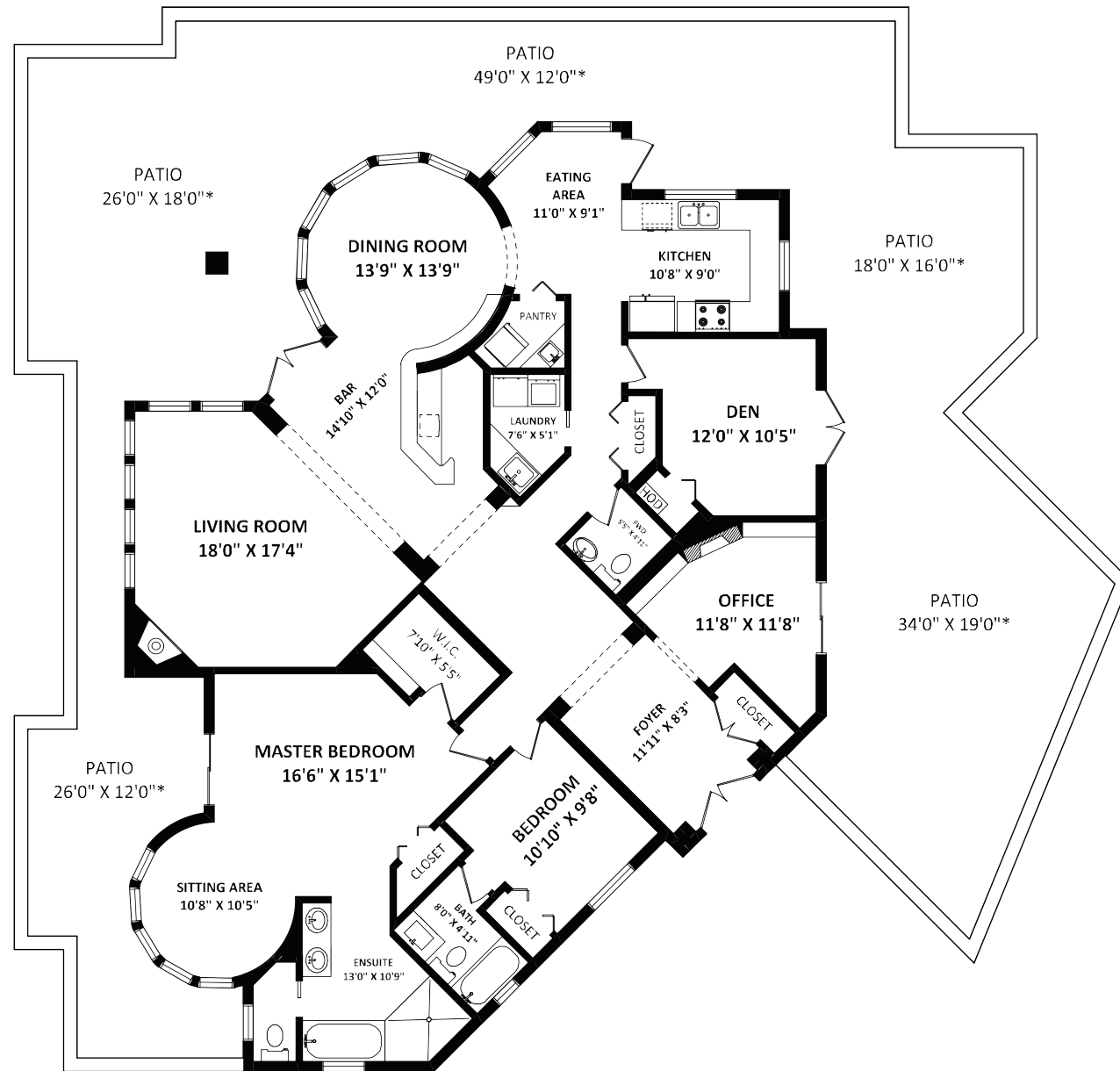


401 - 20448 PARK AVENUE – LANGLEY



TOTAL FINISHED AREA: 2185 SQ.FT.

OTHER AREA(S)
PATIO: 2057 SQ.FT.*



Features

Bedrooms:	3	Style of Home:	Penthouse
Bathrooms:	3	Year Built:	1996
Size:	2,105 ft. ²	Taxes:	\$4,248.19 (2021)
Maintenance Fee:	\$817.00	Parking:	4 Underground



401 - 20448 PARK AVENUE – LANGLEY



Jim Dyck

RE/MAX Little Oak Realty

1-800-668-8661 604-859-2341

jim@jimdyck.com www.jimdyck.com

Each office independently owned and operated



Please contact Jim Dyck for specifications: 604-859-2341

This communication is not intended to cause or induce breach of an existing agency agreement.





Come home to James Court overlooking Douglas Park. This executive Penthouse features 2 bedrooms, 2.5 bathrooms, den, & office in 2185 sqft. Previously the builder's own home, it's been professionally renovated to the most discerning tastes. This suite shares no walls, offering privacy, panoramic views, and over 2000 sqft of balcony. There are many quality features including, 9 and 10' ceilings, 2 gas fireplaces, expansive windows, hardwood flooring, 2 ensuites, wetbar, 13' dining room ceiling, and much more. The master bedroom includes a lounge, spa-like ensuite, and walk in closet. The kitchen has white cabinetry, stainless appliances, and granite counters. 4 parking stalls in a pet friendly 19+ building only 1 block from the planned skytrain station. Check out the 3d tour & call today.

