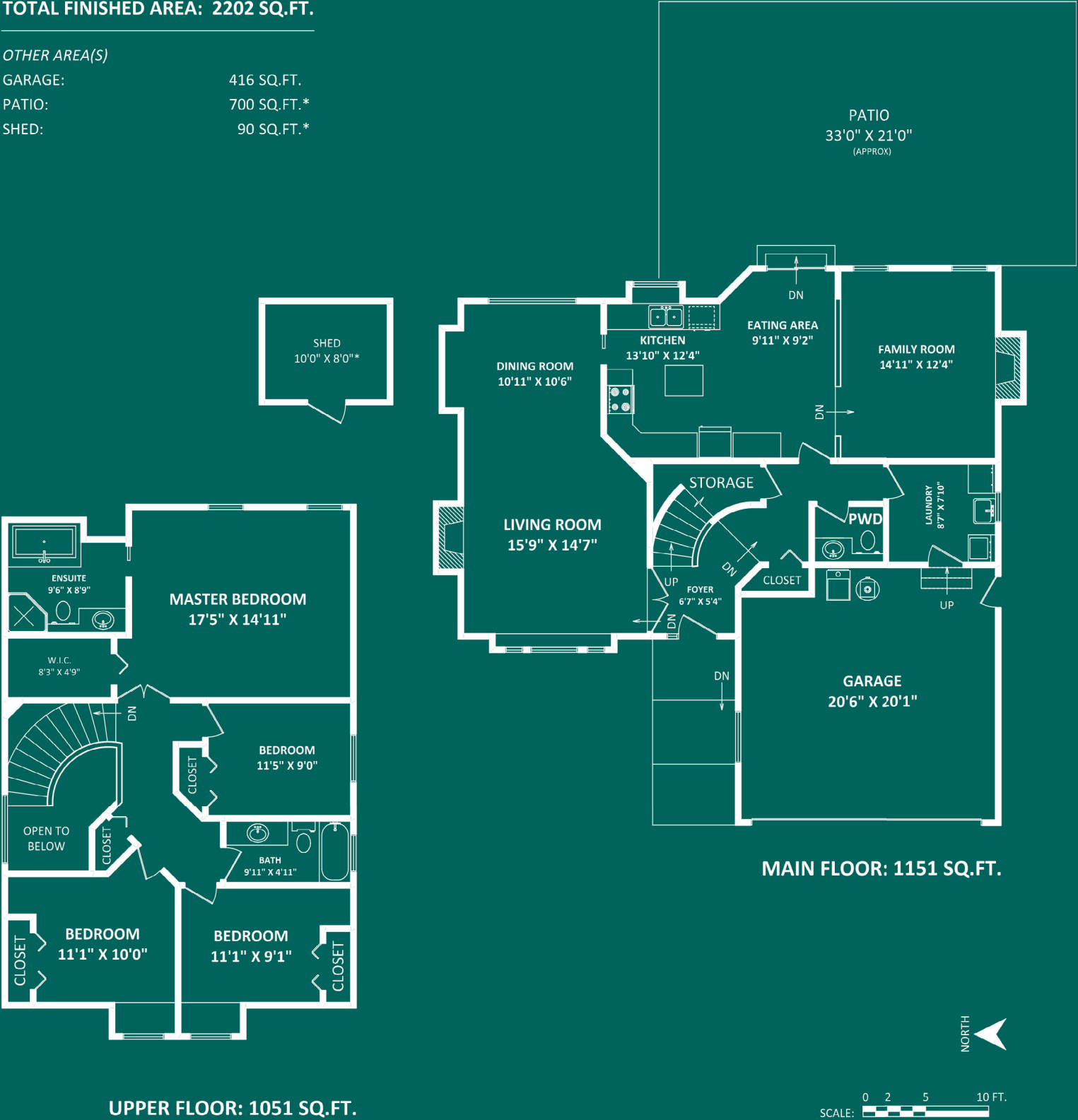


TOTAL FINISHED AREA: 2202 SQ.FT.

OTHER AREA(S)

GARAGE:	416 SQ.FT.
PATIO:	700 SQ.FT.*
SHED:	90 SQ.FT.*



Welcome To
3302 Oxford Place, Coquitlam
Such A Great Neighborhood!



Lower Mainland
Living



Visit lowermainlandliving.com

True Local Realtors



Dan Bennett
ASSOCIATE BROKER
604.250.5227

Sue Bennett
REPRESENTATIVE
604.250.4424

This version of the floorplan is for marketing purposes only.
Please contact Dan or Sue for specifications.

This publication is not intended to cause or induce breach of an existing agency agreement.





3302 Oxford Place, Coquitlam

Park Ridge Estates, such a great neighborhood that properties rarely come on the market. A lovely 2 storey with living on the main and 4 bedrooms up - good for a family plus work from home. New roof and gutters.....Great, family sized back yard, fenced with a 700 sq ft paver patio and storage shed. Minutes to fabulous recreation facilities and shopping.



Style	2 Storey
Type	Detached
Year Built	1989
Bedrooms	4
Bathrooms	3
Size	2202 Ft. ²
Lot	6040 Ft. ²
Frontage	15 Ft.
Taxes	\$4542.71