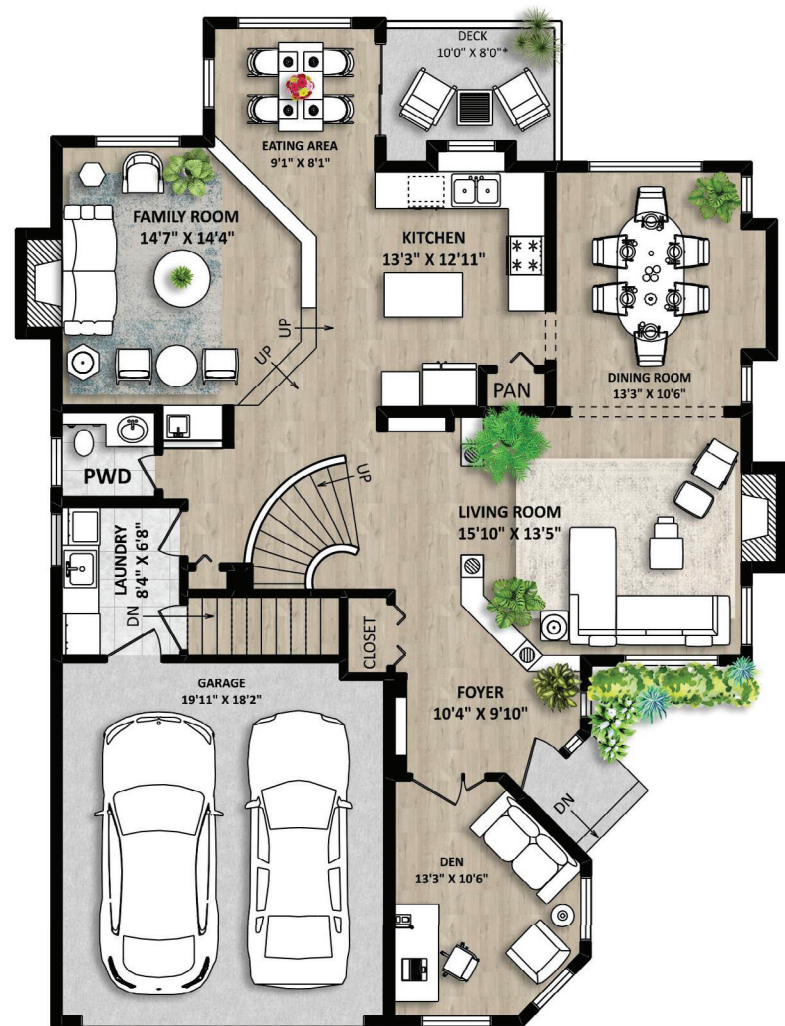


TOTAL FINISHED AREA: 2866 SQ.FT.

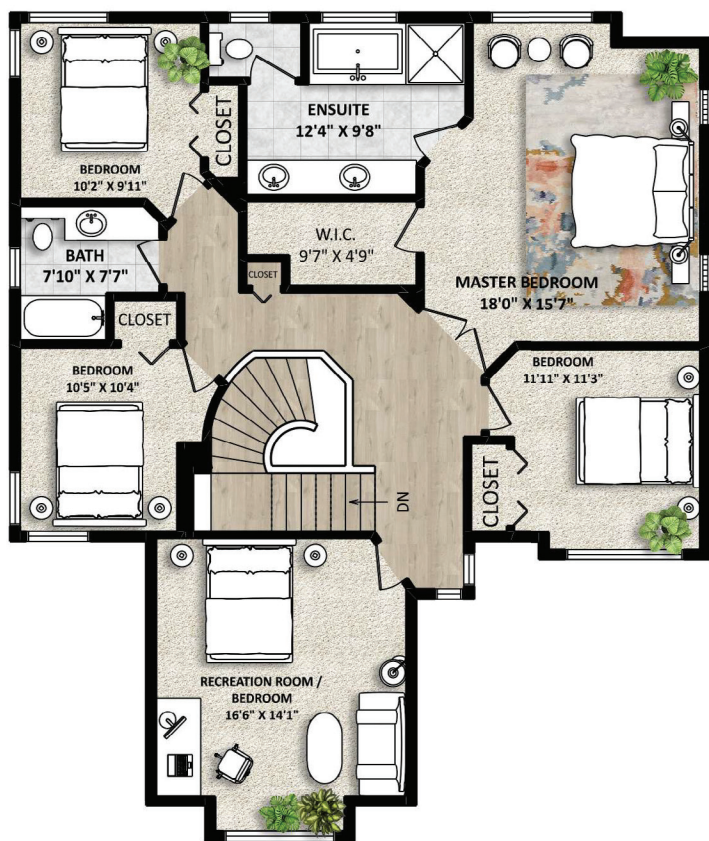
OTHER AREA(S)

GARAGE: 382 SQ.FT.

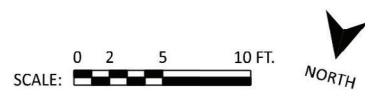
DECK: 80 SQ.FT.\*



MAIN FLOOR: 1445 SQ.FT.



UPPER FLOOR: 1421 SQ.FT.



3060 WREN PLACE • COQUITLAM



Paree Zahedi

Realstate Agent

604-725-4533

info@pareezahedi.ca • www.pareezahedi.ca

This version of the floor plan is for marketing purposes only.

Please contact Paree Zahedi, 604-725-4533, for specifications.

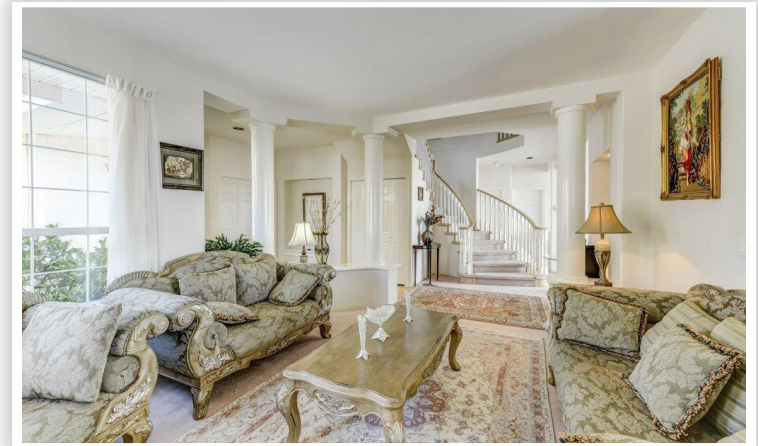
This communication is not intended to cause or induce breach of an existing agency agreement.



Team 3000 Realty Ltd.

303-1338 West Broadway, Vancouver, BC V6H 1H2

TEAM 3000 REALTY LTD



### Details



6

Property Style: 2 Storey w/Bsmt



4

Type of Dwelling: Detached

Year built: 1997

Size: 4,028 sq.ft.

Lot: 7,556 sq.ft.

Taxes: \$6,500.00

### Description

Located in a posh neighbourhood Westwood Plateau. This house with a panoramic view of Mt Baker and south west Coquitlam comes with 4 bdrms and a large games room on the second floor. Large family room, living room, dining room, kitchen with eating area, and office on the main floor. The lower floor has a three bedroom suite, Sits on almost 7600 SF corner and very private lot with no neighbour in the back. It is located in the very quiet cul de sac, beautifully maintained back yard is a heaven for kids to enjoy. This Paklane Home is close to school, playground, easy access to the public transportation. This is a heaven to raise your family with maximum privacy and view to enjoy from every room.

