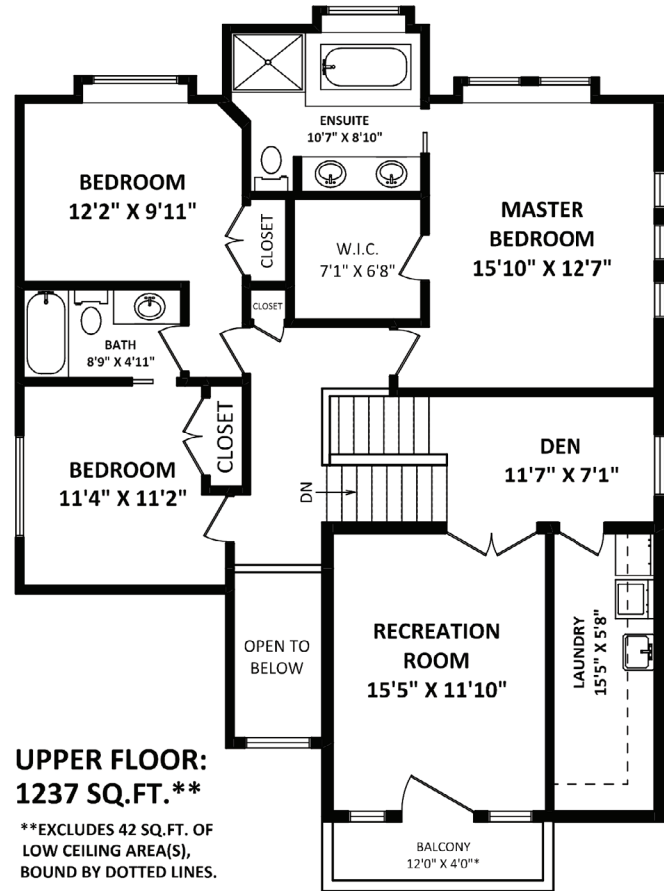


19266 Streamstone Walk • Pitt Meadows

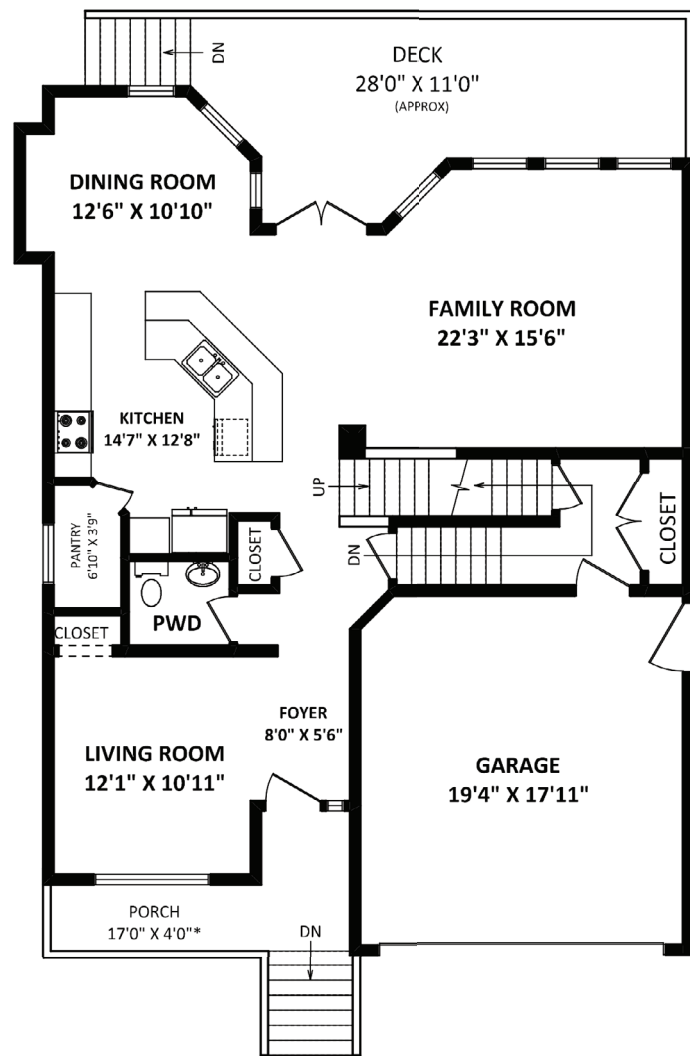
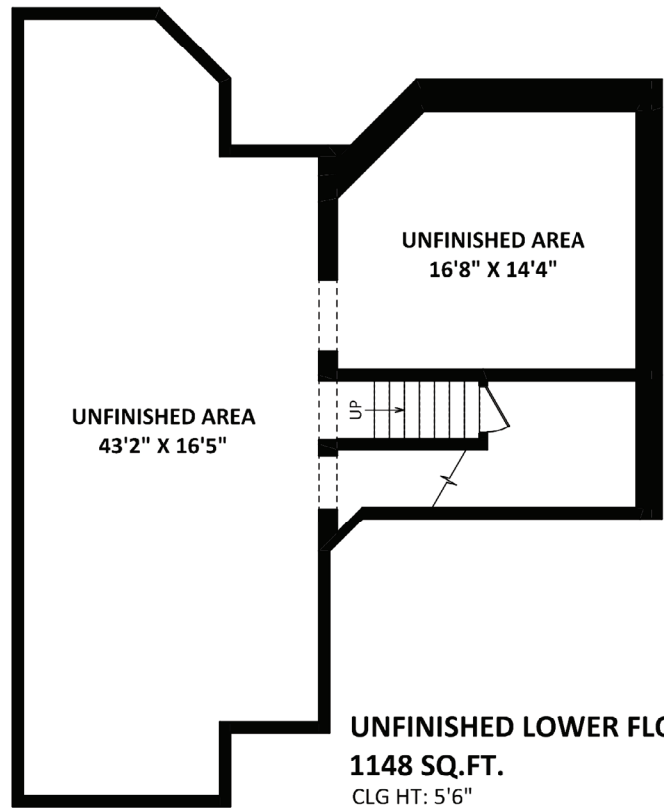


DAVID YIPP
 MACDONALD REALTY
 604-724-7971
 www.davidyipp.com



TOTAL FLOOR AREA: 3587 SQ.FT.**
 FINISHED AREA(S): 2397 SQ.FT.
 UNFINISHED AREA(S): 1148 SQ.FT.
 LOW CEILING HEIGHT AREA(S): 42 SQ.FT.

OTHER AREA(S)
 GARAGE: 371 SQ.FT.
 DECK: 250 SQ.FT.*
 PORCH: 90 SQ.FT.*
 BALCONY: 50 SQ.FT.*



MAIN FLOOR: 1160 SQ.FT.



19266 Streamstone Walk • Pitt Meadows

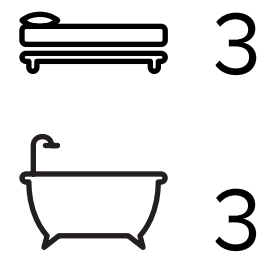
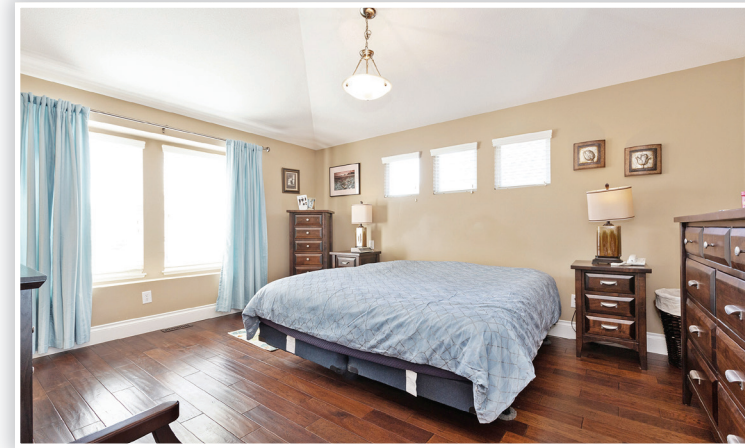


Please contact David Yipp, 604-724-7971, for specifications.

This communication is not intended to cause or induce breach of an existing agency agreement.



Macdonald Realty Delta Branch
 201-7313 120th Street, Delta, BC V4C 6P5
 604-590-2444



Details

Property Style:	2 Storey
Type of Dwelling:	House
Year Built:	2008
Living Area:	2,397 sq. ft.
Lot:	3,901 sq. ft.
Frontage:	44.13 ft.
Taxes:	\$5,396.39

Description

Executive family home in Fieldstone Park. Exclusive community of craftsman style homes nestled in a quiet cul-de-sac. Open concept with hickory H/W flooring thru out. Gourmet sized kitchen with large eating bar, granite counters, large pantry with glass door, great rm. concept with 9 ceiling. Mid level has built-in office desk w/window and large media/flex rm. with balcony (could also be a bdrm.) Impressive master bedrm. & lg. ensuite. South exposure gives you lots of natural sun & light from lg. windows & vaulted ceiling. 25X8 deck for summer entertaining. Huge, high crawl space partly drywalled for play area or extra storage. Close to West Coast Express, Golden Ears bridge, shopping & schools. A very nicely kept home. You wont be bored working at home in this living space!

