

TOTAL FINISHED AREA: 1018 SQ.FT.

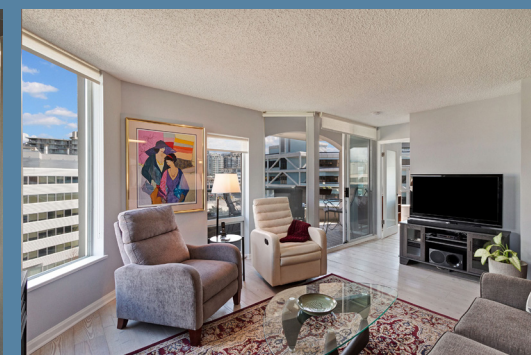
OTHER AREA(S)

DECK: 94 SQ.FT.*



Welcome To

802 168 Chadwick Ct, North Vancouver



Judy Anderson

(604) 315-4066
judyanderson@shaw.ca
www.judyanderson.com



RE/MAX CREST REALTY

101 - 2609 WESTVIEW DRIVE NORTH VANCOUVER, BC V7N 4M2

This version of the floorplan is for marketing purposes only. Please contact Judy Anderson for specifications

This communication is not intended to cause or induce breach of an existing agency agreement





802 168 Chadwick Ct, North Vancouver

A Premier CONCRETE building at North Vancouver's waterfront. Situated between Lonsdale Quay, the Seabus Terminal, Waterfront Park and the Spirit Trail, its location, location, location. This bright and airy updated 1000 sqft suite offers 2 bedrooms, 2 bathrooms and ever changing mountain and westerly views to the bridge. Windows on all 3 sides for all day light and large balcony for outdoor relaxing. SS appliances, updated kitchen with wall oven, 2 renovated bathrooms, each with walk in showers. Building fully re-piped in 2014, all common areas tastefully upgraded, well equipped recreation area, a library and amenity room available for gatherings. 1 parking(close to elevator), 1 locker & healthy contingency. Put away the car, stroll to everything; shopping, restaurants, transportation.

Year Built	1990
Style	Inside unit
Bedrooms	2
Bathrooms	2
Size	1018 ft ²
Type	Condo

For more photos and a virtual tour, please visit: www.judyanderson.com



RE/MAX CREST REALTY
 101 - 2609 WESTVIEW DRIVE
 NORTH VANCOUVER BC V7N 4M2