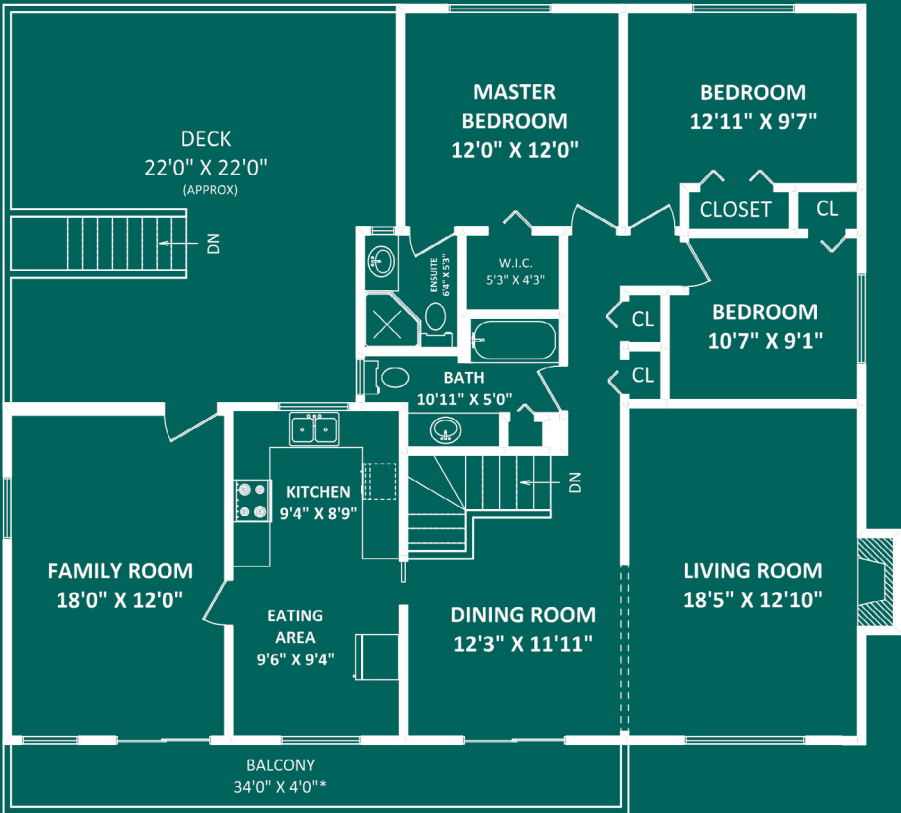
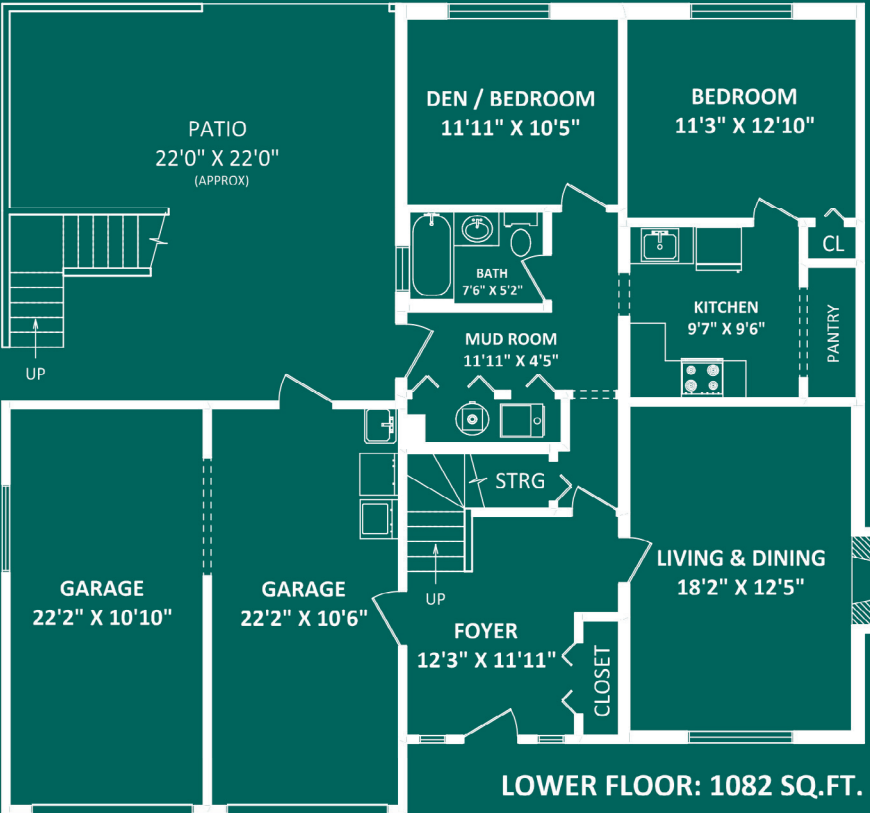


TOTAL FINISHED AREA: 2606 SQ.FT.

OTHER AREA(S)
GARAGES: 508 SQ.FT.
DECK: 465 SQ.FT.*
PATIO: 490 SQ.FT.*
BALCONY: 135 SQ.FT.*



MAIN FLOOR: 1524 SQ.FT.



LOWER FLOOR: 1082 SQ.FT.



This version of the floorplan is for marketing purposes only.
Please contact Dan or Sue for specifications.

This publication is not intended to cause or induce breach of an existing agency agreement.



Welcome To
6245 180A Street, Cloverdale
Great Location!



Lower Mainland
Living



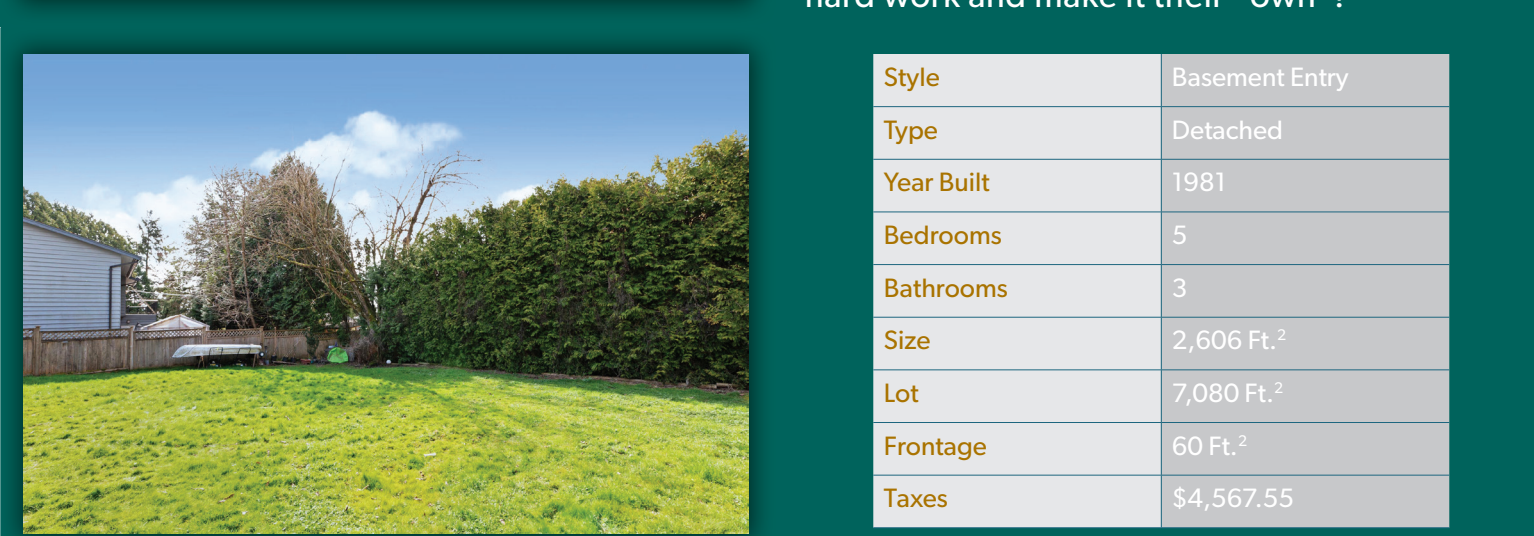
Visit lowermainlandliving.com

True Local Realtors



Dan Bennett
ASSOCIATE BROKER
604.250.5227

Sue Bennett
REPRESENTATIVE
604.250.4424



6245 180A Street, Cloverdale

Great location, close to schools and shopping. Good sized yard for the growing family with family room off kitchen leading to an entertaining size (22 X 22) deck, overlooking the backyard. If you want room for the older kids or Mom and Dad, then the bsmt has an accomodating layout.. Double garage, plus good sized driveway for parking. This home is perfect for the couple that wants to put in some hard work and make it their "own"!

Style	Basement Entry
Type	Detached
Year Built	1981
Bedrooms	5
Bathrooms	3
Size	2,606 Ft. ²
Lot	7,080 Ft. ²
Frontage	60 Ft. ²
Taxes	\$4,567.55