

202 - 338 Ward Street, New Westminster



DAVID YIPP  
MACDONALD REALTY  
604-724-7971  
www.davidyipp.com



Welcome to...

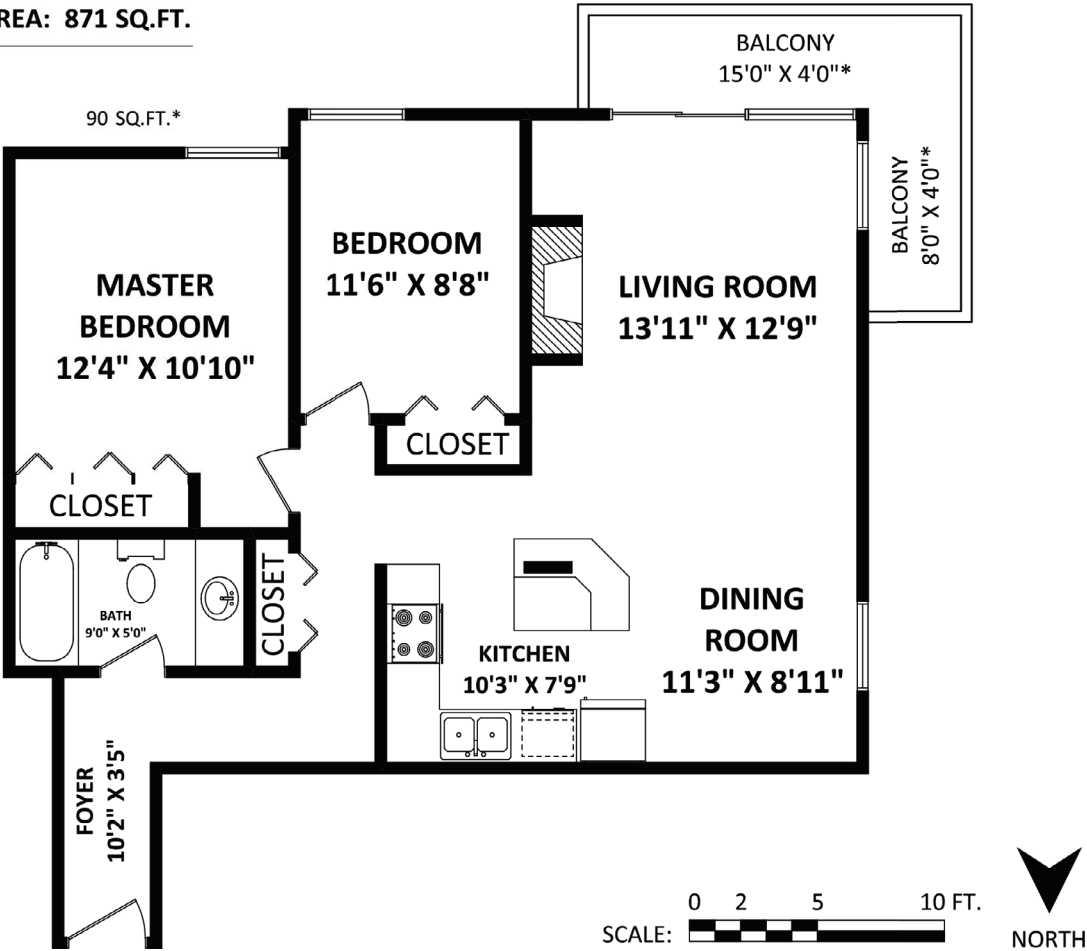


202 - 338 Ward Street, New Westminster

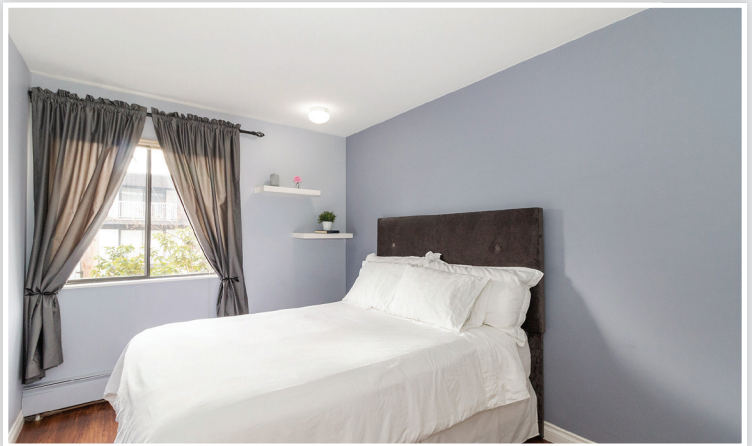




TOTAL FINISHED AREA: 871 SQ.FT.

OTHER AREA(S)  
BALCONIES:







 2		<b>Details</b>		<b>Description</b>  Don't miss out on this wonderful bright & spacious 2 bedrm. corner end unit in popular Sapperton! Well kept and cared for, its in move-in condition and features laminate & tiled floors, gas fireplace, crown mouldings, heat-hot water & gas is included in maintenance. The renovated kitchen is open & has a eating bar plus an updated bathroom. Wrap around balcony to enjoy a BBQ and the southwest exposure. Close to Royal Columbian hospital, shopping, restaurants, pubs and Sapperton station. Quick possession possible.
 1		Property Style:	Corner-Upper Unit	
		Type of Dwelling:	Condo	
		Year Built:	1975	
		Living Area:	872 sq. ft.	
		Taxes:	\$1,678.36	
		Maintenance Fee:	\$476.13	

