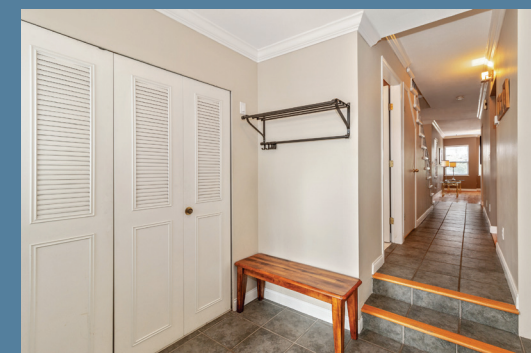


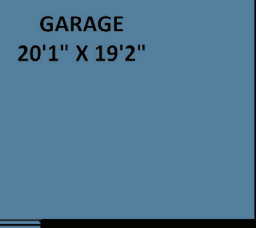
# Welcome To

## 337 East 5<sup>th</sup> Street, North Vancouver



MAIN FLOOR: 982 SQ.FT.

UPPER FLOOR: 778 SQ.FT.



SCALE: 0 2 5 10 FT.



DISCLAIMERS:  
1. MEASUREMENTS ARE FOR PROMOTIONAL USE ONLY & ARE NOT INTENDED FOR CONSTRUCTION USE. ROOM DIMENSIONS ARE APPROXIMATE.  
2. FINISHED AREAS ARE ENCLOSED AREAS IN A HOUSE THAT ARE SUITABLE FOR YEAR-ROUND USE. FINISHING WALLS, FLOORS, AND CEILING MUST  
BE SUITABLE TO THE REST OF THE HOUSE. (AREA 215 SQ. FT.)  
3. FOR BATH AND OTHER, SQUARE FOOTAGE OF EACH LEVEL IS CALCULATED TO THE EXTERIOR FINISHED SURFACE OF THE CURB OF WALLS.  
4. THIS FLOOR PLAN AND ONLY BE REPRODUCED WITH PERMISSION OF THE REALTOR OR THIS FLOOR PLAN.  
5. ANY MEASUREMENTS WITH AN ASTERISK (\*) OR (APPROX) ARE APPROXIMATE AND FOR ILLUSTRATION PURPOSES ONLY AND ARE NOT TO BE USED.

[FEBRUARY 25, 2021]  
**SEEVIRTUAL**  
MARKETING & PHOTOGRAPHY  
TEL: 604-575-1244  
www.seevirtual360.com

## Judy Anderson

(604) 315-4066  
judyanderson@shaw.ca  
www.judyanderson.com

### RE/MAX CREST REALTY

101 - 2609 WESTVIEW DRIVE NORTH VANCOUVER, BC V7N 4M2



This version of the floorplan is for marketing purposes only.  
Please contact Judy Anderson for specifications

This communication is not intended to cause or induce breach of an existing agency agreement







## 337 East 5<sup>th</sup> Street, North Vancouver

Come be part of LoLo's vibrant lifestyle and enjoy this very well maintained 1,760 sq ft, 3 bedroom up 1/2 duplex with sunny south side backyard exposure. Move-in ready with updated kitchen, granite counters, hardwood floors on main, gas fireplace, 2016 high efficiency furnace and separate storage room up that could become an at home office plus storage in the crawl space. City views off master bedroom deck for morning coffee and alfresco dining on your large back patio. All of this and a hard to find double garage complete the package. Walk to everything; excellent restaurants and a variety of shops near by. Shown by appointment only.



|            |          |
|------------|----------|
| Year Built | 1994     |
| Style      | ½ Duplex |
| Bedrooms   | 3        |
| Bathrooms  | 3        |
| Size       | 1760 ft² |
| Frontage   | 25 ft    |
| Type       | 2 Level  |

For more photos and a virtual tour, please visit: [www.judyanderson.com](http://www.judyanderson.com)

**RE/MAX**  
CREST REALTY

**RE/MAX CREST REALTY**  
101 - 2609 WESTVIEW DRIVE  
NORTH VANCOUVER BC V7N 4M2